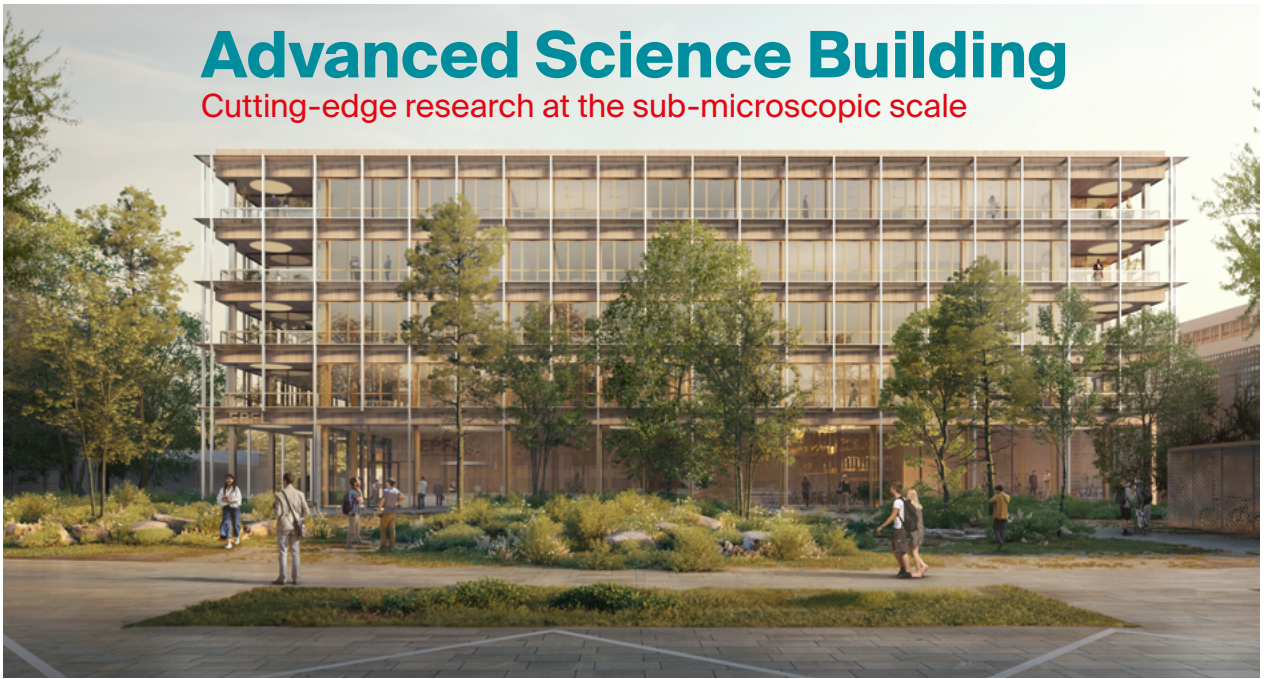


# Advanced Science Building

Cutting-edge research at the sub-microscopic scale

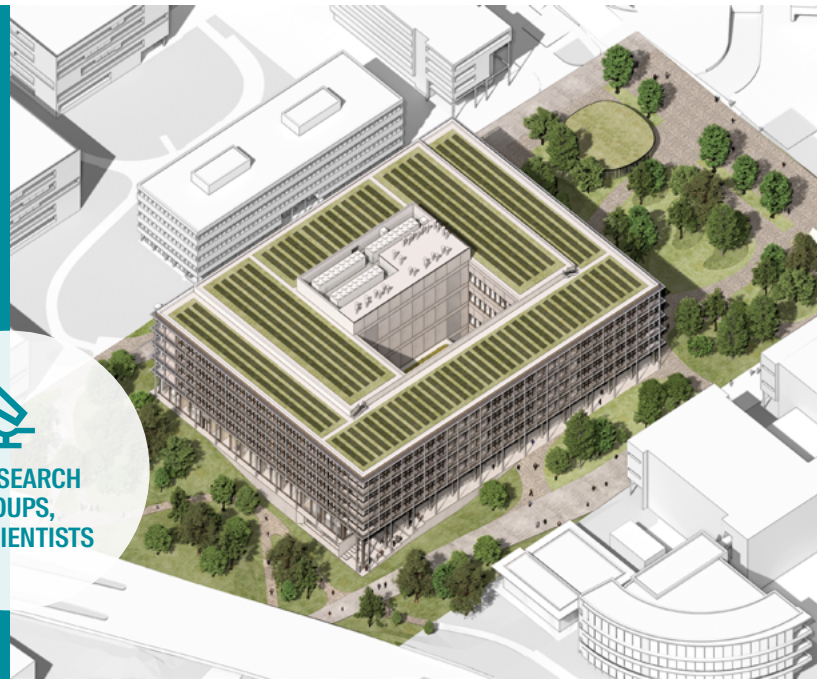


École polytechnique fédérale de Lausanne

Today's research instruments are so sensitive that they must be completely isolated from the outside world.

That's why we've decided to construct a new Advanced Science Building on our Lausanne campus that will provide full isolation from all types of disturbances.

The central structure will be mounted on springs, thus minimizing fluctuations in temperature, humidity, noise, vibration and electromagnetic fields. The architects behind this sophisticated design are KAAAN Architecten and Celnikier & Grabli Architectes. Construction will begin in 2026 and should be completed in 2029.



  
**26 RESEARCH GROUPS,  
500 SCIENTISTS**



$\mu\text{m}$   
A HUMAN HAIR IS JUST 50-100 MICRONS THICK



The new building will house research instruments that can tolerate vibrations of up to one hundredth of a micron per second. This key facility will meet the needs of scientists from cross-disciplinary research groups, especially in the fields of quantum mechanics, physics, chemistry and engineering.



  
ACCELERATING THE  
TRANSITION FROM  
BASIC TO APPLIED  
RESEARCH

A forward-looking commitment:

- The capacity to accommodate 26 research groups
- Exemplary sustainable construction approach, using recycled, sustainable materials – including a significant amount of wood – as much as possible
- Enhanced energy efficiency, yet fully compliant with strict technical specifications



  
RECYCLED,  
SUSTAINABLE  
MATERIALS



The Advanced Science Building will be critical to future scientific breakthroughs

If you'd like to contribute to this state-of-the-art research building, please contact our philanthropy team today:

**Catherine Janssens**  
HEAD OF DONOR ENGAGEMENT  
[catherine.janssens@epfl.ch](mailto:catherine.janssens@epfl.ch)

SCAN THE QR CODE TO LEARN MORE:

