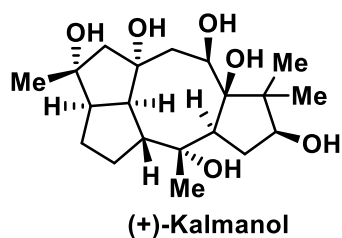
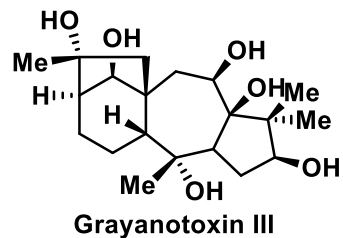


Total Synthesis of (+)-Kalmanol

Ma, T.; Ma, Y.; Li, B.; Jia, Y. *Angew. Chem. Int. Ed.* **2024**, *63*, e202407215



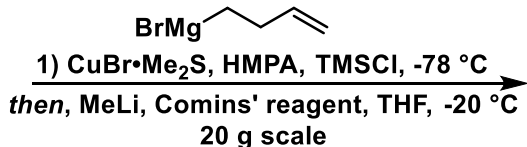
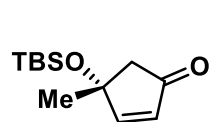
- Analgesic
- Cardiotoxic

- 5/8/5/5 tetracyclic core
- 11 contiguous stereocenters

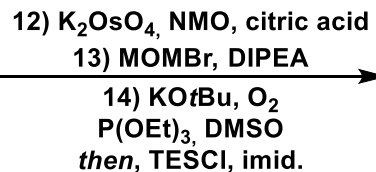
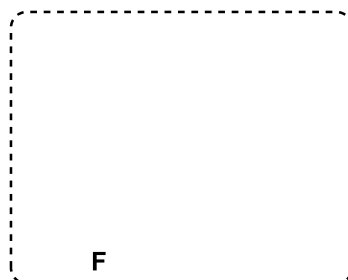
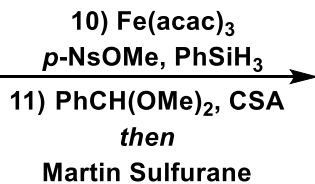
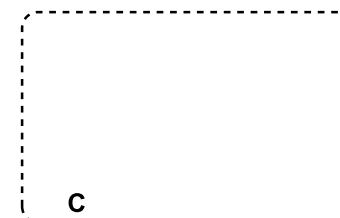
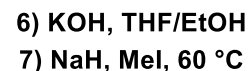
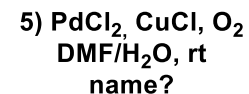
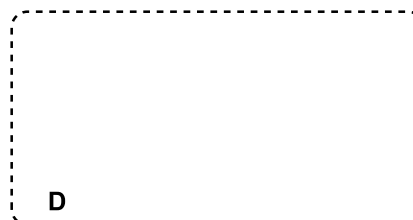
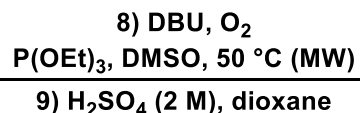
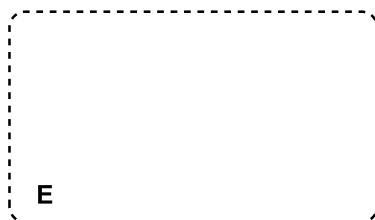
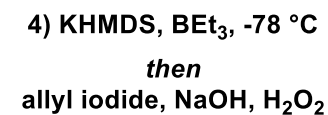
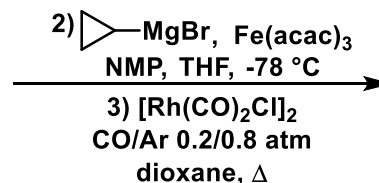
First isolated from
Kalmia angustifolia L. (1989)
(Sheep Laurel)



https://commons.wikimedia.org/wiki/File:Kalmia_angustifolia_015.jpg

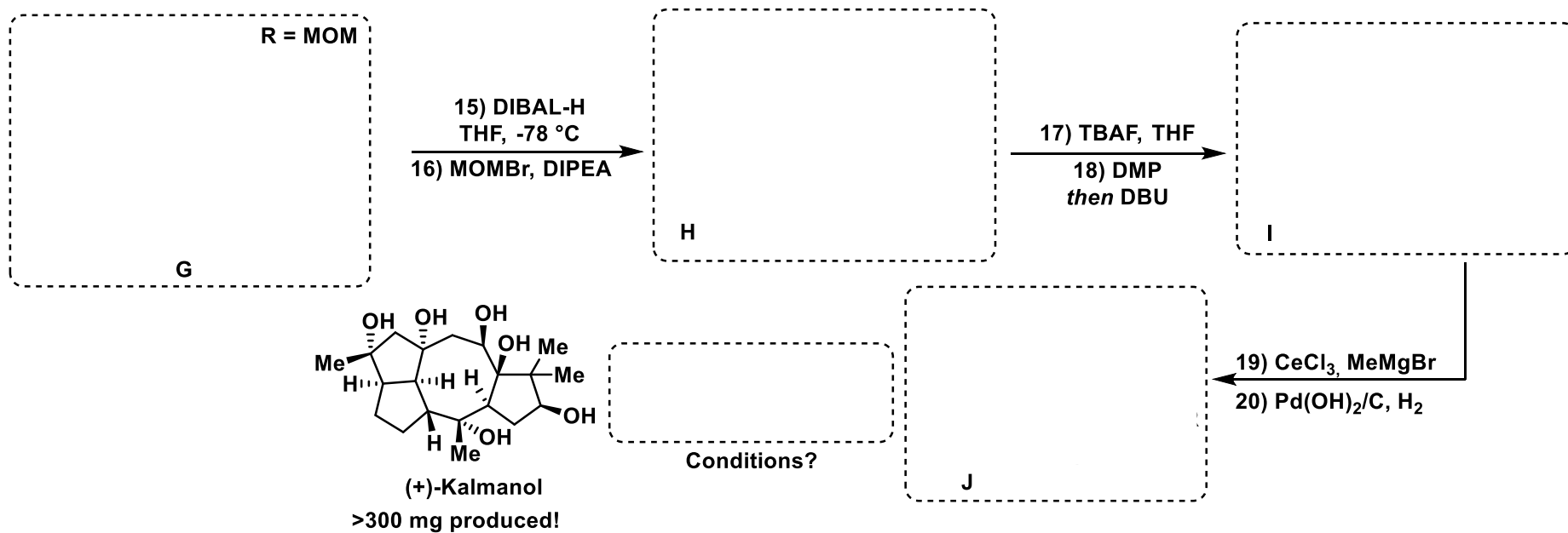


Provide retrosynthesis



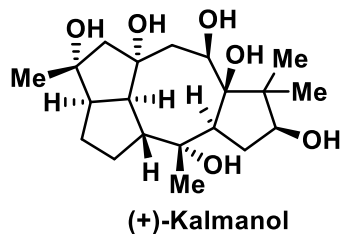
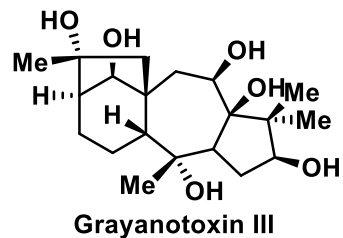
Total Synthesis of (+)-Kalmanol

Ma, T.; Ma, Y.; Li, B.; Jia, Y. *Angew. Chem. Int. Ed.* **2024**, 63, e202407215



Total Synthesis of (+)-Kalmanol

Ma, T.; Ma, Y.; Li, B.; Jia, Y. *Angew. Chem. Int. Ed.* **2024**, *63*, e202407215



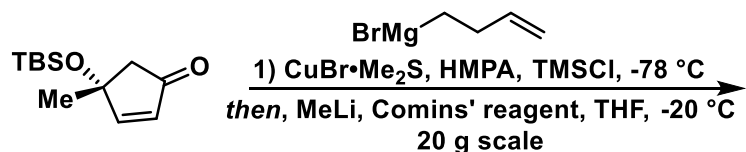
- Analgesic
- Cardiotoxic

- 5/8/5/5 tetracyclic core
- 11 contiguous stereocenters

First isolated from
Kalmia angustifolia L. (1989)
(Sheep Laurel)

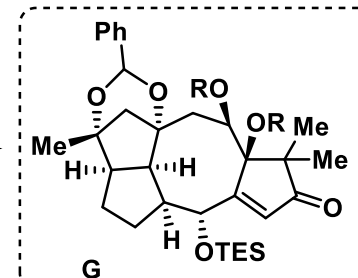
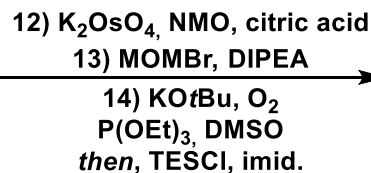
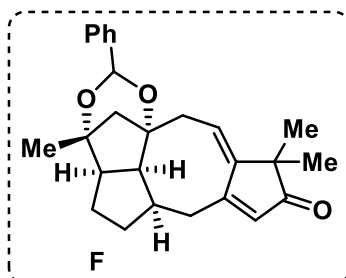
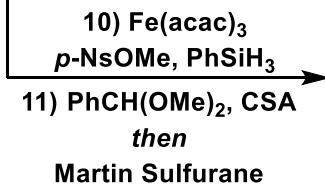
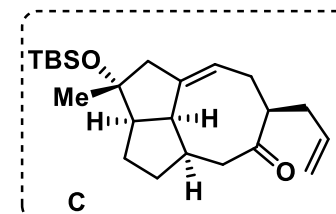
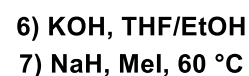
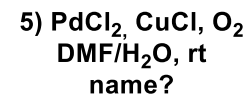
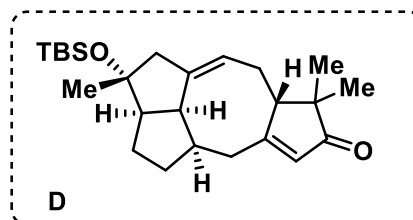
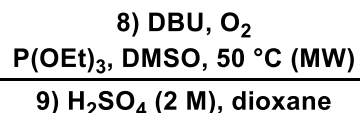
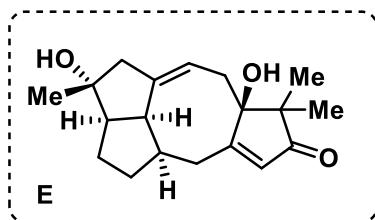
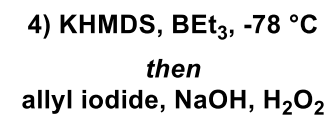
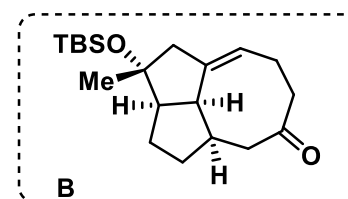
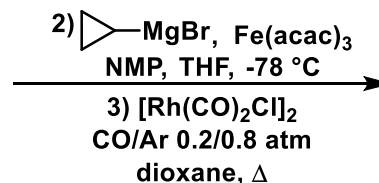
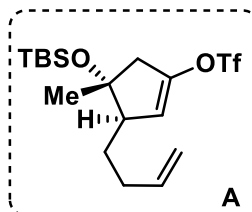


https://commons.wikimedia.org/wiki/File:Kalmia_angustifolia_015.jpg



Provide retrosynthesis

Science, **2016**, *352*, 1078-1082



Total Synthesis of (+)-Kalmanol

Ma, T.; Ma, Y.; Li, B.; Jia, Y. *Angew. Chem. Int. Ed.* **2024**, *63*, e202407215

