

MATHICSE Technical Report

Nr. 42.2014
October 2014



A reduced basis localized orthogonal decomposition

Assyr Abdulle, Patrick Henning

A reduced basis localized orthogonal decomposition

Assyr Abdulle¹ and Patrick Henning²

Abstract

In this work we combine the framework of the Reduced Basis method (RB) with the framework of the Localized Orthogonal Decomposition (LOD) in order to solve parametrized elliptic multiscale problems. The idea of the LOD is to split a high dimensional Finite Element space into a low dimensional space with comparably good approximation properties and a remainder space with negligible information. The low dimensional space is spanned by locally supported basis functions associated with the node of a coarse mesh obtained by solving decoupled local problems. However, for parameter dependent multiscale problems, the local basis have to be computed repeatedly for each choice of the parameter. To overcome this issue, we propose an RB approach to compute in an “offline” stage LOD for suitable representative parameters. The online solution of the multiscale problems can then be obtained in a coarse space (thanks to the LOD decomposition) and for an arbitrary value of the parameters (thanks to a suitable “interpolation” of the selected RB). The online RB-LOD has a basis with local support and leads to sparse systems. Applications of the strategy to both linear and nonlinear problems are given.

Keywords finite element, reduced basis, parameter dependent PDE, numerical homogenization, multiscale method

AMS subject classifications 65N30, 65M60, 74Q05, 74Q15

1 Introduction

In this paper, we consider parametrized linear elliptic multiscale problems, i.e. we are interested in finding the parameter-dependent solution $u^\varepsilon(\cdot; \cdot)$ of an equation

$$\begin{aligned} -\nabla \cdot (a^\varepsilon(x; \boldsymbol{\mu}) \nabla u^\varepsilon(x; \boldsymbol{\mu})) &= f(x; \boldsymbol{\mu}) && \text{in } \Omega, \\ u^\varepsilon(x; \boldsymbol{\mu}) &= 0 && \text{on } \partial\Omega. \end{aligned} \tag{1}$$

Here, $\boldsymbol{\mu} = (\mu_1, \dots, \mu_P)$ denotes a parameter vector. It is an element of a multidimensional parameter set $\mathcal{D} \subset \mathbb{R}^P$, where $P \in \mathbb{N}$. The parameter-dependent coefficient matrix $a^\varepsilon(x; \boldsymbol{\mu})$ is assumed to be a *multiscale coefficient*. It exhibits a continuum of different scales, where the finest scale is very small compared to the size of computational domain Ω . In particular $a^\varepsilon(x; \boldsymbol{\mu})$ shows very fast variations that need to be resolved with an extremely fine computational grid. The order of the finest scale in our problem is characterized by the abstract

¹ANMC, Section de Mathématiques, École polytechnique fédérale de Lausanne, 1015 Lausanne, Switzerland, Assyr.Abdulle@epfl.ch

²Institut für Numerische und Angewandte Mathematik, Westfälische Wilhelms-Universität Münster, Einsteinstr. 62, D-48149 Münster, Germany, Patrick.Henning@wwu.de

quantity $0 < \varepsilon \ll 1$. However, we do not need to assign a specific value to ε . Due to the requirement that all scales of $a^\varepsilon(\cdot; \boldsymbol{\mu})$ need to be resolved with a computational grid, the problem cannot be tackled by standard methods (such as classical finite element methods) since the computational complexity would become prohibitively large. Hence we are interested in finding a way to decrease the computational complexity and to distribute the load on several CPUs by introducing fully decoupled local subproblems. Furthermore, we want to avoid recomputing local subproblems for every new parameter $\boldsymbol{\mu}$. We are thus looking for (a small number of) representative parameters for which accurate local problems and basis are computed and that allow to fast computations for every new parameter $\boldsymbol{\mu}$.

Parameter-dependent multiscale problems can for instance arise in applications from material sciences, geophysics or hydrology. More specific examples are the prediction of global strain or elasticity properties of fiber reinforced composite materials, where the parameters can describe different constellations for the microscopic fibers that are embedded in the main material (e.g. their form or density). Another example is the flow in porous media where different permeability configurations can be parametrized. For such cases the coefficient $a^\varepsilon(\cdot; \boldsymbol{\mu})$ and the source term $f(\cdot; \boldsymbol{\mu})$ can both depend on a large number of parameters $\boldsymbol{\mu}$. It is therefore of strong interest to construct methods that combine the features of a multiscale method (to treat the rapid variations in the coefficients) with a reduced basis approach (to treat the dependency on a large set of parameters).

There are numerous different methods that are designed to treat the classical (parameter-free) multiscale problems (cf. [1, 2, 10, 9, 15, 19, 25, 23, 24, 32, 35, 34, 33, 41, 40, 45, 46] and the references therein). In this paper we focus on the localized orthogonal decomposition (LOD) introduced in [41]. To handle parameter dependency in an efficient way we will build on the reduced basis (RB) approach (cf. [26, 39, 47, 48, 49, 52]). The reduced basis method is a model order reduction technique that we describe at the end of this section when we describe the idea of the reduced basis localized orthogonal decomposition approach (RB-LOD).

Despite the large number of results on multiscale methods and reduced basis approaches there are only few works which combine both features. In the context of periodic homogenization this was first studied by Boyaval [13, 14] and extended for more general numerical homogenization problems in [3, 4, 5, 6]), where the *reduced basis finite element heterogeneous multiscale method* (RB-FE-HMM) has been introduced. The RB-FE-HMM was originally designed to reduce the computational complexity of the classical Heterogeneous Multiscale Method [19] by interpreting the location of a cell problem as a parameter (which is equivalent to the dependency on the coarse variable). With that strategy precomputed solutions from other cell problems can be used to construct reduced basis solution spaces for new cell problems. This method also generalizes to additional parameter dependencies such as in (1). A similar approach which also fits into the HMM framework was presented in [43], where the focus is on optimization problems that are constrained by a parameterized multiscale problem. A combination of the RB framework with the multiscale finite element method (MsFEM, see [33]) was proposed by Nguyen in [42], model reduction techniques for the MsFEM have also been developed in [20]. Finally, we mention the approach of the localized reduced basis multiscale method (LRBMS) proposed in [38, 8] and further developed in [44, 37]. The main idea of the method is to localize global solutions (that were determined for a set of parameters) to the elements of a coarse grid. The localization can be simply obtained by truncation and hence the localized solutions can be used as basis functions in a global discontinuous Galerkin approach.

In this paper we introduce the reduced basis local orthogonal decomposition (RB-LOD). We briefly summarize the main ideas. Consider a coarse triangulation \mathcal{T}_H and a corresponding set of coarse nodes \mathcal{N}_H . For any fixed (i.e. parameter independent) coefficient a^ε the LOD

is designed to construct a set of (locally supported) multiscale basis functions Φ_z^{MS} (each of them associated with a single coarse node $z \in \mathcal{N}_H$) so that the discrete space that is spanned by these basis functions yields the classical convergence rates in H . The functions Φ_z^{MS} are obtained from the solution of a local finite element problem (in a local space that resolves the microstructure). The coarse triangulation \mathcal{T}_H does not need to resolve the microstructure and can hence be low dimensional. However if the coefficient $a^\varepsilon(\cdot; \boldsymbol{\mu})$ is parameter-dependent then $\Phi_z^{\text{MS}}(\boldsymbol{\mu})$ is parameter-dependent as well and needs to be recomputed again for any new parameter. To overcome this drawback we apply the reduced basis method together with a Greedy search algorithm to identify a set of parameters for which we compute Φ_z^{MS} . These solutions can be used to construct affine (reduced basis) spaces V_z^{RB} , for each node $z \in \mathcal{N}_H$.

The computation of the spaces V_z^{RB} takes place in an offline phase (i.e. it is a preprocessing step). The functions in V_z^{RB} are only locally supported in a small patch around the node z . Once constructed, these reduced basis (multiscale) spaces can then be used in an online phase to obtain a solution of the problem for any new parameter in a coarse reduced RB-LOD space. The strategy proposed here allows to construct localized reduced basis, since different parameter sets can be used locally. Furthermore, we do not need to assume that there exists an affine decomposition for $f(\cdot; \boldsymbol{\mu})$.

We now introduce the assumptions that we use throughout the paper. The physical domain $\Omega \subset \mathbb{R}^d$, for $d = 1, 2, 3$ will be assumed to be a bounded Lipschitz domain with a piecewise polygonal boundary.

In order to guarantee well-posedness of the problem we assume the following.

(A1) for every parameter $\boldsymbol{\mu} \in \mathcal{D}$ we have $f(\cdot; \boldsymbol{\mu}) \in L^2(\Omega)$; furthermore there exists a constant $C \in \mathbb{R}$ such that $\|f(\cdot; \boldsymbol{\mu})\|_{L^2(\Omega)} \leq C$ for all $\boldsymbol{\mu} \in \mathcal{D}$;

(A2) the matrix-valued parameter-dependent functions $a^\varepsilon(\cdot; \boldsymbol{\mu}) \in [L^\infty(\Omega)]_{\text{sym}}^{d \times d}$ have uniform spectral bounds, i.e. there exist real numbers $0 < \alpha \leq \beta$ such that for all $\boldsymbol{\mu} \in \mathcal{D}$ and almost every $x \in \Omega$

$$\forall \xi \in \mathbb{R}^d : \quad \alpha |\xi|^2 \leq a^\varepsilon(x; \boldsymbol{\mu}) \xi \cdot \xi \leq \beta |\xi|^2.$$

To make sure that the reduced-basis method can be efficiently implemented, we require another assumption.

(A3) The parameter set \mathcal{D} is compact in \mathbb{R}^P . Furthermore, there exists a finite index set $\mathcal{Q} \subset \mathbb{N}$, measurable parameter-independent functions $a_q^\varepsilon \in L^\infty(\Omega)$ (for $q \in \mathcal{Q}$) and measurable functions $\Theta_q : \mathcal{D} \rightarrow \mathbb{R}$ (for $q \in \mathcal{Q}$) such that $a^\varepsilon(x; \boldsymbol{\mu})$ has the affine representation

$$a^\varepsilon(x; \boldsymbol{\mu}) = \sum_{q \in \mathcal{Q}} \Theta_q(\boldsymbol{\mu}) a_q^\varepsilon(x).$$

We notice that if (A3) does not hold, reduced-basis techniques can still be used by relying on the so-called empirical interpolation methods that allows to approximate a tensor $a^\varepsilon(x; \boldsymbol{\mu})$ by a decomposition similar to (A3) [11]. Such techniques could also be used in the present paper but as this is not the main focus of the paper we rather assume the decomposition (A3) to be already at hand.

Under assumptions (A1)-(A2), for any given parameter $\boldsymbol{\mu} \in \mathcal{D}$ there exists a unique weak solution $u^\varepsilon(\cdot; \boldsymbol{\mu}) \in H_0^1(\Omega)$ of (1) with

$$(\hat{a}^\varepsilon(\cdot; \boldsymbol{\mu}) \nabla u^\varepsilon(\cdot; \boldsymbol{\mu}), \nabla v)_{L^2(\Omega)} = (f(\cdot; \boldsymbol{\mu}), v)_{L^2(\Omega)} \quad \text{for all } v \in H_0^1(\Omega). \quad (2)$$

For simplicity we use the notation

$$b^\varepsilon(v, w; \boldsymbol{\mu}) := (a^\varepsilon(\cdot; \boldsymbol{\mu})\nabla v, \nabla w)_{L^2(\Omega)} \quad \text{for } v, w \in H_0^1(\Omega) \quad (3)$$

and, furthermore, for every subdomain $\omega \subset \Omega$ we denote the local energy norm by

$$\|v\|_{\mathcal{E}(\omega)}^\boldsymbol{\mu} := \|a^\varepsilon(\cdot; \boldsymbol{\mu})^{1/2}\nabla v\|_{L^2(\omega)} \quad \text{for } v \in H^1(\omega).$$

The paper is organized as follows: In Section 2 we recall the definition and the main features of the classical Localized Orthogonal Decomposition. In Section 3 we combine this approach with the Reduced Basis method. In particular we present algorithms which give a step-by-step procedure for how to implement the combined method. In Section 4 we state the results of two numerical experiments. The first experiment involves a parametrized linear problem, whereas the second experiment demonstrates the applicability of the method to nonlinear problems.

2 Localized Orthogonal Decomposition

We start by introducing a general space discretization of the problem (1), that is based on the framework of the Localized Orthogonal Decomposition (LOD, cf. [7, 41, 27, 31, 30, 29]). Galerkin approximations in standard finite element spaces are known to suffer from pre asymptotic effects for multiscale problems. More precisely, if u_H denotes the FEM Galerkin approximation in a P1 FEM space V_H , the optimal convergence order (under the assumption of sufficient regularity) will be $\mathcal{O}(C(\varepsilon)H)$, where $C(\varepsilon)$ depends on the speed of the oscillations (comparable to the size of the derivative of a^ε - if it exists, e.g. $C(\varepsilon) = \mathcal{O}(1/\varepsilon)$ in periodic homogenization). Hence, H must be smaller than $C(\varepsilon)$ so that the method enters the classical asymptotic regime of linear convergence in H . The idea of the LOD method is to construct subspaces of $H_0^1(\Omega)$, in which we obtain convergence without pre asymptotic effects, i.e. the convergence rates do not depend on $C(\varepsilon)$. Consequently, low dimensional subspaces can be used to obtain highly accurate results. Below we describe the construction of the LOD spaces that we denote by $V_{H,k}^{\text{MS}}$.

To discretize the problem, we require two families of computational grids on Ω : a family of fine meshes \mathcal{T}_h and a family of coarse mesh \mathcal{T}_H . Both families are assumed to consist of conforming and shape regular simplicial elements and we denote by H or h the maximum diameter of an element of \mathcal{T}_H or \mathcal{T}_h , respectively. We furthermore assume that \mathcal{T}_h originates from a regular mesh refinement of \mathcal{T}_H . The size of the macro mesh \mathcal{T}_H is not constrained by the microstructure of the solution and linear convergence towards $u^\varepsilon(\cdot; \boldsymbol{\mu})$ will be obtained in the macro mesh size H . The mesh \mathcal{T}_h is assumed to be fine enough to resolve the rapid variations of the coefficients a_q^ε for $q \in \mathcal{Q}$. For $\mathcal{T} = \mathcal{T}_H, \mathcal{T}_h$ and ω a subset of coarse or fine elements we denote by $P_1(\omega, \mathcal{T})$ the space of continuous functions on ω that are linear in each $K \in \mathcal{T}$.

We then define $V_H := P_1(\Omega, \mathcal{T}_H) \cap H_0^1(\Omega)$ and the space V_h is defined accordingly. The set of interior coarse nodes (interior Lagrange points) of \mathcal{T}_H will be denoted by \mathcal{N}_H . Furthermore, we denote $N := |\mathcal{N}_H|$ the number of nodes. For a given node $z \in \mathcal{N}_H$ the corresponding coarse nodal basis function is $\Phi_z \in V_H$ (i.e. $\Phi_z(z) = 1$ and $\Phi_z(y) = 0$ for all $y \in \mathcal{N}_H \setminus \{z\}$). We set $\omega_z := \text{supp}(\Phi_z)$ and by N_z we denote the number of coarse elements in ω_z , i.e. $N_z := |\{K \in \mathcal{T}_H \mid K \subset \omega_z\}|$.

In the next step, we define a "remainder space" or "detailed space" W_h that contains functions with a small L^2 -norm. To define this space we make use of the following Clément-

type quasi-interpolation operator I_H that was introduced in [18]. We define

$$I_H : H_0^1(\Omega) \rightarrow V_H, \quad v \mapsto I_H(v) := \sum_{z \in \mathcal{N}_H} v_z \Phi_z \quad \text{with } v_z := \frac{(v, \Phi_z)_{L^2(\Omega)}}{(1, \Phi_z)_{L^2(\Omega)}} \quad (4)$$

and set $W_h := \{v_h \in V_h \mid I_H(v_h) = 0\}$.

Remark 2.1. The operator I_H is closely related to the L^2 -projection $P_{L^2} : V_h \rightarrow V_H$. In particular it holds

$$(I_H|_{V_H})^{-1} \circ I_H = P_{L^2}.$$

For details, we refer to [21, Remark 3.8] (see also [7, 18, 41]).

As was shown in [41] the $b^\varepsilon(\cdot, \cdot; \boldsymbol{\mu})$ -orthogonal complement of W_h in V_h has good H^1 -approximation properties with respect to the exact solution $u^\varepsilon(\cdot; \cdot)$. Practically, it is very expensive to compute this orthogonal complement exactly, however it can be accurately approximated by the following cheap localization strategy based on an affine decomposition of the $b^\varepsilon(\cdot, \cdot; \boldsymbol{\mu})$ -orthogonal projection operator from V_h in W_h .

Definition 2.2 (Localized orthogonal complement). Let us fix $\boldsymbol{\mu} \in \mathcal{D}$. First, for $k \in \mathbb{N}$ and $K \in \mathcal{T}_H$ we define the patch $U_k(K)$ iteratively by

$$U_0(K) := K, \quad \text{and} \quad U_k(K) := \cup \{T \in \mathcal{T}_H \mid T \cap U_{k-1}(K) \neq \emptyset\} \quad k = 1, 2, \dots \quad (5)$$

Then, define the localized remainder space by

$$W_h(U_k(K)) := \{w_h \in W_h \mid w_h = 0 \text{ in } \Omega \setminus U_k(K)\}. \quad (6)$$

Consider a nodal basis function Φ_z . For $k \in \mathbb{N}_{>0}$, $K \in \mathcal{T}_H$ with $K \subset \omega_z$, we define $Q_{h,k}^K(\Phi_z; \boldsymbol{\mu}) \in W_h(U_k(K))$ as the solution of

$$\int_{U_k(K)} a^\varepsilon(\cdot; \boldsymbol{\mu}) \nabla Q_{h,k}^K(\Phi_z; \boldsymbol{\mu}) \cdot \nabla w_h = - \int_K a^\varepsilon(\cdot; \boldsymbol{\mu}) \nabla \Phi_z \cdot \nabla w_h \quad \text{for all } w_h \in W_h(U_k(K)). \quad (7)$$

Then define $Q_{h,k}(\cdot; \boldsymbol{\mu}) : V_H \rightarrow W_h$ by

$$Q_{h,k}(\Phi_z; \boldsymbol{\mu}) := \sum_{\substack{K \in \mathcal{T}_H \\ K \subset \omega_z}} Q_{h,k}^K(\Phi_z; \boldsymbol{\mu}). \quad (8)$$

and set

$$V_{H,k}^{\text{MS}}(\boldsymbol{\mu}) := \text{span}\{\Phi_z + Q_{h,k}(\Phi_z; \boldsymbol{\mu}) \mid z \in \mathcal{N}_H\} \quad (9)$$

to be the approximation of the $b^\varepsilon(\cdot, \cdot; \boldsymbol{\mu})$ -orthogonal complement of W_h in V_h . Observe that we get the exact orthogonal complement for the case that $U_k(K) = \Omega$ for all $K \in \mathcal{T}_H$.

Observe that problem (7) is a constrained problem since solution and test functions need to be in the kernel of the interpolation operator I_H . This is practically realized by introducing a corresponding Lagrange multiplier and problem (7) becomes hence a saddle point problem. For more details we refer to [41].

Note that the assembly of $V_{H,k}^{\text{MS}}(\boldsymbol{\mu})$ is parallelizable and cheap for small values of $k \in \mathbb{N}$ (then $U_k(K)$ is a small subdomain with a diameter of order H). In numerical experiments

(cf. [27, 31, 30, 28]) it was demonstrated that $k = 1, 2, 3$ is typically sufficient. The reason is the exponential decay of $Q_{h,k}^K(v_H; \boldsymbol{\mu})$ outside of K . A quantification of this statement is given in Proposition 2.3 below.

In the following, we use the notation $a \lesssim b$, which stands for $a \leq Cb$, where C is a constant that does not depend on the parameter $\boldsymbol{\mu}$, k , the mesh sizes H and h or the rapid oscillations in a^ε (i.e. ε).

The proof of the following proposition follows the line of [27].

Proposition 2.3. *Assume that (A1)-(A2) hold and let $V_{H,k}^{\text{MS}}(\boldsymbol{\mu})$ be given by (9). We consider the following problem: find $u^{\text{MS}}(\cdot; \boldsymbol{\mu}) \in V_{H,k}^{\text{MS}}(\boldsymbol{\mu})$ such that*

$$b^\varepsilon(u^{\text{MS}}(\cdot; \boldsymbol{\mu}), v; \boldsymbol{\mu}) = (f(\cdot; \boldsymbol{\mu}), v)_{L^2(\Omega)} \quad \text{for all } v \in V_{H,k}^{\text{MS}}(\boldsymbol{\mu}). \quad (10)$$

Then, there exists a generic constant C_g (i.e. independent of H , h and ε , but possibly depending on the contrast β/α) such that if $k \geq C_g |\ln(H)|$ it holds

$$\|u^{\text{MS}}(\cdot; \boldsymbol{\mu}) - u_h(\cdot; \boldsymbol{\mu})\|_{H^1(\Omega)} \lesssim H.$$

Here, the fine scale reference $u_h(\cdot; \boldsymbol{\mu}) \in V_h$ is defined as the solution of

$$b^\varepsilon(u_h(\cdot; \boldsymbol{\mu}), v_h; \boldsymbol{\mu}) = (f(\cdot; \boldsymbol{\mu}), v_h)_{L^2(\Omega)} \quad \text{for all } v \in V_h. \quad (11)$$

In numerical experiments it can be observed that C_g can be typically replaced by 1 to find a suitable value for k (cf. [27]).

Proposition 2.3 states that the LOD approach preserves the linear order of convergence (for the H^1 -error) of the classical Finite Element Method without pre-asymptotic effects, even in case of rough coefficients a^ε .

3 Reduced Basis Decomposition

Assume that the multiscale space $V_{H,k}^{\text{MS}}(\boldsymbol{\mu})$ shall be assembled for an arbitrary $\boldsymbol{\mu}$ from a large set of relevant parameters $\Xi_{\text{train}} \subset \mathcal{D}$. Depending on the size of Ξ_{train} this can be prohibitively expensive. We therefore ask the question: is it possible to only select a *small* subset $\Xi_{\text{RB}} \subset \Xi_{\text{train}}$, assemble $V_{H,k}^{\text{MS}}(\boldsymbol{\mu})$ *only* for $\boldsymbol{\mu} \in \Xi_{\text{RB}}$ and then reuse (or combine) these results to quickly/cheaply find an approximation of $V_{H,k}^{\text{MS}}(\boldsymbol{\mu}_{\text{new}})$ for any new $\boldsymbol{\mu}_{\text{new}} \in \Xi_{\text{train}} \setminus \Xi_{\text{RB}}$.

This can be achieved by making use of the framework of the Reduced Basis (RB) method. In the following, we will elaborate the approach in detail. The goal is to construct (affine) local Reduced Basis spaces $\mathcal{V}_z^{\text{RB}}$ for each coarse node $z \in \mathcal{N}_H$ and, given a $\bar{\boldsymbol{\mu}} \in \Xi_{\text{train}}$, to select one element from each of these local spaces to span a global multiscale RB space $V_{H,k}^{\text{RB}}(\bar{\boldsymbol{\mu}})$. Any of the following steps is either categorized as *offline* or *online*. By *offline step* we mean, that the step should be considered as an "one time preprocessing step". It is significantly more expensive than an online step but need to be computed only once. This step provides a selection of representative parameters and corresponding LOD that can be used for a new parameter in the "online step." Every step that takes place after the preprocessing is finished, is what we call an online step. Online steps are quick and efficient. They can be performed a lot of times for a lot of different parameters without involving a considerable computational complexity.

3.1 Initialization

To describe the RB-LOD procedure, we start with Step 1, where we make an initial selection for the training set $\Xi_{\text{train}} \subset \mathcal{D}$.

Step 1 (Offline - Choice of a training set).

In the first step, we randomly choose a finite subset Ξ_{train} of the parameter set \mathcal{D} . We assume that the so called *training set* $\Xi_{\text{train}} \subset \mathcal{D}$ is sufficiently large so that the method is stable. Practically, Ξ_{train} can be for instance determined with the Monte-Carlo method.

Now that the training set is determined, the main computation involves to find (possibly small) parameter subsets Ξ_z^{RB} (for each coarse node $z \in \mathcal{N}_H$, this parameter set might change) for which the localized orthogonal decomposition is performed according to Definition 2.2. We start with a random initial parameter choice $\boldsymbol{\mu}_1$ as described in Step 2. Recall that $\Phi_z \in V_H$ denotes the coarse nodal basis function belonging to the node $z \in \mathcal{N}_H$.

Step 2 (Offline - Initialization with starting parameter).

Pick randomly $\boldsymbol{\mu}_1 \in \Xi_{\text{train}}$. Set $\Xi_z^{\text{RB}} := \{\boldsymbol{\mu}_1\}$ for all $z \in \mathcal{N}_H$.

Algorithm: initialize(Ξ_z^{RB})

In parallel **foreach** $K \in \mathcal{T}_H$ **do**

foreach $z \in \mathcal{N}_H$ with $z \in \overline{K}$ **do**

 compute $Q_{h,k}^K(\Phi_z; \boldsymbol{\mu}_1) \in W_h(U_k(K))$ via (7).

 Set $\mathcal{W}_{K,z}^{\text{RB}} := \text{span}\{Q_{h,k}^K(\Phi_z; \boldsymbol{\mu}_1)\}$ (local RB space).

end

end

After Step 2, we constructed a first (trivial) global RB multiscale space $V_{H,k}^{\text{RB}}(\boldsymbol{\mu})$, where

$$V_{H,k}^{\text{RB}}(\boldsymbol{\mu}) := \text{span}\{\Phi_z^{\text{MS}}(\boldsymbol{\mu}_1) \mid z \in \mathcal{N}_H\} \quad \text{with} \quad \Phi_z^{\text{MS}}(\boldsymbol{\mu}_1) := \Phi_z + \sum_{\substack{K \in \mathcal{T}_H \\ K \subset \omega_z}} Q_{h,k}^K(\Phi_z; \boldsymbol{\mu}_1).$$

Note that $V_{H,k}^{\text{RB}}(\boldsymbol{\mu})$ as above is just a preliminary space that can be used for any parameter $\boldsymbol{\mu}$, but typically without good approximation properties. Similarly, the spaces $\mathcal{W}_{K,z}^{\text{RB}}$ (for $z \in \mathcal{N}_H$ and $K \in \mathcal{T}_H$ and $K \subset \omega_z$) are the preliminary (1-dimensional) local Reduced Basis spaces. In the next step, we want to update the RB sample sets Ξ_z^{RB} and consequently the local RB spaces $\mathcal{W}_{K,z}^{\text{RB}}$. By 'update' we mean that we want to add suitable elements $\boldsymbol{\mu}_{z,2}$ from the training set Ξ_{train} to the local RB parameter sets Ξ_z^{RB} . This can be achieved using a Greedy search algorithm based on a posteriori error estimation. A general result is given in the next paragraph.

3.2 Local a posteriori error estimator

Let a parameter $\boldsymbol{\mu} \in \Xi_{\text{train}}$ be fixed and let us also fix the coarse node $z \in \mathcal{N}_H$. The solution space $W_h(U_k(K))$ is given according to (6). By $\mathcal{W}_{K,z}^{\text{RB}} = \text{span}\{Q_{h,k}^K(\Phi_z; \boldsymbol{\mu}_1), \dots, Q_{h,k}^K(\Phi_z; \boldsymbol{\mu}_J)\}$ we denote an arbitrary reduced basis subspace of $W_h(U_k(K))$. To simplify the notation in this paragraph, we denote $\xi_j^K := Q_{h,k}^K(\Phi_z; \boldsymbol{\mu}_j)$ and get $\mathcal{W}_{K,z}^{\text{RB}} = \text{span}\{\xi_1^K, \dots, \xi_J^K\}$.

Now, we consider two multiscale scale basis functions associated with the node $z \in \mathcal{N}_H$, namely $\Phi_z^{\text{MS}}(\boldsymbol{\mu}) := \Phi_z + Q_{h,k}(\Phi_z; \boldsymbol{\mu})$, where $Q_{h,k}(\Phi_z; \boldsymbol{\mu})$ is computed with the strategy proposed in Definition 2.2 and

$$\Phi_z^{\text{MS,RB}}(\boldsymbol{\mu}) = \Phi_z + Q_{h,k}^{\text{RB}}(\Phi_z; \boldsymbol{\mu}), \quad \text{where} \quad Q_{h,k}^{\text{RB}}(\Phi_z; \boldsymbol{\mu}) := \sum_{\substack{K \in \mathcal{T}_H \\ K \subset \omega_z}} Q_{h,k}^{K,\text{RB}}(\Phi_z; \boldsymbol{\mu})$$

and $Q_{h,k}^{K,\text{RB}}(\Phi_z; \boldsymbol{\mu}) \in \mathcal{W}_{K,z}^{\text{RB}}$ is the solution of the following problem:

$$\int_{U_k(K)} a^\varepsilon(\cdot; \boldsymbol{\mu}) \nabla Q_{h,k}^{K,\text{RB}}(\Phi_z; \boldsymbol{\mu}) \cdot \nabla w = - \int_K a^\varepsilon(\cdot; \boldsymbol{\mu}) \nabla \Phi_z \cdot \nabla w \quad \text{for all } w \in \mathcal{W}_{K,z}^{\text{RB}}.$$

We want to state an error estimator for the error between the 'optimal' basis function $\Phi_z^{\text{MS}}(\boldsymbol{\mu})$ and its RB approximation $\Phi_z^{\text{MS,RB}}(\boldsymbol{\mu})$. This can be obtained straightforwardly by using the the Riesz representative $r_z^K(\boldsymbol{\mu}) \in W_h(U_k(K))$ that is given as the solution of

$$(\nabla r_z^K(\boldsymbol{\mu}), \nabla w)_{L^2(U_k(K))} = \int_{U_k(K)} a^\varepsilon(\cdot; \boldsymbol{\mu}) \nabla Q_{h,k}^{K,\text{RB}}(\Phi_z; \boldsymbol{\mu}) \cdot \nabla w + \int_K a^\varepsilon(\cdot; \boldsymbol{\mu}) \nabla \Phi_z \cdot \nabla w$$

for all in $w \in W_h(U_k(K))$. Hence, it fulfills

$$(\nabla r_z^K(\boldsymbol{\mu}), \nabla(Q_{h,k}^{K,\text{RB}}(\Phi_z; \boldsymbol{\mu}) - Q_{h,k}^K(\Phi_z; \boldsymbol{\mu})))_{L^2(U_k(K))}^{1/2} = \|Q_{h,k}^K(\Phi_z; \boldsymbol{\mu}) - Q_{h,k}^{K,\text{RB}}(\Phi_z; \boldsymbol{\mu})\|_{\mathcal{E}(U_k(K))}^\mu.$$

All together, we have

$$\begin{aligned} \|\Phi_z^{\text{MS}}(\boldsymbol{\mu}) - \Phi_z^{\text{MS,RB}}(\boldsymbol{\mu})\|_{\mathcal{E}(\Omega)}^\mu &= \left(\int_\Omega \left| \sum_{\substack{K \in \mathcal{T}_H \\ K \subset \omega_z}} a^\varepsilon(\cdot; \boldsymbol{\mu})^{1/2} \nabla(Q_{h,k}^K(\Phi_z; \boldsymbol{\mu}) - Q_{h,k}^{K,\text{RB}}(\Phi_z; \boldsymbol{\mu})) \right|^2 \right)^{1/2} \\ &\leq \sqrt{C_z} \sum_{\substack{K \in \mathcal{T}_H \\ K \subset \omega_z}} \|Q_{h,k}^K(\Phi_z; \boldsymbol{\mu}) - Q_{h,k}^{K,\text{RB}}(\Phi_z; \boldsymbol{\mu})\|_{\mathcal{E}(U_k(K))}^\mu \\ &\leq \sqrt{\frac{C_z}{\alpha}} \sum_{\substack{K \in \mathcal{T}_H \\ K \subset \omega_z}} \|\nabla r_z^K(\boldsymbol{\mu})\|_{L^2(U_k(K))}. \end{aligned}$$

It remains to discuss an efficient computation of the Riesz representative $r_z^K(\boldsymbol{\mu}) \in W_h(U_k(K))$, where we exploit the affine representation of $a^\varepsilon(\cdot; \boldsymbol{\mu})$ (see also [47, Section 4.4]). Recall $a^\varepsilon(x; \boldsymbol{\mu}) = \sum_{q \in \mathcal{Q}} \Theta_q(\boldsymbol{\mu}) a_q^\varepsilon(x)$. The idea is to compute a set of "Riesz representatives basis" that can be reused for later computations.

Let $Q_{h,k}^{K,\text{RB}}(\Phi_z; \boldsymbol{\mu}) = \sum_{j=1}^J c_j(\boldsymbol{\mu}) \xi_j^K$, where $\{\xi_1^K, \dots, \xi_J^K\}$ is the basis of $\mathcal{W}_{K,z}^{\text{RB}}$ that we introduced at the beginning of this subsection. First, we compute the representatives $l_{q,z}^K \in W_h(U_k(K))$ (for $1 \leq q \leq Q$) by

$$(\nabla l_{q,z}^K, \nabla w)_{L^2(U_k(K))} = \int_K a_q^\varepsilon \nabla \Phi_z \cdot \nabla w \quad \text{for all } w \in W_h(U_k(K))$$

and the representatives $h_{q,j,z}^K \in W_h(U_k(K))$ (for $1 \leq q \leq Q$ and $1 \leq j \leq J$) by

$$(\nabla h_{q,j,z}^K, \nabla w)_{L^2(U_k(K))} = \int_{U_k(K)} a_q^\varepsilon \nabla \xi_j^K \cdot \nabla w \quad \text{for all } w \in W_h(U_k(K)).$$

The functions $l_{q,z}^K$ and $h_{q,j,z}^K$ are hence independent of the parameter $\boldsymbol{\mu}$. Consequently, the parameter-dependent Riesz representative $r_z^K(\boldsymbol{\mu})$ can be expressed as

$$r_z^K(\boldsymbol{\mu}) = \sum_{q=1}^Q \Theta_q(\boldsymbol{\mu}) \left(l_{q,z}^K + \sum_{j=1}^J c_j(\boldsymbol{\mu}) h_{q,j,z}^K \right).$$

Observe that, if $l_{q,z}^K$ and $h_{q,j,z}^K$ are precomputed, the residual $r_z^K(\boldsymbol{\mu})$ can be directly evaluated by using the formula, without solving an additional system of equations. The precomputation happens purely in the offline phase and is hence very cheap in the online phase.

3.3 Greedy search algorithm

According to the previous discussion, the next step in the approach should be to compute the parameter-independent representatives $l_{q,z}^K$ and the representative $h_{q,1,z}^K$ for the initial parameter $\boldsymbol{\mu}_1$ that we selected in Step 2. Hence, we make the following step.

Step 3 (Offline - Compute initial Riesz representatives).

Algorithm: initialRieszRepresentatives($\{\mathcal{W}_{K,z}^{\text{RB}} \mid z \in \mathcal{N}_H; K \in \mathcal{T}_H, K \subset \omega_z\}$)

foreach $q \in \{1, \dots, Q\}$ **do**

In parallel **foreach** $z \in \mathcal{N}_H$ **do**

foreach $K \in \mathcal{T}_H$ with $K \subset \omega_z$ **do**

Compute $l_{q,z}^K \in W_h(U_k(K))$ by

$$(\nabla l_{q,z}^K, \nabla w)_{L^2(U_k(K))} = \int_K a_q^\varepsilon \nabla \Phi_z \cdot \nabla w \quad \forall w \in W_h(U_k(K)).$$

and $h_{q,1,z}^K \in W_h(U_k(K))$ by

$$(\nabla h_{q,1,z}^K, \nabla w)_{L^2(U_k(K))} = \int_{U_k(K)} a_q^\varepsilon \nabla Q_{h,k}^K(\Phi_z; \boldsymbol{\mu}_1) \cdot \nabla w \quad \forall w \in W_h(U_k(K)).$$

end

end

end

Based on precomputed representatives $l_{q,z}^K$ and $h_{q,j,z}^K$, we now introduce a corresponding local error indicator $\Delta_{z,\boldsymbol{\mu}}$ according to the findings from Section 3.2.

Definition 3.1. For $z \in \mathcal{N}_H$ and $K \in \mathcal{T}_H$ with $K \subset \omega_z$, let $\mathcal{W}_{K,z}^{\text{RB}}$ be a corresponding local Reduced Basis space with basis $\{Q_{h,k}^K(\Phi_z; \boldsymbol{\mu}_{z,j}) \mid 1 \leq j \leq J\}$. For a given element $w(\boldsymbol{\mu}) \in \mathcal{W}_{K,z}^{\text{RB}}$

that is represented by

$$w(\boldsymbol{\mu}) = \sum_{j=1}^J c_j(\boldsymbol{\mu}) Q_{h,k}^K(\Phi_z; \boldsymbol{\mu}_{z,j}),$$

we define the corresponding residual error indicator $\Delta_{z,\boldsymbol{\mu}}$ by

$$\Delta_{z,\boldsymbol{\mu}} := \sqrt{\frac{C_z}{\alpha}} \sum_{\substack{K \in \mathcal{T}_H \\ K \subset \omega_z}} \|\nabla r_z^K(\boldsymbol{\mu})\|_{L^2(U_k(K))}, \quad \text{where} \quad r_z^K(\boldsymbol{\mu}) = \sum_{q=1}^Q \Theta_q(\boldsymbol{\mu}) \left(l_{q,z}^K + \sum_{j=1}^J c_j(\boldsymbol{\mu}) h_{q,j,z}^K \right).$$

The explicit computation of $l_{q,z}^K$ and $h_{q,j,z}^K$ is described in Step 4.

The next step describes a classical Greedy search procedure formulated for our setting. The idea is to start from a given parameter set Ξ_z^{RB} and a corresponding local RB space $\mathcal{W}_{K,z}^{\text{RB}}$. Then we solve the local problem in the RB space for *every* parameter in $\Xi_{\text{train}} \setminus \Xi_z^{\text{RB}}$ and use error estimator $\Delta_{z,\boldsymbol{\mu}}$ to find out for which of these parameters we make the biggest error. This parameter is relevant and should be hence added to Ξ_z^{RB} . The corresponding exact solution of the local problem (i.e the solution in $W_h(U_k(K))$) is consequently added to $\mathcal{W}_{K,z}^{\text{RB}}$. We hence need to solve three different types of problems in Step 4 below. The first type involves the local RB spaces $\mathcal{W}_{K,z}^{\text{RB}}$ (for given node $z \in \mathcal{N}_H$ and element $K \in \mathcal{T}_H$ with $K \subset \omega_z$). Here, we solve for the analog of problem (7) in $\mathcal{W}_{K,z}^{\text{RB}}$, i.e. we compute $Q_{h,k}^{K,\text{RB}}(\Phi_z; \boldsymbol{\mu}) \in \mathcal{W}_{K,z}^{\text{RB}}$ with

$$\int_{U_k(K)} a^\varepsilon(\cdot; \boldsymbol{\mu}) \nabla Q_{h,k}^{K,\text{RB}}(\Phi_z; \boldsymbol{\mu}) \cdot \nabla w = - \int_K a^\varepsilon(\cdot; \boldsymbol{\mu}) \nabla \Phi_z \cdot \nabla w \quad (12)$$

for all $w \in \mathcal{W}_{K,z}^{\text{RB}}$. Second, we need to solve for the contributions $h_{q,j,z}^K$ of the Riesz representatives, i.e. for $q \in \mathcal{Q}$, $z \in \mathcal{N}_H$, $K \in \mathcal{T}_H$ and a given parameter $\boldsymbol{\mu}_{z,j}$, find $h_{q,j,z}^K \in W_h(U_k(K))$ with

$$(\nabla h_{q,j,z}^K, \nabla w)_{L^2(U_k(K))} = \int_{U_k(K)} a_q^\varepsilon \nabla Q_{h,k}^K(\Phi_z; \boldsymbol{\mu}_{z,j}) \cdot \nabla w. \quad (13)$$

for all $w \in W_h(U_k(K))$. The third type of problems involves the standard local problems (7), which need to be solved for new parameters that are added to the parameter set.

Remark 3.2. Step 4 below involves to solve problems in the local RB spaces $\mathcal{W}_{K,z}^{\text{RB}}$. This requires the assembly of corresponding dense stiffness matrices with entries

$$\int_{U_k(K)} a^\varepsilon(\cdot; \boldsymbol{\mu}) \nabla \xi_z(\boldsymbol{\mu}_j) \cdot \nabla \xi_z(\boldsymbol{\mu}_i),$$

where $\xi_z(\boldsymbol{\mu}_i) = Q_{h,k}^K(\Phi_z; \boldsymbol{\mu}_i)$ with $\boldsymbol{\mu}_i \in \Xi_z^{\text{RB}}$ denotes a basis of $\mathcal{W}_{K,z}^{\text{RB}}$. Here we can use the affine representation of a^ε to make this procedure more efficient. After each step of the iterative procedure to update $\mathcal{W}_{K,z}^{\text{RB}}$ (i.e. the step $J \mapsto J+1$), we just have to assemble and store the new entries

$$\int_{U_k(K)} a_q^\varepsilon \nabla \xi_z(\boldsymbol{\mu}_{J+1}) \cdot \nabla \xi_z(\boldsymbol{\mu}_i) \quad \text{for } 1 \leq i \leq J \text{ and } 1 \leq q \leq Q.$$

Like that, the required system matrices (for the problems in $\mathcal{W}_{K,z}^{\text{RB}}$) are straightforwardly (and cheaply) obtained by summation over q .

Step 4 (Offline - Greedy search).

Set $\boldsymbol{\mu}_{z,1} := \boldsymbol{\mu}_1$ for all $z \in \mathcal{N}_H$.

Recall $\mathcal{W}_{K,z}^{\text{RB}} = \text{span}\{Q_{h,k}^K(\Phi_z; \boldsymbol{\mu}_{z,1})\}$ for all $z \in \mathcal{N}_H$ and all $K \in \mathcal{T}_H$ with $K \subset \omega_z$.

Algorithm: greedyLoop($\{\Xi_z^{\text{RB}} \mid z \in \mathcal{N}_H\}$, TOL)

In parallel **foreach** $z \in \mathcal{N}_H$ **do**

while $\max_{\boldsymbol{\mu} \in \Xi_{\text{train}}} \Delta_{z,\boldsymbol{\mu}} > \text{TOL}$ **do**

 Set $J := |\Xi_z^{\text{RB}}|$.

foreach $K \in \mathcal{T}_H$ with $K \subset \omega_z$ **do**

foreach $\boldsymbol{\mu} \in \Xi_{\text{train}} \setminus \Xi_z^{\text{RB}}$ **do**

 | compute $Q_{h,k}^{K,\text{RB}}(\Phi_z; \boldsymbol{\mu}) \in \mathcal{W}_{K,z}^{\text{RB}}$ via (12).

end

end

foreach $\boldsymbol{\mu} \in \Xi_{\text{train}} \setminus \Xi_z^{\text{RB}}$ **do**

 | Compute $\Delta_{z,\boldsymbol{\mu}}$ via Definition 3.1.

end

 Set $\boldsymbol{\mu}_{z,J+1} = \underset{\boldsymbol{\mu} \in \Xi_{\text{train}} \setminus \Xi_z^{\text{RB}}}{\text{argmax}} \Delta_{z,\boldsymbol{\mu}}$ and set $\Xi_z^{\text{RB}} := \Xi_z^{\text{RB}} \cup \{\boldsymbol{\mu}_{z,J+1}\}$.

 Update Riesz representatives.

foreach $K \in \mathcal{T}_H$ with $K \subset \omega_z$ **do**

 | Compute $Q_{h,k}^K(\Phi_z; \boldsymbol{\mu}_{z,J+1}) \in W_h(U_k(K))$ via (7).

 Set $\mathcal{W}_{K,z}^{\text{RB}} := \mathcal{W}_{K,z}^{\text{RB}} \oplus \text{span}\{Q_{h,k}^K(\Phi_z; \boldsymbol{\mu}_{z,J+1})\}$.

 For all $q \in \mathcal{Q}$, compute $h_{q,J+1,z}^K \in W_h(U_k(K))$ via (13).

end

 Set $W_z^{\text{RB}} := \text{span}\{Q_{h,k}(\Phi_z; \boldsymbol{\mu}) \mid \boldsymbol{\mu} \in \Xi_z^{\text{RB}}\}$, where

$$Q_{h,k}(\Phi_z; \boldsymbol{\mu}) := \sum_{\substack{K \in \mathcal{T}_H \\ K \subset \omega_z}} Q_{h,k}^K(\Phi_z; \boldsymbol{\mu}).$$

end

end

An analysis of the Greedy procedure is presented in [17]. Rates can be measured by the Kolmogorov n -width that describes how good a subset F of a Hilbert space X can be approximated by an n -dimensional subspace Y_n . In our case we have

$$F_z := \{Q_{h,k}(\Phi_z; \boldsymbol{\mu}_{z,1}), \dots, Q_{h,k}(\Phi_z; \boldsymbol{\mu}_{z,J})\}.$$

Defining

$$\omega_z^k := \cup\{U_k(K) \mid K \in \mathcal{T}_H, K \subset \omega_z\}, \quad (14)$$

the corresponding Kolmogorov n -width in $W_h(\omega_z^k)$ is defined by

$$d_n(F_z, W_h(\omega_z^k)) := \inf\left\{ \sup_{w \in F_z} \inf_{v \in Y_{z,n}} \|v - w\|_{H^1(\omega_z^k)} \mid Y_{z,n} \text{ is } n\text{-dim subspace of } W_h(\omega_z^k) \right\}.$$

If we define a space W_z^n as the span of the elements of F_z ; i.e.

$$W_z^n := \text{span}\{Q_{h,k}(\Phi_z; \boldsymbol{\mu}_{z,1}), \dots, Q_{h,k}(\Phi_z; \boldsymbol{\mu}_{z,n})\};$$

then (up to a slightly modified Greedy-strategy) it holds [17]

$$\sup_{\boldsymbol{\mu} \in \Xi_{\text{train}}} \inf_{w \in W_z^n} \|\nabla Q_{h,k}(\Phi_z; \boldsymbol{\mu}) - \nabla w\|_{L^2(\omega_z^k)} \lesssim 2^{n+1}(n+1) d_n(F_z, W_h(\omega_z^k)).$$

This means that the error inherited from the Kolmogorov n -width can be polluted by a factor of order $\mathcal{O}(2^n)$. However, it is not possible to give a general answer about the size of $d_n(F_z, W_h(\omega_z^k))$ itself. For smooth dependencies of a^ε on the parameter $\boldsymbol{\mu}$, typically exponential convergence rates can be numerically observed, leading also to an exponential convergence of the error. The usually justified assumption can be hence stated as follows: there exists some $\gamma_z > 0$ and a source-term depending constant $C(\Phi_z) > 0$ such that

$$d_n(F_z, W_h(\omega_z^k)) \lesssim C(\Phi_z) e^{-\gamma_z n}.$$

Note that we can bound $C(\Phi_z) \lesssim \|\nabla \Phi_z\|_{L^2(\omega_z)}$ because $\|\nabla Q_{h,k}(\Phi_z; \boldsymbol{\mu}_{z,j})\|_{L^2(\omega_z^k)} \lesssim \|\nabla \Phi_z\|_{L^2(\omega_z)}$ for all parameters $\boldsymbol{\mu}_{z,j}$. Combining these results, we can apply [17, Theorem 3.1 and Corollary 4.1] to state the following proposition.

Proposition 3.3. *Let $z \in \mathcal{N}_H$ and $F_z^{\text{RB}} := \{Q_{h,k}(\Phi_z; \boldsymbol{\mu}_{z,j}) \mid 1 \leq j \leq J\}$ the set obtained with the Greedy strategy. By $W_z^{\text{RB}} := \text{span}(F_z^{\text{RB}})$ we denote the corresponding J -dimensional local RB space. If the Kolmogorov n -width of F_z^{RB} in $W_h(\omega_z^k)$ satisfies*

$$d_J(F_z^{\text{RB}}, W_h(\omega_z^k)) \lesssim \|\nabla \Phi_z\|_{L^2(\omega_z)} e^{-\gamma_z J}$$

for a sufficiently large γ_z , there exists $\zeta_z > 0$ such that for all $\boldsymbol{\mu} \in \Xi_{\text{train}}$ it holds

$$\inf_{w \in W_z^{\text{RB}}} \|\nabla Q_{h,k}(\Phi_z; \boldsymbol{\mu}) - \nabla w\|_{L^2(\omega_z^k)} \lesssim \|\nabla \Phi_z\|_{L^2(\omega_z)} e^{-\zeta_z J}. \quad (15)$$

For more details on the required size of γ_z we refer to [17, Corollary 4.1] and in particular to the proofs given in [17].

Remark 3.4 (Proper Orthogonal Decomposition (POD)). As an alternative to the above described Greedy procedure, it is also possible to use the Proper Orthogonal Decomposition, also known as Karhunen-Loève decomposition, to identify suitable parameter sets Ξ_z^{RB} . The POD (cf. [36, 50, 53]) is based on the following question: given a space V , what is the optimal subspace of dimension $n \in \mathbb{N}$ so that the error of an orthogonal projection onto this space is minimized? Practically, this leads to a number of eigenvalue problems that need to be solved. The eigenvectors to the n first eigenvalues span the desired subspace. An application of this strategy to the Multiscale Finite Element Method (MsFEM) can be found in [42].

3.4 Precomputation of local stiffness matrix and load vector entries

After Step 4 the local RB spaces W_z^{RB} are assembled for every coarse node $z \in \mathcal{N}_H$. In the online phase, for a given parameter $\boldsymbol{\mu} \in \mathcal{D}$, local problems are solved in W_z^{RB} . To make this computation efficient in the online phase, it is necessary to pre-assemble the values of the corresponding stiffness matrix and the associated right hand sides. Again, we can use the affine representation of a^ε . The procedure is summarized in Step 5.

Step 5 (Offline - Preassembly of local stiffness matrix and load vector entries).

We assemble the matrices $D^{z,q} \in \mathbb{R}^{J_z \times J_z}$, where $J_z = |\Xi_z^{\text{RB}}|$.

We assemble the load vectors $F^{z,q} \in \mathbb{R}^{J_z}$, where $J_z = |\Xi_z^{\text{RB}}|$.

Algorithm: precomputationLocalSystemMatrices($\{W_z^{\text{RB}} \mid z \in \mathcal{N}_H\}$)

```

In parallel foreach  $z \in \mathcal{N}_H$  do
  for  $q = 1, \dots, Q$  do
    for  $j = 1, \dots, |\Xi_z^{\text{RB}}|$  do
      Assemble  $F_j^{z,q} := \int_{\Omega} a_q^\varepsilon \nabla \Phi_z \cdot \nabla Q_{h,k}(\Phi_z; \boldsymbol{\mu}_{z,j})$ .
      for  $i = j, \dots, |\Xi_z^{\text{RB}}|$  do
        Assemble  $D_{ji}^{z,q} = D_{ij}^{z,q} := \int_{\Omega} a_q^\varepsilon \nabla Q_{h,k}(\Phi_z; \boldsymbol{\mu}_{z,j}) \cdot \nabla Q_{h,k}(\Phi_z; \boldsymbol{\mu}_{z,i})$ .
      end
    end
  end
end

```

Assume that we want to solve a problem in the space W_z^{RB} , which is of the structure:

$$\text{find } v^{\text{RB}} \in W_z^{\text{RB}} : \quad b^\varepsilon(v^{\text{RB}}, w; \boldsymbol{\mu}) = -b^\varepsilon(\Phi_z, w; \boldsymbol{\mu}) \quad \forall w \in W_z^{\text{RB}},$$

for some coarse nodal basis function Φ_z . Then, Step 5 allows to write down the corresponding stiffness matrix $S_z(\boldsymbol{\mu})$ by pure summation: $S_z(\boldsymbol{\mu}) = \sum_{q=1}^Q \Theta_q(\boldsymbol{\mu}) D^{z,q}$. No quadrature rule is required any more. The assembly of $S_z(\boldsymbol{\mu})$ is thus fast in the online phase. The same holds for the load vector. Since the dimension of W_z^{RB} is typically small, the inversion of $S_z(\boldsymbol{\mu})$ is cheap e.g., LU type decomposition can often be used.

3.5 Precomputation of global stiffness matrix entries

In the previous two steps, we computed the local Reduced Basis spaces W_z^{RB} for $z \in \mathcal{N}_H$ and basically pre-assembled the corresponding stiffness matrices and load vectors. In the online phase, for a given parameter $\boldsymbol{\mu} \in \mathcal{D}$, we want to construct

$$V_{H,k}^{\text{RB}}(\boldsymbol{\mu}) = \text{span}\{\Phi_z^{\text{RB}}(\boldsymbol{\mu}) \mid z \in \mathcal{N}_H\}.$$

where the RB multiscale basis function is given by the following problem: find $\Phi_z^{\text{RB}}(\boldsymbol{\mu}) \in \Phi_z + W_z^{\text{RB}}$ such that

$$b^\varepsilon(\Phi_z^{\text{RB}}(\boldsymbol{\mu}), w; \boldsymbol{\mu}) = 0 \quad \forall w \in W_z^{\text{RB}}. \quad (16)$$

Various terms of the entries of the stiffness matrix $b^\varepsilon(\Phi_{z_m}^{\text{RB}}(\boldsymbol{\mu}), \Phi_{z_n}^{\text{RB}}(\boldsymbol{\mu}), \boldsymbol{\mu})$, for $1 \leq n, m \leq N$, can be pre-computed in the offline stage as explained below. In this section, we hence discuss the pre-computation of certain terms that are required in the online phase.

For this purpose let $\Phi_{z_m}^{\text{RB}}(\boldsymbol{\mu})$ be given by

$$\Phi_{z_m}^{\text{RB}}(\boldsymbol{\mu}) = \Phi_z + \sum_{\boldsymbol{\mu}_{z,j} \in \Xi_z^{\text{RB}}} c_z(\boldsymbol{\mu}) Q_{h,k}(\Phi_z; \boldsymbol{\mu}_{z,j}).$$

With this, we can write the entries of the system matrix by

$$\begin{aligned}
b^\varepsilon(\Phi_{z_m}^{\text{RB}}(\boldsymbol{\mu}), \Phi_{z_n}^{\text{RB}}(\boldsymbol{\mu}), \boldsymbol{\mu}) &= \sum_{q=1}^Q \Theta_q(\boldsymbol{\mu}) \int_{\Omega} a_q^\varepsilon \nabla \Phi_{z_m} \cdot \nabla \Phi_{z_n} \\
&+ \sum_{q=1}^Q \sum_{\boldsymbol{\mu}_{z_m, j} \in \Xi_{z_m}^{\text{RB}}} \Theta_q(\boldsymbol{\mu}) c_{z_m, j}(\boldsymbol{\mu}) \int_{\Omega} a_q^\varepsilon \nabla Q_{h, k}(\Phi_{z_m}; \boldsymbol{\mu}_{z_m, j}) \cdot \nabla \Phi_{z_n} \\
&+ \sum_{q=1}^Q \sum_{\boldsymbol{\mu}_{z_n, i} \in \Xi_{z_n}^{\text{RB}}} \Theta_q(\boldsymbol{\mu}) c_{z_n, i}(\boldsymbol{\mu}) \int_{\Omega} a_q^\varepsilon \nabla \Phi_{z_m} \cdot \nabla Q_{h, k}(\Phi_{z_n}; \boldsymbol{\mu}_{z_n, i}) \\
&+ \sum_{q=1}^Q \sum_{\boldsymbol{\mu}_{z_m, j} \in \Xi_{z_m}^{\text{RB}}} \sum_{\boldsymbol{\mu}_{z_n, i} \in \Xi_{z_n}^{\text{RB}}} \Theta_q(\boldsymbol{\mu}) c_{z_m, j}(\boldsymbol{\mu}) c_{z_n, i}(\boldsymbol{\mu}) \int_{\Omega} a_q^\varepsilon \nabla Q_{h, k}(\Phi_{z_m}; \boldsymbol{\mu}_{z_m, j}) \cdot \nabla Q_{h, k}(\Phi_{z_n}; \boldsymbol{\mu}_{z_n, i}).
\end{aligned} \tag{17}$$

Hence, independent of $\boldsymbol{\mu} \in \mathcal{D}$, we can precompute

$$\begin{aligned}
S_{nm}^q &= S_{mn}^q := \int_{\Omega} a_q^\varepsilon \nabla \Phi_{z_m} \cdot \nabla \Phi_{z_n}; \\
M_{nm}^q(i, j) &= M_{mn}^q(j, i) := \int_{\Omega} a_q^\varepsilon \nabla Q_{h, k}(\Phi_{z_m}; \boldsymbol{\mu}_{z_m, j}) \cdot \nabla Q_{h, k}(\Phi_{z_n}; \boldsymbol{\mu}_{z_n, i}) \\
\text{and} \quad R_{nm}^q(j) &:= \int_{\Omega} a_q^\varepsilon \nabla Q_{h, k}(\Phi_{z_m}; \boldsymbol{\mu}_{z_m, j}) \cdot \nabla \Phi_{z_n}
\end{aligned} \tag{18}$$

for $1 \leq n, m \leq N$ and for $1 \leq i \leq |\Xi_{z_n}^{\text{RB}}|$ and $1 \leq j \leq |\Xi_{z_m}^{\text{RB}}|$. Once these entries are precomputed, the global stiffness matrix entry $b^\varepsilon(\Phi_{z_m}^{\text{RB,MS}}(\boldsymbol{\mu}), \Phi_{z_n}^{\text{RB,MS}}(\boldsymbol{\mu}), \boldsymbol{\mu})$ can be again obtained via a simple summation. Note that we did not assume an affine representation of the source $f(\cdot; \boldsymbol{\mu})$. Hence, we can typically not precompute it. However, this is no problem since the reduced basis multiscale basis functions $\Phi_z^{\text{RB}}(\boldsymbol{\mu})$ are only locally supported. Hence, the usage of a quadrature rule for assembling the load vector of the global problem is not very costly and can be performed on-the-fly in the online phase. Furthermore, if an affine representation of $f(\cdot; \boldsymbol{\mu})$ is available, it can be exploited and the entries of the load vector can be precomputed in the same way as for the stiffness matrix.

Using equations (17) and (18) it is straightforwardly possible to compute the global stiffness matrix by simple summation. We have

$$\begin{aligned}
&b^\varepsilon(\Phi_{z_m}^{\text{RB}}(\boldsymbol{\mu}), \Phi_{z_n}^{\text{RB}}(\boldsymbol{\mu}), \boldsymbol{\mu}) \\
&= \sum_{q=1}^Q \Theta_q(\boldsymbol{\mu}) \left(S_{nm}^q + \sum_{\boldsymbol{\mu}_{z_m, j} \in \Xi_{z_m}^{\text{RB}}} c_{z_m, j}(\boldsymbol{\mu}) R_{nm}^q(j) + \sum_{\boldsymbol{\mu}_{z_n, i} \in \Xi_{z_n}^{\text{RB}}} c_{z_n, i}(\boldsymbol{\mu}) R_{mn}^q(i) \right. \\
&\quad \left. + \sum_{\boldsymbol{\mu}_{z_m, j} \in \Xi_{z_m}^{\text{RB}}} \sum_{\boldsymbol{\mu}_{z_n, i} \in \Xi_{z_n}^{\text{RB}}} c_{z_m, j}(\boldsymbol{\mu}) c_{z_n, i}(\boldsymbol{\mu}) M_{nm}^q(i, j) \right).
\end{aligned} \tag{19}$$

3.6 The online phase

Let $\boldsymbol{\mu} \in \mathcal{D}$ be arbitrary given parameter for which we want to obtain a multiscale approximation of the original problem (2). This can be achieved in an efficient way using the pre-assembled quantities from Step 1-5 and equation (18) (i.e. the localized RB spaces W_z^{RB} and the corresponding pre-computed system matrix and load vector entries).

Local problems. We recall that we have to compute the basis functions $\Phi_z^{\text{RB}}(\boldsymbol{\mu}) \in \Phi_z + W_z^{\text{RB}}$ for $z = 1, \dots, N$ solutions of problem (16). This can be done with low costs using the results from equation (17) and (18). Recall (for $z \in \mathcal{N}_H$ and $1 \leq q \leq Q$) the precomputed matrices $D^{z,q}$ and load vectors $F^{z,q}$ (see Step 5). We define $D^z(\boldsymbol{\mu}) := \sum_{q=1}^Q \Theta_q(\boldsymbol{\mu}) D^{z,q}$ and $F^z(\boldsymbol{\mu}) := \sum_{q=1}^Q \Theta_q(\boldsymbol{\mu}) F^{z,q}$. With that, solving for the solution $\Phi_z^{\text{RB,MS}}(\boldsymbol{\mu})$ of (16) is equivalent to solving for $q_z(\boldsymbol{\mu}) \in \mathbb{R}^{J_z}$ with

$$D^z(\boldsymbol{\mu}) q_z(\boldsymbol{\mu}) = F^z(\boldsymbol{\mu}) \quad \text{and defining} \quad \Phi_z^{\text{RB}}(\boldsymbol{\mu}) := \Phi_z + \sum_{j=1}^{J_z} (q_z(\boldsymbol{\mu}))_j Q_{h,k}(\Phi_z; \boldsymbol{\mu}_{z,j}). \quad (20)$$

The matrix $D^z(\boldsymbol{\mu})$ is low dimensional and cheap to invert. No saddle point solver is required. The accuracy of $\Phi_z^{\text{RB}}(\boldsymbol{\mu})$ can be checked using the error estimator $\Delta_{z,\boldsymbol{\mu}}$ defined in Definition 3.1.

Global problem. Once the RB basis functions $\Phi_z^{\text{RB}}(\boldsymbol{\mu})$ are computed we can define

$$V_{H,k}^{\text{RB}}(\boldsymbol{\mu}) := \text{span}\{\Phi_z^{\text{RB}}(\boldsymbol{\mu}) \mid z \in \mathcal{N}_H\} \quad (21)$$

and solve for $u_H^{\text{RB}}(\cdot; \boldsymbol{\mu}) \in V_{H,k}^{\text{RB}}(\boldsymbol{\mu})$ with

$$b^\varepsilon(u_H^{\text{RB}}(\cdot; \boldsymbol{\mu}), v; \boldsymbol{\mu}) = (f(\cdot; \boldsymbol{\mu}), v)_{L^2(\Omega)} \quad \forall v \in V_{H,k}^{\text{RB}}(\boldsymbol{\mu}). \quad (22)$$

The solving can be done in an efficient way using the precomputed terms from (18). We define the entries of the global stiffness matrix $S(\boldsymbol{\mu}) \in \mathbb{R}^{N \times N}$ by

$$S(\boldsymbol{\mu})_{nm} := b^\varepsilon(\Phi_{z_m}^{\text{RB}}(\boldsymbol{\mu}), \Phi_{z_n}^{\text{RB}}(\boldsymbol{\mu}), \boldsymbol{\mu}), \quad \text{exploiting formula (19)}. \quad (23)$$

The entries of the global load vector $F(\boldsymbol{\mu}) \in \mathbb{R}^N$ is given by

$$F(\boldsymbol{\mu})_n := (f(\cdot; \boldsymbol{\mu}), \Phi_{z_n}^{\text{RB}}(\boldsymbol{\mu}))_{L^2(\Omega)}. \quad (24)$$

With that we solve for $\mathbf{u}^{\text{RB}} \in \mathbb{R}^N$

$$S(\boldsymbol{\mu}) \mathbf{u}^{\text{RB}} = F(\boldsymbol{\mu}) \quad (25)$$

and can set $u_H^{\text{RB}}(\cdot; \boldsymbol{\mu}) := \sum_{n=1}^N \mathbf{u}_n^{\text{RB}} \Phi_{z_n}^{\text{RB}}(\boldsymbol{\mu})$.

Remark 3.5. Even though the method is specifically designed to solve parameter-dependent multiscale problems, it can be also used to solve nonlinear and time-dependent multiscale problems. An example of how the method can be used to treat a nonlinear equation is presented in Section 4.2. The treatment of time-dependent problems is similar. After introducing a suitable time discretization (e.g. by an implicit Euler scheme), the problem that needs to be solved in every time step is typically a standard elliptic problem. If we now interpret the time-dependency as an additional parameter, we obtain a parametrized elliptic multiscale problem for each time step. Hence, a time-dependent (and possibly additionally parameter dependent) equation can be seen as a large set of parametrized stationary problems. The application of the RB-LOD is obvious and each of the time steps becomes cheap.

Step 6 (Online phase).

Compute a RB multiscale approximation for a given (online) parameter $\boldsymbol{\mu} \in \mathcal{D}$.

Algorithm: getMultiscaleApproximation($\{W_z^{\text{RB}} \mid z \in \mathcal{N}_H\}$)

In parallel **foreach** $z \in \mathcal{N}_H$ **do**

 Compute $\Phi_z^{\text{RB}}(\boldsymbol{\mu}) \in \Phi_z + W_z^{\text{RB}}$ with

$$b^\varepsilon(\Phi_z^{\text{RB}}(\boldsymbol{\mu}), w; \boldsymbol{\mu}) = 0 \quad \forall w \in W_z^{\text{RB}}$$

 using the precomputed formulation (20).

end

Set $V_{H,k}^{\text{RB}}(\boldsymbol{\mu}) := \text{span}\{\Phi_z^{\text{RB}}(\boldsymbol{\mu}) \mid z \in \mathcal{N}_H\}$.

Solve for the final RB multiscale approximation $u_H^{\text{RB}}(\cdot; \boldsymbol{\mu}) \in V_{H,k}^{\text{RB}}(\boldsymbol{\mu})$ with

$$b^\varepsilon(u_H^{\text{RB}}(\cdot; \boldsymbol{\mu}), v; \boldsymbol{\mu}) = (f(\cdot; \boldsymbol{\mu}), v)_{L^2(\Omega)} \quad \forall v \in V_{H,k}^{\text{RB}}(\boldsymbol{\mu}).$$

using the formulas (23)-(25).

3.7 A priori error analysis

The convergence analysis for a multiscale reduced basis method usually combines an existing a priori error analysis for the parameter independent multiscale approximation with error estimates for the Greedy procedure such as stated in Proposition 3.3 (see [3, 5, 6]). The following result guarantees convergence of the method, independent of the variations in the coefficient a^ε .

Theorem 3.6. *Assume (A1)-(A3), let $\boldsymbol{\mu} \in \Xi_{\text{train}}$ and let the assumptions of Proposition 3.3 be fulfilled. Furthermore we assume that there exists $J \in \mathbb{N}$ such that $J \lesssim \dim W_z^{\text{RB}} \lesssim J$ for all nodes $z \in \mathcal{N}_H$. By $u_h(\cdot; \boldsymbol{\mu}) \in V_h$ we denote the reference solution, i.e. the solution of (11), and by $u_H^{\text{RB}}(\cdot; \boldsymbol{\mu}) \in V_{H,k}^{\text{RB}}(\boldsymbol{\mu})$ the RB-LOD approximation obtained in Step 6. If $k \geq C_g |\ln(H)|$ as in Proposition 2.3 then it holds*

$$\|u_H^{\text{RB}}(\cdot; \boldsymbol{\mu}) - u_h(\cdot; \boldsymbol{\mu})\|_{H^1(\Omega)} \lesssim H + H^{-1} e^{-J\zeta} k^{d/2},$$

where we define $0 < \zeta := \min_{z \in \mathcal{N}_H} \zeta_z$ with ζ_z being the constant from Proposition 3.3. Obviously, if $J \geq 2\zeta^{-1} |\ln(H)|$ we preserve the linear convergence rate in H .

Proof. Consider the classical LOD basis function $\Phi_z^{\text{MS}}(\boldsymbol{\mu}) := \Phi_z + Q_{h,k}(\Phi_z; \boldsymbol{\mu})$ and its RB-LOD version $\Phi_z^{\text{RB}}(\boldsymbol{\mu}) \in \Phi_z + W_z^{\text{RB}}$ as in Step 6. We define $\lambda_z^{\text{RB}}(\boldsymbol{\mu}) := \Phi_z^{\text{RB}}(\boldsymbol{\mu}) - \Phi_z \in W_z^{\text{RB}}$ and obtain with (15)

$$\|\Phi_z^{\text{MS}}(\boldsymbol{\mu}) - \Phi_z^{\text{RB}}(\boldsymbol{\mu})\|_{H^1(\omega_z^k)} = \|Q_{h,k}(\Phi_z; \boldsymbol{\mu}) - \lambda_z^{\text{RB}}(\boldsymbol{\mu})\|_{H^1(\omega_z^k)} \lesssim \|\nabla \Phi_z\|_{L^2(\omega_z)} e^{-\zeta_z J}. \quad (26)$$

Writing the classical LOD solution $u^{\text{MS}}(\cdot; \boldsymbol{\mu}) \in V_{H,k}^{\text{MS}}(\boldsymbol{\mu})$ (see problem (10)) as

$$u^{\text{MS}}(\cdot; \boldsymbol{\mu}) = \sum_{z \in \mathcal{N}_H} u_z^{\text{MS}}(\boldsymbol{\mu}) \Phi_z^{\text{MS}}(\boldsymbol{\mu}),$$

we obtain

$$\begin{aligned}
& \inf_{z \in V_{H,k}^{\text{RB}}(\boldsymbol{\mu})} \|u^{\text{MS}}(\cdot; \boldsymbol{\mu}) - z\|_{H^1(\Omega)}^2 \leq \left\| \sum_{z \in \mathcal{N}_{\mathcal{H}}} u_z^{\text{MS}}(\boldsymbol{\mu}) (\Phi_z^{\text{MS}}(\boldsymbol{\mu}) - \Phi_z^{\text{RB}}(\boldsymbol{\mu})) \right\|_{H^1(\Omega)}^2 \\
& \lesssim \sum_{z \in \mathcal{N}_{\mathcal{H}}} k^d |u_z^{\text{MS}}(\boldsymbol{\mu})|^2 \|\nabla (\Phi_z^{\text{MS}}(\boldsymbol{\mu}) - \Phi_z^{\text{RB}}(\boldsymbol{\mu}))\|_{L^2(\Omega)}^2 \stackrel{(26)}{\lesssim} e^{-2\zeta J} k^d \sum_{z \in \mathcal{N}_{\mathcal{H}}} |u_z^{\text{MS}}(\boldsymbol{\mu})| \|\nabla \Phi_z\|_{L^2(\omega_z)} \\
& \lesssim e^{-2\zeta J} H^{-2} k^d \sum_{z \in \mathcal{N}_{\mathcal{H}}} |u_z^{\text{MS}}(\boldsymbol{\mu})|^2 \|\Phi_z\|_{L^2(\omega_z)}^2 \lesssim e^{-2\zeta J} H^{-2} k^d \|\nabla u^{\text{MS}}(\cdot; \boldsymbol{\mu})\|_{L^2(\Omega)}^2 \\
& \lesssim e^{-2\zeta J} H^{-2} k^d \|f(\cdot, \boldsymbol{\mu})\|_{L^2(\Omega)}^2,
\end{aligned}$$

where $\|f(\cdot, \boldsymbol{\mu})\|_{L^2(\Omega)}$ is uniformly bounded by (A2). In total, using Galerkin orthogonality and Proposition 2.3 with $k \geq C_g |\ln(H)|$, we obtain

$$\begin{aligned}
\|u_H^{\text{RB}}(\cdot; \boldsymbol{\mu}) - u_h(\cdot; \boldsymbol{\mu})\|_{H^1(\Omega)} & \lesssim \inf_{z \in V_{H,k}^{\text{RB}}(\boldsymbol{\mu})} \|z - u_h(\cdot; \boldsymbol{\mu})\|_{H^1(\Omega)} \\
& \lesssim \inf_{z \in V_{H,k}^{\text{RB}}(\boldsymbol{\mu})} \|z - u^{\text{MS}}(\cdot; \boldsymbol{\mu})\|_{H^1(\Omega)} + \|u^{\text{MS}}(\cdot; \boldsymbol{\mu}) - u_h(\cdot; \boldsymbol{\mu})\|_{H^1(\Omega)} \\
& \lesssim e^{-\zeta J} H^{-1} k^{d/2} + H.
\end{aligned}$$

□

4 Numerical experiments

In this section we present two numerical experiments. In the first numerical experiment, we consider a parameterized linear elliptic problem as given by (1) and demonstrate the applicability of RB-LOD. In the second numerical experiment we show how the method can be used to solve nonlinear elliptic problems such as the stationary Richards equation.

As a measure for the error we will consider the relative error norms $\|\cdot\|_{L^2(\Omega)}^{\text{rel}}$, respectively $\|\cdot\|_{H^1(\Omega)}^{\text{rel}}$, we denote, i.e. the absolute errors divided by the associated norm of the fine scale reference solution.

For the computation times stated in Table 4 and 8, we use the following notation.

- $t^{\text{off, local}}(K)$: For a fixed coarse element $K \in \mathcal{T}_H$, $t^{\text{off, local}}(K)$ denotes the time for solving all local problems (in the offline phase) that are associated with this element. Note that each coarse element contains 3 coarse nodes and for each coarse node the problem needs to be solved in average for 2 – 16 parameters (depending on the model problem and the location) before the error falls below the tolerance. The time also contains the time for solving for the local Riesz representatives (which are required for the error estimation) and it contains the time for assembling the required system matrices and right hand sides. Note that a further parallelization is possible here.
- $t_{\text{average}}^{\text{off, local}}$: The average time of $t^{\text{off, local}}(K)$ over all $K \in \mathcal{T}_H$.
- $t_{\text{average}}^{\text{on, local}}$: The average time for solving one local problem in the online phase. Note, in the online phase we only need to solve one problem for each coarse node.
- $t_{\text{average}}^{\text{on, global}}$: The average time for solving the global problem (in the case of model problem 1) or the average time for solving the global problem for one iteration step (in the case of model problem 2).

4.1 Model Problem 1

In this section we consider the following parametrized model problem: find $u^\varepsilon(x; \boldsymbol{\mu}) \in H_0^1(\Omega)$ such that

$$-\nabla \cdot (a^\varepsilon(x; \boldsymbol{\mu}) \nabla u^\varepsilon(x; \boldsymbol{\mu})) = 1 \quad \text{in } \Omega,$$

with

$$a^\varepsilon(x; \boldsymbol{\mu}) := \sum_{q=1}^4 \Theta_q(\boldsymbol{\mu}) a_q^\varepsilon(x),$$

where

$$\begin{aligned} \Theta_1(\boldsymbol{\mu}) &:= 2 + \sin(4\boldsymbol{\mu}), & \Theta_2(\boldsymbol{\mu}) &:= 2 + \boldsymbol{\mu}^2 - \cos(\sqrt{|\boldsymbol{\mu}|}), \\ \Theta_3(\boldsymbol{\mu}) &:= 2 + \cos(\sqrt{|\boldsymbol{\mu}|}) \quad \text{and} & \Theta_4(\boldsymbol{\mu}) &:= 1 + \sqrt{|\boldsymbol{\mu}|} + (1/10)|\boldsymbol{\mu}|^{3/2}. \end{aligned}$$

and a_q^ε functions given by a_1^ε , a_2^ε , a_3^ε and a_4^ε . For a given $\varepsilon = 0.1$ we define

$$\begin{aligned} a_1^\varepsilon(x_1, x_2) &:= \begin{pmatrix} (5\pi^{-2}(4 + 2\cos(2\pi x_1/\varepsilon))^{-1} & 0 \\ 0 & (4\pi)^{-1}(5 + 2.5\cos(2\pi x_1/\varepsilon)) \end{pmatrix}, \\ a_2^\varepsilon(x_1, x_2) &:= (10 + 9\sin(2\pi\sqrt{2x_1}/\varepsilon)\sin(4.5\pi x_2^2/\varepsilon)) \begin{pmatrix} 1/100 & 0 \\ 0 & 1/100 \end{pmatrix}, \\ a_3^\varepsilon(x) &:= ((3/25) + (1/20)g^\varepsilon(x)) \begin{pmatrix} 1 & 0 \\ 0 & 1 \end{pmatrix}, \end{aligned}$$

where

$$g^\varepsilon(x_1, x_2) := \sin\left(\lfloor x_1 + x_2 \rfloor + \lfloor \frac{x_1}{\varepsilon} \rfloor + \lfloor \frac{x_2}{\varepsilon} \rfloor\right) + \cos\left(\lfloor x_2 - x_1 \rfloor + \lfloor \frac{x_1}{\varepsilon} \rfloor + \lfloor \frac{x_2}{\varepsilon} \rfloor\right),$$

and we define the last coefficient by

$$a_4^\varepsilon(x) := (h \circ c_\varepsilon)(x) \quad \text{with } h(t) := \begin{cases} t^4 & \text{for } \frac{1}{2} < t < 1 \\ t^{\frac{3}{2}} & \text{for } 1 < t < \frac{3}{2} \\ t & \text{else} \end{cases}$$

and

$$c^\varepsilon(x_1, x_2) := 1 + \frac{1}{10} \sum_{j=0}^4 \sum_{i=0}^j \left(\frac{2}{j+1} \cos\left(\lfloor ix_2 - \frac{x_1}{1+i} \rfloor + \lfloor \frac{ix_1}{\varepsilon} \rfloor + \lfloor \frac{x_2}{\varepsilon} \rfloor\right) \right).$$

We set $\mathcal{D} := [0, 5]$ and a training set consisting of 100 randomly distributed parameters. The online parameter is chosen to be $\boldsymbol{\mu} = 2.012$.

In all the computations the fine grid \mathcal{T}_h is the uniformly refined grid with mesh size $h = 2^{-7}$ which resolves the microstructure. We also fixed the relative RB tolerance for the offline Greedy search (i.e. Step 4) with the value TOL= 0.1. This value is small enough so that we recover the classical convergence rates for the RB-LOD solution (for the selected online parameter and in the sense of Proposition 2.3) and smaller values do not change the final errors. The RB-LOD approximation is denoted by u_H^{RB} and the reference solution obtained with a standard finite element method on the fine grid \mathcal{T}_h is denoted by u_h . The results are depicted in Table 1 and 2. More precisely, in the online phase we observe a linear convergence (with respect to the coarse mesh size H) for the H^1 -error and a quadratic order convergence for the L^2 -error. We also observe a linear order convergence of the coarse part of

the RB-LOD approximation denoted by u_H^c and given by the L^2 -projection of the RB-LOD approximation into the coarse space, i.e. $u_H^c := \sum_{z \in \mathcal{N}_H} \alpha_z^{\text{RB}} \Phi_z$ if $u_H^{\text{RB}} = \sum_{z \in \mathcal{N}_H} \alpha_z^{\text{RB}} \Phi_z^{\text{RB}}$. In some cases, e.g. if we are only interested in an effective L^2 -approximation of the exact solution, it might be hence sufficient to only store u_H^c instead of u_H^{RB} (see also [21]).

The findings are emphasized by Figure 2, where the various approximations are depicted for the case $(H, k) = (2^{-3}, 2)$. Despite the very coarse coarse grid, we still observe that the RB-LOD approximation is hardly distinguishable from the FEM reference solution for $h = 2^{-7}$. Even the coarse part alone captures all relevant features.

The number of local RB-LOD basis functions (i.e. the dimension of the space W_z^{RB} computed in the offline Step 4) is between 4 and 16 depending on the node z . In average W_z^{RB} contains between 7 – 8 basis functions. Hence its dimension is very small. An example for a particular node $z \in \mathcal{N}_H$ is given in Table 3, where we also illustrate the decay of the RB error. In the online phase (i.e. in Step 6) we use the spaces W_z^{RB} to compute *one* online basis function $\Phi_z^{\text{RB}}(\boldsymbol{\mu})$ for each coarse node $z \in \mathcal{N}_H$. The RB-LOD online basis function $\Phi_z^{\text{RB}}(\boldsymbol{\mu})$ is a smoothed version of the classical coarse nodal basis function Φ_z . An example how it looks like is given in Figure 2.

Finally, the computational costs are depicted in Table 4. As expected, the costs in the online phase are extremely low. The offline costs that arise for a single coarse element $K \in \mathcal{T}_H$ (see first column of Table 4) might appear a bit high at first glance. However, recall that we need to solve a lot of problems on each of the coarse elements. Since we have in average 8 relevant parameters for each coarse node, since K contains 3 coarse nodes and since we need to solve the corrector problems and the problems for the Riesz representatives, we need to solve approximately $3 \times 8 \times 2 = 48$ local saddle point problems in each coarse element K . This explains the high CPU times. However, we also note that these problems (associated with an element K) can be further parallelized. Hence, if enough cores are available the costs can be distributed and the CPU times for one element can be even decreased to a few seconds.

Table 1: *Model Problem 1. For $h = 2^{-7}$ we denote the full RB-LOD error by $e_H^{\text{RB}} := p_H^{\text{RB}} - p_h$ and the coarse part of the RB-LOD error by $e_H^c := u_H^{\text{RB}} - u_h$. By k we denote the (fixed) localization according to Definition 2.2. The table depicts errors for various combinations of H and k .*

H	k	$\ e_H^c\ _{L^2(\Omega)}^{\text{rel}}$	$\ e_H^{\text{RB}}\ _{L^2(\Omega)}^{\text{rel}}$	$\ e_H^{\text{RB}}\ _{H^1(\Omega)}^{\text{rel}}$
2^{-2}	0	0.20386	0.20355	0.44348
2^{-2}	1	0.11778	0.05939	0.23663
2^{-2}	2	0.11331	0.04106	0.14681
2^{-2}	3	0.11325	0.03373	0.12434
2^{-3}	1	0.14199	0.14207	0.39250
2^{-3}	2	0.02878	0.01076	0.09263
2^{-3}	3	0.02862	0.00869	0.07865
2^{-4}	1	0.49456	0.49483	0.69713
2^{-4}	2	0.01137	0.00749	0.09558
2^{-4}	3	0.00984	0.00663	0.07746
2^{-4}	4	0.00976	0.00172	0.02834

Table 2: *Model Problem 1.* As suggested by Proposition 2.3 we couple k and H by $k = k(H) := \lfloor |\ln(H)| + 1 \rfloor$ to recover the typical convergence rates. The full RB-LOD error is given by $e_H^{\text{RB}} := p_H^{\text{RB}} - p_h$ and the coarse part by $e_H^c := u_H^{\text{RB}} - u_h$. For each of the errors $\|e_H\|$ below (for $H = 2^{-i}$), we define the average EOC by $\text{EOC} := \frac{1}{2} \sum_{i=1}^2 \log_2(\|e_{2^{-i}}\| / \|e_{2^{-(i+1)}}\|) / \log_2(2)$.

H	$k(H)$	$\ e_H^c\ _{L^2(\Omega)}^{\text{rel}}$	$\ e_H^{\text{RB}}\ _{L^2(\Omega)}^{\text{rel}}$	$\ e_H^{\text{RB}}\ _{H^1(\Omega)}^{\text{rel}}$
2^{-2}	2	0.11331	0.04106	0.14681
2^{-3}	3	0.02862	0.00869	0.07865
2^{-4}	4	0.00976	0.00172	0.02834
EOC		1.769	2.289	1.187

Table 3: *Model Problem 1.* Let \mathcal{T}_h denote the (uniformly refined) fine grid with $h = 2^{-7}$. The results in the table refer to a given coarse node $z = (0.03125, 0.03125) \in \mathcal{N}_H$. Using the Greedy algorithm (i.e. Step 4) we identify the relevant parameters that are added to the local parameter set Ξ_z^{RB} . In the first column we depict the added parameter and in the second column the corresponding maximum estimated error. In our example, 4 parameters are added before the maximum estimated error falls below the tolerance $\text{TOL} = 0.1$.

added parameter	maximum estimated error
2.5	1.47381
5.0	0.60277
0.353535	0.10932
4.39394	< TOL

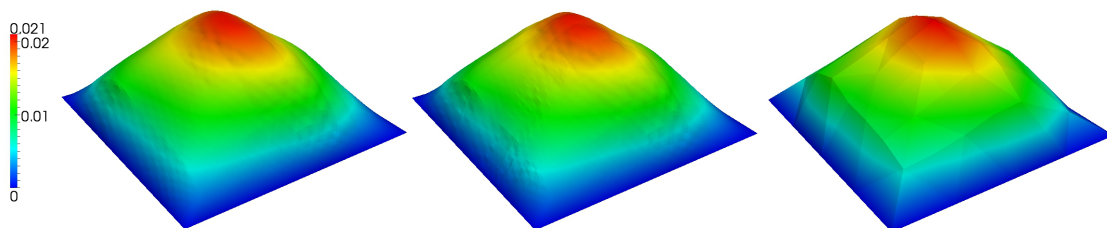


Figure 1: *Model Problem 1.* Left Picture: Standard finite element approximation on \mathcal{T}_h with $h = 2^{-7}$. Middle picture: RB-LOD approximation (for the online parameter $\mu = 2.012$) on \mathcal{T}_H with $H = 2^{-3}$ and for $(k, h) = (2, 2^{-7})$. Right picture: The coarse part of the aforementioned RB-LOD approximation, i.e. its L^2 -Projection in V_H .

4.2 Model Problem 2

In model problem 2 we consider the stationary Richards equation given in the stationary case by

$$-\nabla \cdot (K^\varepsilon(x) k r(x, s(x))) \nabla p(x) = f(x) \quad \text{in } \Omega. \quad (27)$$

The Richards equation has two unknowns, the pressure p and the saturation/water content s . It describes the distribution of subsurface water and can be used for simulating flooding events or to predict the effects of dams or modifications of river courses. The Richards equation can be derived from the two-phase flow equations (with water as the first phase and

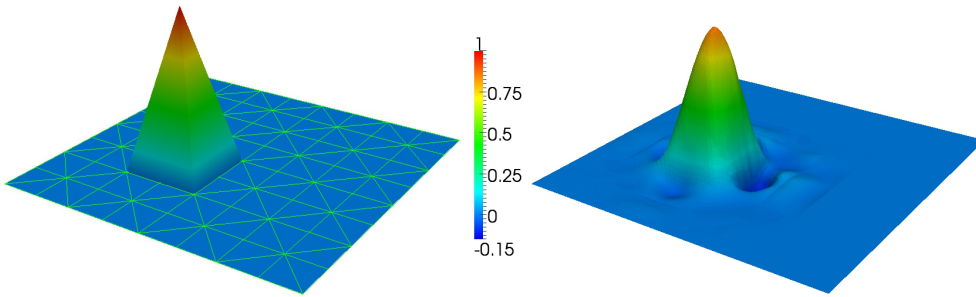


Figure 2: *Model Problem 1. Left Picture: Nodal basis function on the coarse grid \mathcal{T}_H with $H = 2^{-3}$. Right Picture: The corresponding (online) RB-LOD basis function (on \mathcal{T}_H with $H = 2^{-3}$) determined with the described RB-LOD method with localization parameter $k = 2$ and $h = 2^{-7}$. The basis function was determined for the online parameter $\mu = 2.012$.*

Table 4: *Model Problem 1. The table depicts various CPU times where we use the notation introduced at the beginning of this section.*

H	k	$t_{\text{average}}^{\text{off, local}}$	$t_{\text{average}}^{\text{on, local}}$	$t_{\text{average}}^{\text{on, global}}$
2^{-2}	2	343.17 [s]	0.15 [s]	0.003 [s]
2^{-3}	2	119.29 [s]	0.132 [s]	0.003 [s]
2^{-4}	2	38.30 [s]	0.136 [s]	0.004 [s]

air as the second) under the assumption that the pressure in the second phase is basically constant. Here, K^ε describes the absolute permeability, kr the (soil-type- and saturation-dependent) relative permeability and f a given source or sink term. The saturation s takes values between 0 and 1, where 0 means that a region is completely dry and 1 means that the region is fully occupied by water. To remove one of the unknowns from the equation, it is possible to find a model that expresses the pressure p in terms of the saturation s . The most popular models are according to Brooks and Corey [16], Van Genuchten [54] and Gardner [22]. In the following example, we use the Brooks-Corey model which is given in the following way. Assume that the domain Ω consists of a union of subdomains Ω_q (for $1 \leq q \leq Q$), where each of the Ω_q is occupied by a different type of soil. Then (cf. see [12]) for $x \in \Omega_q$, we can approximate the saturation by the (Brooks-Corey) pressure-saturation curve θ_q with $\theta_q(p(x)) = s(x)$ and that is given by

$$\theta_q(p) := \begin{cases} \theta_m^{(q)} + (\theta_M^{(q)} - \theta_m^{(q)}) \left(\frac{p}{p_b^{(q)}} \right)^{-\lambda^{(q)}} & \text{for } p \leq p_b^{(q)}, \\ \theta_M^{(q)} & \text{for } p \geq p_b^{(q)}. \end{cases} \quad (28)$$

Here, $\theta_m^{(q)}, \theta_M^{(q)} \in [0, 1]$, $p_b^{(q)} < 0$ and $\lambda^{(q)} > 0$ are soil dependent parameters. The parameter $\theta_m^{(q)}$ denotes the residual saturation, $\theta_M^{(q)}$ the maximal saturation, $p_b^{(q)}$ the bubbling pressure and $\lambda^{(q)}$ the pore size distribution factor. The total relative permeability $kr(\theta)$ is given by

$$kr(x, \theta) := \sum_{q=1}^Q \chi_{\Omega_q}(x) kr_q(\theta),$$

where χ_{Ω_q} is the indicator function of Ω_q and $kr_q(\theta)$ is given by

$$kr_q(\theta) := \left(\frac{\theta - \theta_m^{(q)}}{\theta_M^{(q)} - \theta_m^{(q)}} \right)^{3 + \frac{2}{\lambda^{(q)}}}, \quad \text{for } \theta \in [\theta_m^{(q)}, \theta_M^{(q)}]. \quad (29)$$

The (possibly rapidly varying) absolute permeability on Ω_q is given by K_q^ε . In total, we can define $\Theta_q(p) := (kr_q \circ \theta_q)(p)$, $a^\varepsilon(x, \boldsymbol{\mu}) := \sum_{q=1}^Q \chi_{\Omega_q}(x) K_q^\varepsilon(x) \Theta_q(\boldsymbol{\mu})$ and search for p satisfying

$$-\nabla \cdot (a^\varepsilon(\cdot, p) \nabla p) = f \quad \text{in } \Omega. \quad (30)$$

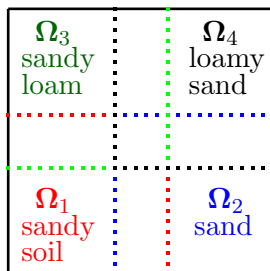


Figure 3: Illustration of the overlapping decomposition of Ω into the subdomains Ω_1 , Ω_2 , Ω_3 and Ω_4 .

Table 5: The table depicts soil parameters for different soil types. We let $\theta_m^{(q)}$ denote the residual- and $\theta_M^{(q)}$ the maximal saturation, furthermore $p_b^{(q)}$ denotes the bubbling pressure and $\lambda^{(q)}$ the pore size distribution factor. The values are taken from [51].

q	Soil type	$\theta_m^{(q)}$	$\theta_M^{(q)}$	$\lambda^{(q)}$	$p_b^{(q)}$
1	sandy soil	0.21	0.95	1.0	-0.1 [m]
2	sand	0.0458	1.0	0.694	-0.0726 [m]
3	sandy loam	0.091	1.0	0.378	-0.147 [m]
4	loamy sand	0.08	1.0	0.553	-0.087 [m]

As a specific model problem realization, we consider the stationary Richards-equation (30) with a homogeneous Dirichlet boundary condition and $f \equiv 1$ and set $\varepsilon := 0.1$. We let $\Omega :=]-1, 1[^2$ be union of the slightly overlapping subdomains $\Omega_1, \dots, \Omega_4$ that are given by

$$\begin{aligned} \Omega_1 &:= [0, 1/2 + \varepsilon] \times [0, 1/2 + \varepsilon], & \Omega_2 &:= [1/2 - \varepsilon, 1] \times [0, 1/2 + \varepsilon], \\ \Omega_3 &:= [0, 1/2 + \varepsilon] \times [1/2 - \varepsilon, 1], & \Omega_4 &:= [1/2 - \varepsilon, 1] \times [1/2 - \varepsilon, 1]. \end{aligned}$$

The domain Ω_1 is occupied by sandy soil, Ω_2 by sand, Ω_3 by sandy loam and Ω_4 by loamy sand (see Figure 3). For $q = 1, \dots, 4$, we pick $K_q^\varepsilon := a_q^\varepsilon$, where a_q^ε is given as introduced at the beginning of this section. The relative permeabilities $kr_q(\theta)$ and the water contents $\theta_q(p)$ are given according to the equations (29) and (28, where the corresponding soil parameters are stated in Table 5.

We aim to solve (30) with the RB-LOD. In the first step, we perform the offline preprocessing as described in Sections 3.1 - 3.4 for $a^\varepsilon(\cdot, p)$ as above. We note that the solution itself enters into the parameter set but fortunately only upper and lower bound are needed to set

a parameter range of *possible* pressure to proceed with the RB algorithm. The upper bound for the compact parameter set $\mathcal{D} \subset \mathbb{R}$ is naturally given by the maximum bubbling pressure (i.e. -0.0726 in our example). Theoretically, there exists no lower bound since the pressure p can fall to $-\infty$, however practically we observe that $\theta_q(p)$ converges quickly (with order $\lambda^{(q)}$) to $\theta_m^{(q)}$ (cf. [12]). Hence we can use a small negative integer for the lower bound in \mathcal{D} . In our numerical experiments we picked $\mathcal{D} := [-2, -0.0726]$ and a training set consisting of 100 randomly distributed parameters in \mathcal{D} . Larger sets (for \mathcal{D} and the training set) are possible, but not necessary in our example. The relative RB tolerance for the offline Greedy search (i.e. Step 4) was set to TOL= 0.01 for our experiments. Depending on the location, the algorithm identified between 2 and 10 relevant parameters for each coarse node $z \in \mathcal{N}_H$, before the tolerance was reached.

After assembling the local RB-LOD basis function sets and the corresponding entries for the local system matrix and the source term (i.e. the steps described in Section 3.4), we can perform the global online computation that we describe in the following. In order to solve the Richards equation we apply the Newton method. Recall that N denotes the dimension of the coarse space V_H (and hence it is also the dimension of the RB space $V_{H,k}^{\text{RB}}$). Let the initial value $\mathbf{p}_0 = (\mathbf{p}_0^1, \dots, \mathbf{p}_0^N) \in \mathbb{R}^N$ be given, where each entry \mathbf{p}_0^z is associated with a coarse node $z \in \mathcal{N}_H$ (\mathbf{z} denoting the index of z). The first online RB space $V_{H,k}^{\text{RB}}(\mathbf{p}_0)$ is assembled by using $\boldsymbol{\mu}^0(z) = \mathbf{p}_0^z$ as the online parameter in Step 6 (i.e. the online parameter is not globally fixed, but varies for each coarse node).

Assuming that the solution $\mathbf{p}_n \in \mathbb{R}^N$ of the n 'th Newton step is computed, we assemble the corresponding global RB space $V_{H,k}^{\text{RB}}(\mathbf{p}_n)$ again according to Step 6 (where \mathbf{p}_n^z is the online parameter for node z), i.e. $V_{H,k}^{\text{RB}}(\mathbf{p}_n) := \text{span}\{\Phi_z^{\text{RB}}(\mathbf{p}_n^z) \mid z \in \mathcal{N}_H\}$. With that, we define

$$p_H^{\text{RB},(n)} := \sum_{z \in \mathcal{N}_H} \mathbf{p}_n^z \Phi_z^{\text{RB}}(\mathbf{p}_n^z) \in V_{H,k}^{\text{RB}}(\mathbf{p}_n) \quad (31)$$

as the current LOD approximation. To update $p_H^{\text{RB},(n)}$ we perform the classical Newton step: find $\delta_H^{\text{RB},(n+1)} = \sum_{z \in \mathcal{N}_H} \delta_{p,n} \Phi_z^{\text{RB}}(\mathbf{p}_n^z) \in V_{H,k}^{\text{RB}}(\mathbf{p}_n)$ such that

$$\begin{aligned} & \int_{\Omega} A^\varepsilon(\cdot, p_H^{\text{RB},(n)}) \nabla \delta_H^{\text{RB},(n+1)} \cdot \nabla v + \int_{\Omega} \left(D_2 A^\varepsilon(\cdot, p_H^{\text{RB},(n)}) \nabla p_H^{\text{RB},(n)} \cdot \nabla v \right) \delta_H^{\text{RB},(n+1)} \\ &= \int_{\Omega} f v - \int_{\Omega} A^\varepsilon(\cdot, p_H^{\text{RB},(n)}) \nabla p_H^{\text{RB},(n)} \cdot \nabla v \quad \text{for all } v \in V_{H,k}^{\text{RB}}(\mathbf{p}_n) \end{aligned} \quad (32)$$

where $D_2 A^\varepsilon(\cdot, p_H^{\text{RB},(n)}) = \partial / \partial p A^\varepsilon(\cdot, p_H^{\text{RB},(n)})$. Solving the corresponding linear system gives $\delta_{p,n} \in \mathbb{R}^N$ and one can update the solution coefficient vector by

$$\mathbf{p}_{n+1} := \mathbf{p}_n + \delta_{p,n}. \quad (33)$$

The Newton algorithm stops, when the norm $\delta_{p,n}$ falls below a given tolerance. The only problem with this approach is that it requires quadrature costs in each iteration step in order to assemble the system matrix. It is not directly possible to precompute certain entries in an offline phase. However, it is possible to introduce an additional simplification. We make the following consideration.

Remark 4.1 (Numerical quadrature for $A^\varepsilon(\cdot, p_H^{\text{RB},(n)})$ and $D_2 A^\varepsilon(\cdot, p_H^{\text{RB},(n)})$). We wish to simplify equation (32) by approximating it with a numerical quadrature rule, since the entries of the global system matrix cannot be pre-computed at the moment. First, recall the definition

of $p_H^{\text{RB},(n)}$ stated in equation (31). Since $\Phi_z - \Phi_z^{\text{RB}}(\mathbf{p}_n^z) \in W_h$ we have $P_{L^2}(\Phi_z^{\text{RB}}(\mathbf{p}_n^z)) = \Phi_z$ for all time steps n and independent of \mathbf{p}_n^z . Recalling Remark 2.1, we conclude that

$$p_H^{c,(n)} := P_{L^2}(p_H^{\text{RB},(n)}) = \sum_{z \in \mathcal{N}_H} \mathbf{p}_n^z \Phi_z \in V_H$$

and hence

$$\|p_H^{c,(n)} - p_H^{\text{RB},(n)}\|_{L^2(\Omega)} \lesssim H \|p_H^{\text{RB},(n)}\|_{H^1(\Omega)},$$

where $\|p_H^{\text{RB},(n)}\|_{H^1(\Omega)}$ can typically be further bounded by data functions. Therefore we expect to make an $\mathcal{O}(H)$ -error when replacing $p_H^{\text{RB},(n)}$ by $p_H^{c,(n)}$ in the *left hand side* of equation (32), i.e.

$$\begin{aligned} & \int_{\Omega} A^\varepsilon(\cdot, p_H^{\text{RB},(n)}) \nabla \delta_H^{\text{RB},(n+1)} \cdot \nabla v + \int_{\Omega} \left(D_2 A^\varepsilon(\cdot, p_H^{\text{RB},(n)}) \nabla p_H^{\text{RB},(n)} \cdot \nabla v \right) \delta_H^{\text{RB},(n+1)} \\ & \approx \underbrace{\int_{\Omega} A^\varepsilon(\cdot, p_H^{c,(n)}) \nabla \delta_H^{\text{RB},(n+1)} \cdot \nabla v}_{=: \text{I}} + \underbrace{\int_{\Omega} \left(D_2 A^\varepsilon(\cdot, p_H^{c,(n)}) \nabla p_H^{\text{RB},(n)} \cdot \nabla v \right) \delta_H^{\text{RB},(n+1)}}_{=: \text{II}} + \mathcal{O}(H). \end{aligned}$$

Note that we are not allowed to replace $\nabla p_H^{\text{RB},(n)}$ by $\nabla p_H^{c,(n)}$. To illustrate the simplification that this substitution yields, we consider the first term I (the second term can be treated in a similar way). For $v = \Phi_y^{\text{RB}}(\mu(y)^n, \cdot)$, where $y \in \mathcal{N}_H$ by using the affine decomposition of A^ε we see that

$$\begin{aligned} & \int_{\Omega} A^\varepsilon(x, p_H^{c,(n)}(x)) \nabla \delta_H^{\text{RB},(n+1)}(x) \cdot \nabla \Phi_y^{\text{RB}}(\mathbf{p}_n^y, x) dx \\ & = \sum_{q=1}^4 \sum_{z \in \mathcal{N}_H} \delta_{p,n} \int_{\Omega} a_q^\varepsilon(x) \Theta_q(p_H^{c,(n)}(x)) \nabla \Phi_z^{\text{RB}}(\mathbf{p}_n^z, x) \cdot \nabla \Phi_y^{\text{RB}}(\mathbf{p}_n^y, x) dx \\ & \approx \sum_{q=1}^4 \sum_{z \in \mathcal{N}_H} \delta_{p,n} \Theta_q(\mathbf{p}_n^z) \int_{\Omega} a_q^\varepsilon(x) \nabla \Phi_z^{\text{RB}}(\mathbf{p}_n^z, x) \cdot \nabla \Phi_y^{\text{RB}}(\mathbf{p}_n^y, x) dx + \mathcal{O}(H |\ln(H)|). \end{aligned}$$

In the last step we used that the integrals are only integrals over $\text{supp}(\Phi_z^{\text{RB}})$, which has diameter that scales like $H |\ln(H)|$. Hence, replacing $\Theta_q(p_H^{c,(n)}(x))$ by $\Theta_q(p_H^{c,(n)}(z)) = \Theta_q(\mathbf{p}_n^z)$ is expected to only lead to an $\mathcal{O}(H |\ln(H)|)$ -error. With these quadrature-like modifications, we can precompute an approximation of term I similarly as described in (17)-(18). For the term II we can proceed the same way. In total, we can derive an approximative formulation for the left hand side in equation (32) which allows for a precomputation of global system matrix entries. For the sake of a higher accuracy, we leave the right hand side of (32) unaltered. This is unproblematic, since the local quadrature costs are cheaper and only scale linearly with the number of coarse nodes.

The subsequent results are obtained for the case *without* a numerical quadrature in the sense of Remark 4.1. The method that we used is directly based on the non-modified equations (31)-(33). However, we note that we implemented both versions of the method and the obtained results were basically the same up to small relative errors of order 10^{-4} or less. The relative tolerance for the Newton algorithm to abort was set to 10^{-5} (which is sufficiently small to not influence the order of accuracy of the method). For large enough iteration steps n (so that the Newton algorithm aborts) we denote $p_H^{\text{RB}} := p_H^{\text{RB},(n)}$ and $p_H^c := p_H^{c,(n)}$. The reference solution (i.e. the solution in the full fine scale finite element space V_h) is denoted

Table 6: *Model Problem 2. For $h = 2^{-6}$, we denote the full RB-LOD error by $e_H^{\text{RB}} := p_H^{\text{RB}} - p_h$ and the coarse part of the RB-LOD error by $e_H^c := p_H^c - p_h$. By k we denote the (fixed) localization according to Definition 2.2. The table depicts errors for various combinations of H and k .*

H	k	$\ e_H^c\ _{L^2(\Omega)}^{\text{rel}}$	$\ e_H^{\text{RB}}\ _{L^2(\Omega)}^{\text{rel}}$	$\ e_H^{\text{RB}}\ _{H^1(\Omega)}^{\text{rel}}$
2^{-2}	0	0.2523	0.2518	0.4888
2^{-2}	1	0.1177	0.0604	0.2167
2^{-2}	2	0.1164	0.0654	0.2112
2^{-2}	3	0.1163	0.0596	0.1977
2^{-3}	1	0.2958	0.2945	0.4592
2^{-3}	2	0.0497	0.0204	0.1193
2^{-3}	3	0.0494	0.0147	0.0872
2^{-4}	1	0.5212	0.5212	0.6106
2^{-4}	2	0.0327	0.0253	0.1325
2^{-4}	3	0.0222	0.0047	0.0513
2^{-4}	4	0.0220	0.0032	0.0363

Table 7: *Model Problem 2. According to the classical result stated in Proposition 2.3 we couple k and H by $k = k(H) := \lfloor |\ln(H)| + 0.5 \rfloor$ to recover the typical convergence rates. The full RB-LOD error is given by $e_H^{\text{RB}} := p_H^{\text{RB}} - p_h$ and the coarse part by $e_H^c := p_H^c - p_h$. For each of the errors $\|e_H\|$ below (for $H = 2^{-i}$), we define the average EOC by $\text{EOC} := \frac{1}{2} \sum_{i=1}^2 \log_2(\|e_{2^{-i}}\| / \|e_{2^{-(i+1)}}\|) / \log_2(2)$.*

H	$k(H)$	$\ e_H^c\ _{L^2(\Omega)}^{\text{rel}}$	$\ e_H^{\text{RB}}\ _{L^2(\Omega)}^{\text{rel}}$	$\ e_H^{\text{RB}}\ _{H^1(\Omega)}^{\text{rel}}$
2^{-2}	1	0.1177	0.0604	0.2167
2^{-3}	2	0.0497	0.0204	0.1193
2^{-4}	3	0.0222	0.0047	0.0513
EOC		1.203	1.842	1.039

by p_h . The corresponding errors are depicted in Table 6. We see that the RB strategy still preserves the behavior of the classical method. We get a fast decay in terms of the localization parameter k and if we couple H and k according to Proposition 2.3 we also recover the classical convergence rates (see Table 7).

Table 8: *Model Problem 2. The table depicts various CPU times.*

H	k	$t_{\text{average}}^{\text{off, local}}$	$t_{\text{average}}^{\text{on, local}}$	$t_{\text{average}}^{\text{on, global}}$
2^{-2}	2	78.15 [s]	0.036 [s]	0.003 [s]
2^{-3}	2	19.12 [s]	0.039 [s]	0.003 [s]
2^{-4}	2	4.71 [s]	0.022 [s]	0.004 [s]

Table 8 shows that the main computational costs for solving the local problems takes place in the offline phase. Once the the local problems are solved, the computation of the

RB-LOD basis functions in the online phase (for a given iteration step or a new source term) is very fast. The time for computing an online RB-LOD basis function for a given coarse node is of order 0.03 seconds and hence very small. The term $t_{\text{average}}^{\text{on, local}}$ in Table 8 denotes the time that is required for solving one local problem in the online phase where the average is taken over all nodes and all iteration steps. The offline time is much higher (depending on the resolution of the coarse mesh) but can be further parallelized depending on the number of available CPUs. The more CPUs that we can use for distributing the computations, the cheaper the method.

Conclusion. In this work we proposed a new method for tackling parametrized and non-linear multiscale problems in an efficient way. We combined the LOD method with a model reduction strategy to construct localized reduced basis functions. After an offline preprocessing step, these locally supported basis functions can be computed with very low computational costs for any new parameter. The space that is spanned by the functions is low dimensional and yields high approximation properties. The applicability of the RB-LOD was demonstrated in numerical experiments for linear and nonlinear problems.

Acknowledgment. This work was supported in part by the Swiss National Science Foundation under Grant 200021 134716.

References

- [1] A. Abdulle. On a priori error analysis of fully discrete heterogeneous multiscale FEM. *Multiscale Model. Simul.*, 4(2):447–459, 2005.
- [2] A. Abdulle. The finite element heterogeneous multiscale method: a computational strategy for multiscale PDEs. In *Multiple scales problems in biomathematics, mechanics, physics and numerics*, volume 31 of *GAKUTO Internat. Ser. Math. Sci. Appl.*, pages 133–181. Gakkōtoshō, Tokyo, 2009.
- [3] A. Abdulle and Y. Bai. Reduced basis finite element heterogeneous multiscale method for high-order discretizations of elliptic homogenization problems. *J. Comput. Phys.*, 231(21):7014–7036, 2012.
- [4] A. Abdulle and Y. Bai. Adaptive reduced basis finite element heterogeneous multiscale method. *Comput. Methods Appl. Mech. Engrg.*, 257:201–220, 2013.
- [5] A. Abdulle and Y. Bai. Reduced order modelling numerical homogenization. *Philos. Trans. R. Soc. Lond. Ser. A Math. Phys. Eng. Sci.*, 372(6):20130388, 2014.
- [6] A. Abdulle, Y. Bai, and G. Vilmart. An offline-online homogenization strategy to solve quasilinear two-scale problems at the cost of one-scale problems. *Internat. J. Numer. Methods Engrg.*, 99(7):469–486, 2014.
- [7] A. Abdulle and P. Henning. Localized orthogonal decomposition method for the wave equation with a continuum of scales. ArXiv e-print 1406.6325, 2014.
- [8] F. Albrecht, B. Haasdonk, S. Kaulmann, and M. Ohlberger. The localized reduced basis multiscale method. In *Algoritmy 2012. 19th conference on scientific computing, Vysoké Tatry, Podbanské, Slovakia, September 9–14, 2012. Proceedings of contributed papers and posters.*, pages 393–403. Bratislava: Slovak University of Technology, Faculty of Civil Engineering, Department of Mathematics and Descriptive Geometry, 2012.

- [9] I. Babuška and R. Lipton. L2-global to local projection an approach to multiscale analysis. *Math. Models and Meth. in Appl. Science*, 21:2211–2226, 2011.
- [10] I. Babuška and R. Lipton. Optimal local approximation spaces for generalized finite element methods with application to multiscale problems. *Multiscale Model. Simul.*, 9:373–406, 2011.
- [11] M. Barrault, Y. Maday, N.-C. Nguyen, and A. T. Patera. An ‘empirical interpolation method’: Application to efficient reduced-basis discretization of partial differential equations. *C. R. Math. Acad. Sci. Paris, Ser.I* 339:667–672, 2004.
- [12] H. Berninger, R. Kornhuber, and O. Sander. Fast and robust numerical solution of the Richards equation in homogeneous soil. *SIAM J. Numer. Anal.*, 49(6):2576–2597, 2011.
- [13] S. Boyaval. Reduced-basis approach for homogenization beyond the periodic setting. *Multiscale Model. Simul.*, 7(1):466–494, 2008.
- [14] S. Boyaval. *Mathematical modeling and simulation for material science*. PhD thesis, University Paris Est, 2009.
- [15] F. Brezzi, L. P. Franca, T. J. R. Hughes, and A. Russo. $b = \int g$. *Comput. Methods Appl. Mech. Engrg.*, 145(3-4):329–339, 1997.
- [16] R. H. Brooks and A. T. Corey. Hydraulic properties of porous media. *Hydrol. Pap.*, 4, 1964. Colo. State Univ., Fort Collins.
- [17] A. Buffa, Y. Maday, A. T. Patera, C. Prud’homme, and G. Turinici. A priori convergence of the greedy algorithm for the parametrized reduced basis. *ESAIM Math. Model. Numer. Anal.*, 46:595–603, 2012.
- [18] C. Carstensen. Quasi-interpolation and a posteriori error analysis in finite element methods. *M2AN Math. Model. Numer. Anal.*, 33(6):1187–1202, 1999.
- [19] W. E and B. Engquist. The heterogeneous multiscale methods. *Commun. Math. Sci.*, 1(1):87–132, 2003.
- [20] Y. Efendiev, J. Galvis, and T. Y. Hou. Generalized multiscale finite element methods (gmsfem). *J. Comput. Physics*, 251:116135, 2013.
- [21] D. Elfverson, V. Ginting, and P. Henning. On multiscale methods in Petrov-Galerkin formulation. ArXiv e-print 1405.5758, 2014.
- [22] W. R. Gardner. Some steady state solutions of unsaturated moisture flow equations with application to evaporation from a water table. *Soil Sci.*, 85:228232, 1958.
- [23] A. Gloria. An analytical framework for the numerical homogenization of monotone elliptic operators and quasiconvex energies. *Multiscale Model. Simul.*, 5(3):996–1043 (electronic), 2006.
- [24] A. Gloria. Reduction of the resonance error. Part 1: Approximation of homogenized coefficients. *Math. Models Methods Appl. Sci.*, 21(8):1601–1630, 2011.
- [25] L. Grasedyck, I. Greff, and S. Sauter. The AL basis for the solution of elliptic problems in heterogeneous media. *Multiscale Model. Simul.*, 10(1):245–258, 2012.

- [26] M. A. Grepl, N. C. Nguyen, K. Veroy, A. T. Patera, and G. R. Liu. Certified rapid solution of partial differential equations for real-time parameter estimation and optimization. In *Real-time PDE-constrained optimization*, volume 3 of *Comput. Sci. Eng.*, pages 199–216. SIAM, Philadelphia, PA, 2007.
- [27] P. Henning and A. Målqvist. Localized orthogonal decomposition techniques for boundary value problems. *SIAM J. Sci. Comput.*, 36(4):A1609–A1634, 2014.
- [28] P. Henning, A. Målqvist, and D. Peterseim. A localized orthogonal decomposition method for semi-linear elliptic problems. *ESAIM Math. Model. Numer. Anal.*, 48(5):1331–1349, 2014.
- [29] P. Henning, A. Målqvist, and D. Peterseim. Two-Level Discretization Techniques for Ground State Computations of Bose-Einstein Condensates. *SIAM J. Numer. Anal.*, 52(4):1525–1550, 2014.
- [30] P. Henning, P. Morgenstern, and D. Peterseim. Multiscale partition of unity. ArXiv e-print 1312.5922, to appear in "Meshfree Methods for Partial Differential Equations VII", vol 100 of "Lecture Notes in Computational Science and Engineering", 2013.
- [31] P. Henning and D. Peterseim. Oversampling for the Multiscale Finite Element Method. *Multiscale Model. Simul.*, 11(4):1149–1175, 2013.
- [32] T. Y. Hou and X.-H. Wu. A multiscale finite element method for elliptic problems in composite materials and porous media. *J. Comput. Phys.*, 134(1):169–189, 1997.
- [33] T. Y. Hou, X.-H. Wu, and Z. Cai. Convergence of a multiscale finite element method for elliptic problems with rapidly oscillating coefficients. *Math. Comp.*, 68(227):913–943, 1999.
- [34] T. J. R. Hughes. Multiscale phenomena: Green's functions, the Dirichlet-to-Neumann formulation, subgrid scale models, bubbles and the origins of stabilized methods. *Comput. Methods Appl. Mech. Engrg.*, 127(1-4):387–401, 1995.
- [35] T. J. R. Hughes, G. R. Feijóo, L. Mazzei, and J.-B. Quincy. The variational multiscale method—a paradigm for computational mechanics. *Comput. Methods Appl. Mech. Engrg.*, 166(1-2):3–24, 1998.
- [36] I. T. Jolliffe. *Principal component analysis*. Springer Series in Statistics. Springer-Verlag, New York, 1986.
- [37] S. Kaulmann, B. Flemisch, B. Haasdonk, K.-A. Lie, and M. Ohlberger. The localized reduced basis multiscale method for two-phase flows in porous media. ArXiv e-print 1405.2810, 2014.
- [38] S. Kaulmann, M. Ohlberger, and B. Haasdonk. A new local reduced basis discontinuous Galerkin approach for heterogeneous multiscale problems. *C. R. Math. Acad. Sci. Paris*, 349(23-24):1233–1238, 2011.
- [39] L. Machiels, Y. Maday, I. B. Oliveira, A. T. Patera, and D. V. Rovas. Output bounds for reduced-basis approximations of symmetric positive definite eigenvalue problems. *C. R. Acad. Sci. Paris Sér. I Math.*, 331(2):153–158, 2000.
- [40] A. Målqvist. Multiscale methods for elliptic problems. *Multiscale Model. Simul.*, 9(3):1064–1086, 2011.

- [41] A. Målqvist and D. Peterseim. Localization of elliptic multiscale problems. *Math. Comp.*, 83(290):2583–2603, 2014.
- [42] N.-C. Nguyen. A multiscale reduced-basis method for parametrized elliptic partial differential equations with multiple scales. *J. Comput. Phys.*, 227:9807–9822, 2008.
- [43] M. Ohlberger and M. Schaefer. A reduced basis method for parameter optimization of multiscale problems. In *Algoritmy 2012. 19th conference on scientific computing, Vysoké Tatry, Podbanské, Slovakia, September 9–14, 2012. Proceedings of contributed papers and posters.*, pages 272–281. Bratislava: Slovak University of Technology, Faculty of Civil Engineering, Department of Mathematics and Descriptive Geometry, 2012.
- [44] M. Ohlberger and F. Schindler. A-posteriori error estimates for the localized reduced basis multi-scale method. In J. Fuhrmann, M. Ohlberger, and C. Rohde, editors, *Finite Volumes for Complex Applications VII-Methods and Theoretical Aspects*, volume 77 of *Springer Proceedings in Mathematics & Statistics*, pages 421–429. Springer International Publishing, may 2014.
- [45] H. Owhadi and L. Zhang. Localized bases for finite-dimensional homogenization approximations with nonseparated scales and high contrast. *Multiscale Model. Simul.*, 9(4):1373–1398, 2011.
- [46] H. Owhadi, L. Zhang, and L. Berlyand. Polyharmonic homogenization, rough polyharmonic splines and sparse super-localization. *M2AN Math. Model. Numer. Anal. (eFirst)*, 2013.
- [47] A. T. Patera and G. Rozza. Reduced basis approximation and a posteriori error estimation for parametrized partial differential equations, 2007.
- [48] C. Prud’homme, D. V. Rovas, K. Veroy, L. Machiels, Y. Maday, A. T. Patera, and G. Turinici. Reliable real-time solution of parametrized partial differential equations: Reduced-basis output bounds methods. *J. Fluids Eng.*, 124:70–80, 2002.
- [49] C. Prud’homme, D. V. Rovas, K. Veroy, and A. T. Patera. A mathematical and computational framework for reliable real-time solution of parametrized partial differential equations. *M2AN Math. Model. Numer. Anal.*, 36(5):747–771, 2002. Programming.
- [50] S. S. Ravindran. A reduced-order approach for optimal control of fluids using proper orthogonal decomposition. *Internat. J. Numer. Methods Fluids*, 34(5):425–448, 2000.
- [51] W. J. Rawls, L. R. Ahuja, D. L. Brakensiek, and A. Shirmohammadi. Infiltration and soil water movement. In D. R. Maidment, editor, *Handbook of Hydrology*, chapter 5, pages 1–51. McGraw-Hill, Inc., New York, N.Y., 1993.
- [52] G. Rozza, D. B. P. Huynh, and A. T. Patera. Reduced basis approximation and a posteriori error estimation for affinely parametrized elliptic coercive partial differential equations. *Arch. Comput. Methods. Eng.*, 15:229–275, 2008.
- [53] L. Sirovich. Turbulence and the dynamics of coherent structures. I. Coherent structures. *Quart. Appl. Math.*, 45(3):561–571, 1987.
- [54] M. T. van Genuchten. A closedform equation for predicting the hydraulic conductivity of unsaturated soils. *Soil Sci. Soc. Am. J.*, 44:892898, 1980.

Recent publications:

MATHEMATICS INSTITUTE OF COMPUTATIONAL SCIENCE AND ENGINEERING
Section of Mathematics
Ecole Polytechnique Fédérale
CH-1015 Lausanne

- 30.2014** DANIEL KRESSNER, ANDRÉ USCHMAJEW:
On low-rank approximability of solutions to high-dimensional operator equations and eigenvalue problems
- 31.2014** ASSYR ABDULLE, MARTIN HUBER:
Finite element heterogeneous multiscale method for nonlinear monotone parabolic homogenization problems
- 32.2014** ASSYR ABDULLE, MARTIN HUBER, GILLES VILMART:
Linearized numerical homogenization method for nonlinear monotone parabolic multiscale problems
- 33.2014** MARCO DISCACCIATI, PAOLA GERVASIO, ALFIO QUARTERONI:
Interface control domain decomposition (ICDD) methods for heterogeneous problems
- 34.2014** ANDRE USCHMAJEW:
A new convergence proof for the high-order power method and generalizations
- 35.2014** ASSYR ABDULLE, ONDREJ BUDÁČ:
A Petrov-Galerkin reduced basis approximation of the Stokes equation in parametrized geometries
- 36.2014** ASSYR ABDULLE, MARTIN E. HUBER:
Error estimates for finite element approximations of nonlinear monotone elliptic problems with application to numerical homogenization
- 37.2014** LARS KARLSSON, DANIEL KRESSNER, ANDRÉ USCHMAJEW:
Parallel algorithms for tensor completion in the CP format
- 38.2014** PAOLO TRICERRI, LUCA DEDÈ, SIMONE DEPARIS, ALFIO QUARTERONI, ANNE M. ROBERTSON, ADÉLIA SEQUEIRA:
Fluid-structure interaction simulations of cerebral arteries modeled by isotropic and anisotropic constitutive laws
- 39.2014** FRANCESCA BONIZZONI, FABIO NOBILE, DANIEL KRESSNER:
Tensor train approximation of moment equations for the log-normal Darcy problem
- 40.2014** DIANE GUIGNARD, FABIO NOBILE, MARCO PICASSO:
A posteriori error estimations for elliptic partial differential equations with small uncertainties
- 41.2014** FABIO NOBILE, LORENZO TAMELLINI, RAÚL TEMPONE:
Comparison of Clenshaw-Curtis and Leja quasi-optimal sparse grids for the approximation of random PDEs
- 42.2014** ASSYR ABDULLE, PATRICK HENNING:
A reduced basis localized orthogonal decomposition