

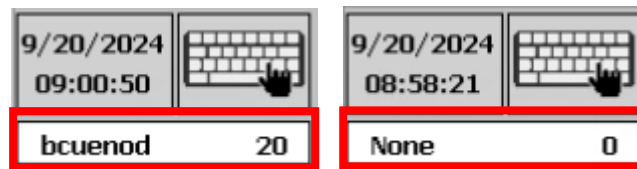
User Manual

Evaporator SyrusPro 700 LT

Bühler

1. Connect to the operator account (1 minute)

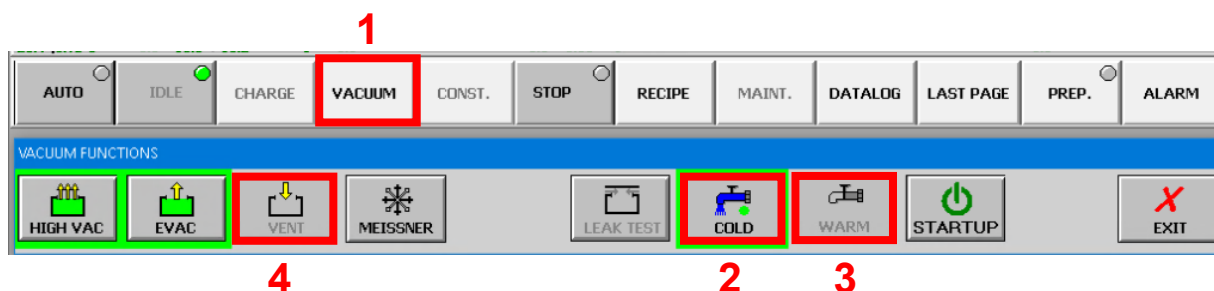
- a) Logon on the access control system CAE on the zone computer
- b) On the tool computer, click on the login bar on the top right. Either “None” or the precedent username is shown.



- c) On the pop-up window, click on the username and type yours. **Validate it by clicking on Enter!**
- d) Same for the password. **The password is never shown on the screen.**

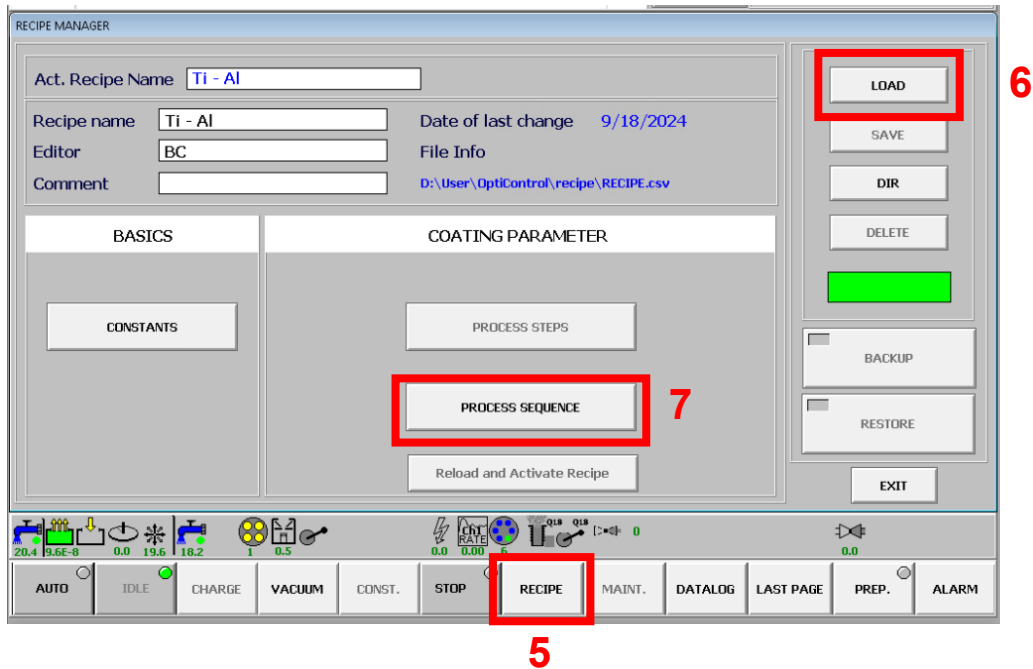
2. Vent the chamber (15 minutes)

- e) On the bottom bar, click on *Vacuum* (1). The vacuum functions bar appears.
- f) Turn off the cold water (2), wait 5 seconds and turn on the warm water (3).
- g) Click on *Vent* (4). It will take approximately 15 minutes.

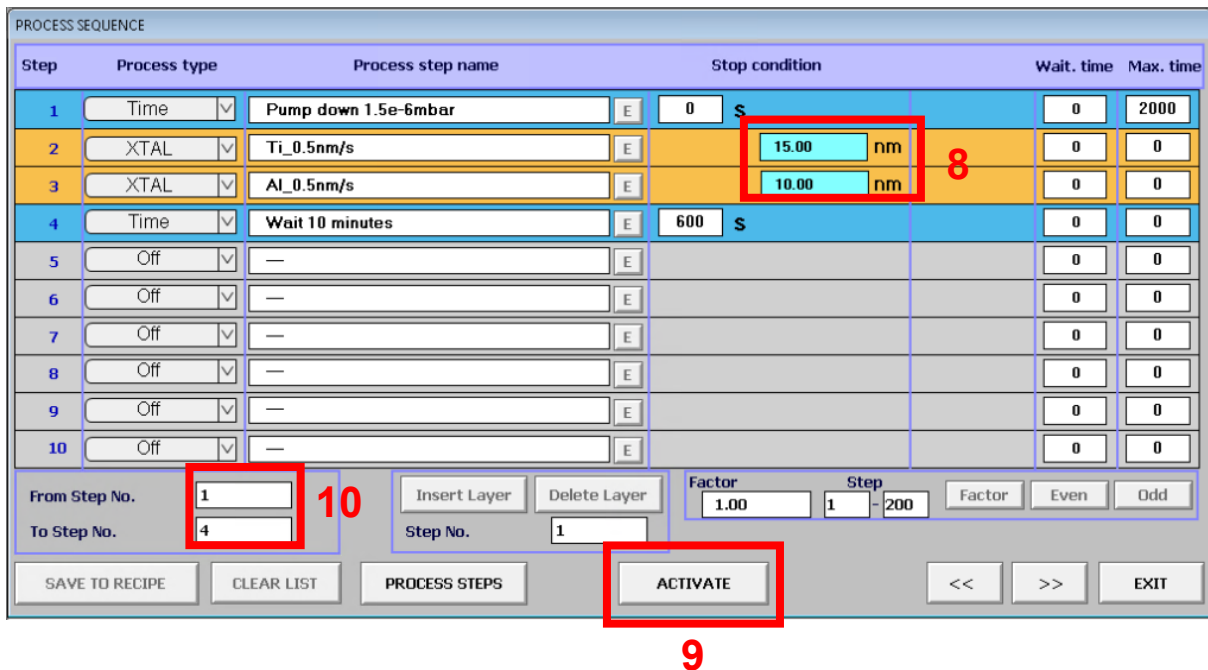


3. Prepare the recipe and the samples

- h) On the bottom bar, click on *Recipe* (5).
- i) Load your recipe with the *Load* button (6) on the top right.
- j) Click on *Process Sequence* (7)



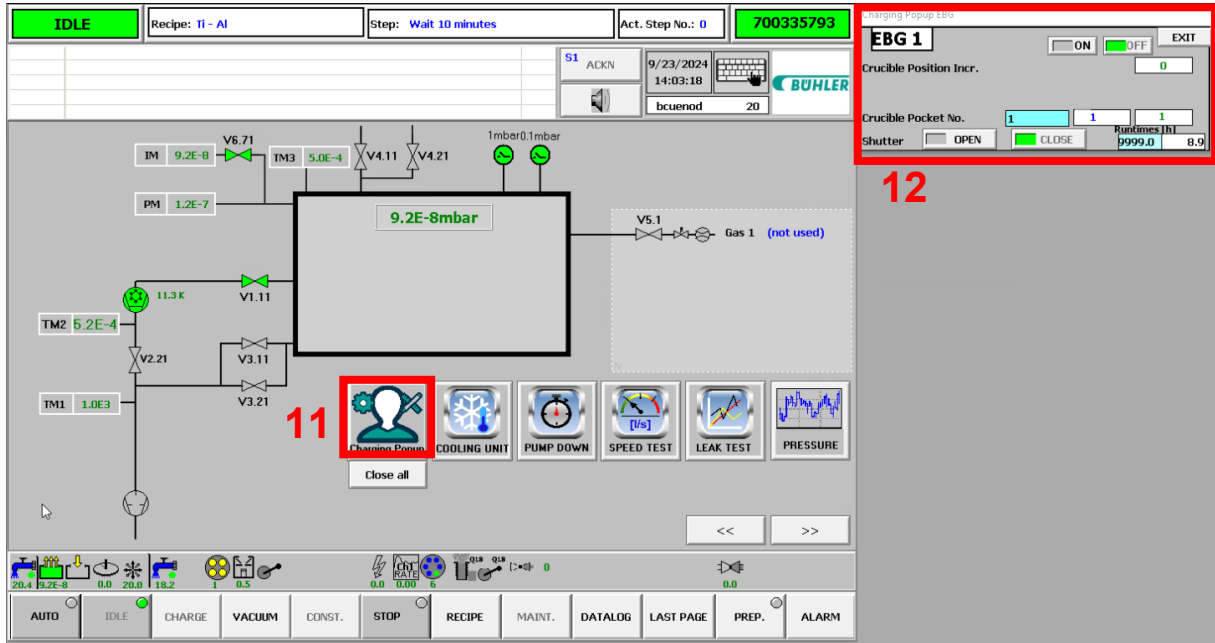
k) Set the thicknesses (8) and **CLICK ON ACTIVATE** (9). Double check the active steps are correct (It should start at one!) (10).



4. Loading the samples and crucibles check

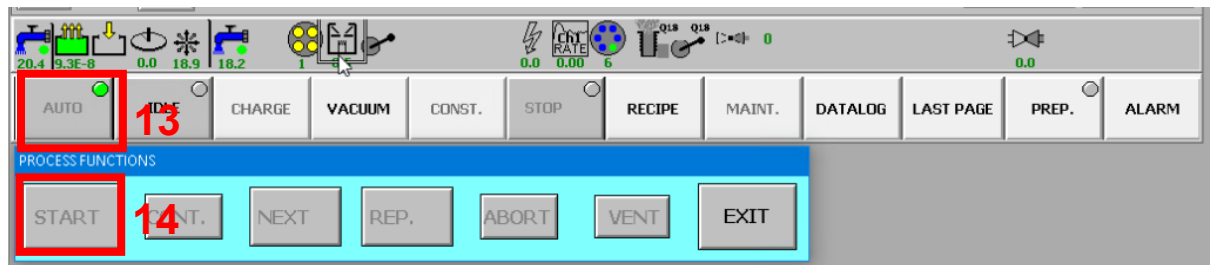
l) Once the chamber is vented, the door will slightly open. Open it fully by turning the handle.

- m) Load your samples on the segments. Fill the unused segments with the blank holders. Don't hesitate to use the step ladder to comfortably access the segments.
- n) On the synoptic page, click on *Charging Popup* (11). The pop-up window *EBG 1* appears (12). In the blue bar, enter the number of the crucible that will be used. On the front panel, start the crucible rotation by continuously pressing on the *Crucible EBG 1* button. The carousel will stop on the corresponding crucible. **Check the level, the state and which material is loaded.** Repeat the procedure for each crucible used in your recipe.



5. Run the recipe

- o) Control that the O-ring is clean. Close the door and **the lock it with the handle up.**
- p) On the front panel, click on the blue *Release Evacuation* button. The blue light should turn-off.
- q) On the HMI, click on *Auto* (13) and on *Start* (14) on the *Process Functions* popup.



- r) The pump-down is now starting. **Wait for the secondary pumping to start before leaving the tool.**

6. End of process

- s) At the end of the process, the tool will remain under vacuum in idle mode. Vent the tool as described in the section 2. *Vent the chamber (15 minutes)*.
- t) Unload your samples. **Warning! The substrates holder might be hot!**
- u) If the next user is not here, pump-down the chamber. Close the door and click on the *Release Evacuation* button on the front panel. On the HMI, click on the *VACUUM* button and on the *EVAC* button. Turn off the warm water and turn on the cold water.

Wait for the secondary pumping to start.

- v) Log out on the HMI and on the CAE computer.

7. FAQ and Troubleshooting.

7.1. Venting button is disabled

- 1) You have to be connected on the CAE to release the venting button in idle mode.
- 2) The recipe is not finished. After the evaporation, there is a 10 minutes timer to allow the crucibles to cool down.

7.2. Start button is disabled.

- 1) You can only start a recipe from the atmospheric pressure. The pump-down step is part of the recipe.

7.3. I can't type my password

- 1) Yes, you can. It is just not showing on the screen.