

The Landscapes of Paris

Exploring future issues and challenges through a city and its imaginaries

Design Studio Viganò
Fall 2024 - BA5/MA1



Paola Viganò
with
Ada Massarente
Ben Gitai
Noémie Lecoanet

Juxtaposition of maps from the Atlas, participatory workshop with residents, December 2022, Ben Gitai -HRC.

Themes, context and hypothesis



Nager dans la Seine, le grand défi des Jeux Olympiques 2024. Photograph by Bertrand Guay—
AFP/Getty Images. Le Pèlerin, August 2023.

Theoretical frame, context & hypothesis

The Atlas of Landscape of Paris

Exhibition in the Pavillion de l’Arsenal in Paris

The themes

Paris Imaginaires

Paris Sort/Métabolique

Paris Change

Paris Vivant

An Atlas and its issues

The Landscape structures and challenges

The Landscape entities

The Landscape elements

The Landscape unities

Teaching methods and program

Theoretical frame, context & hypothesis

The Atlas of Landscape of Paris

Exhibition in the Pavillion de l’Arsenal in Paris

The themes

Paris Imaginaires

Paris Sort/Métabolique

Paris Change

Paris Vivant

An Atlas and its issues

The Landscape structures and challenges

The Landscape entities

The Landscape elements

The Landscape unities

Teaching methods and program

Theoretical frame



Subjected to a multitude of pressures and socio-eco-political issues, cities are now looking for tools capable of ensuring the sustainability and innovation of their living conditions. **The Atlas of Paris' landscapes presents a unique opportunity to read and design the contemporary condition of metropolises in the era of climate change and social tensions.**

Investigating urban and natural landscapes involves multiple gazes of users, inhabitants, tourists and works as a levee to enlarge any disciplinary gaze, to construct inclusive dialogues between the different parts (expert/non expert; human/non-human).

It might open to a novel approach to the urban future.

The design studio will therefore focus on the Paris landscape(s), and their relationships to the ever-increasing risks and threats facing the metropolis.

In fact, **urban and natural landscape structures, sometimes weak and discreet, must be considered at their true value** to be reinterpreted and re-imagined at a time of socio-ecological Transition.

Context:
A new urban landscape of Paris

What will the city be
like in the near future?
How will we be living
in it? What do we
expect from it?



Habitat
H

Research
R

Center
C

Landscapes is dynamic: it is on the basis of the environmental history of the Parisian territory that we can build an understanding of Paris, by bringing together the long history and contemporary features of its heterogeneous landscapes.

**Un Atlas de paysages
pour la Ville de Paris**

“Landscape is a part of a territory, as perceived by local inhabitants or visitors, which changes over time as a result of natural forces and human action”

European Landscape Convention (Florence, 2000)

The interpretive journey HRC-EPFL team has been following for almost two years is guided first and foremost by the idea of landscape conveyed by the European Landscape Convention: a definition that is eminently cultural and rooted in the multiple points of view that reveal it. It has opened many different paths around the **issues of coexistence and adaptation** (climate, social, landscapes issues).

Hypothesis

The Paris Atlas team has always examined the various dimensions of the landscape, which vary greatly in nature, in the light of the changes that the city of Paris has already undergone in recent years. This initial research has given rise to the hypothesis of landscape units - units in which the geomorphological base of Paris meets the variety of settlements and landscapes - as well as to a reading of the Parisian urban fabric constructed by the delimitation of entities. These entities, provisionally called “villages”, are ways of breaking down the current imaginary of Paris as a metropolis, and can be perceived in several ways: historically, sociologically, morphologically and metaphorically.

Theoretical frame, context & hypothesis

The Atlas of Landscape of Paris

Exhibition in the Pavillion de l'Arsenal in Paris

The themes

Paris Imaginaires

Paris Sort/Métabolique

Paris Change

Paris Vivant

An Atlas and its issues

The Landscape structures and challenges

The Landscape entities

The Landscape elements

The Landscape unities

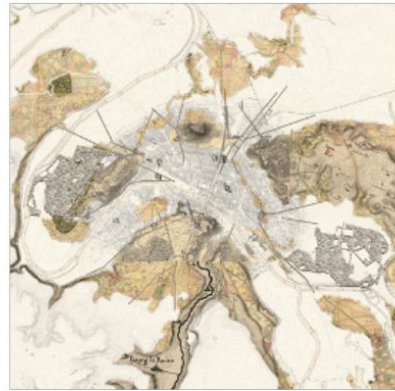
Teaching methods and program

The Themes

Paris Imaginaires



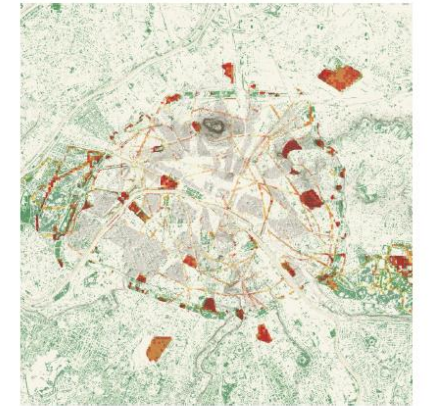
Paris sort / Métabolique



Paris Change



Paris Vivant



"For me, Paris is not an object with a thousand facets, a sum of perceptions, nor indeed the law of all these perceptions... each express perception of my journey through Paris - the cafés, the faces of the people, the poplars on the quays, the bends in the Seine - is cut out of the total being of Paris...".

Maurice Merleau-Ponty (1945 : 325).

The Themes

Paris Imaginaires: The city as seen by its inhabitants, readers and visitors



Julien Green, Paris, 1983



Jean Cocteau, Paris, 2013



Virginie Despentes, Vernon Subutex, 2017



Eric Hazan, L'invention de Paris, 2002



Eric Hazan, Le Tumulte de Paris, 2021



Jean-Christophe Bailly, Paris quand-même, 2022



Jacques Yonnet, Rue des Maléfices, 1954 (1987)

Paris Workshop, 2 December 2022.
Cross-mapping data, the Landscape atlas of Paris., HRC 2023© SOS météores, Edgar .P. Jacobs, Collection Lombard ,1959.



Theoretical frame, context & hypothesis

The Atlas of Landscape of Paris

Exhibition in the Pavillion de l’Arsenal in Paris

The themes

Paris Imaginaires

Paris Sort/Métabolique

Paris Change

Paris Vivant

An Atlas and its issues

The Landscape structures and challenges

The Landscape entities

The Landscape elements

The Landscape unities

Teaching methods and program

An Atlas and its issues

The landscape structures and challenges



The Périphérique (ring road)

The Seine river

The boulevards

The parc system

The monuments system

The Périphérique (ring road) no longer perceived like La a « Zone », it's a changing beltway where sports complexes and pieces of contemporary architecture are concentrated. porosity / traversability / The gates become places of continuity and new opportunities for centralities between villages. What about traffic? noise pollution, air quality, quality of life, pollution What about the tertiary sector adjacent to the ring road? Its architectural development is not affected by the new PLU directives (no height limits) and its existence creates an obvious boundary between Paris and the adjacent communes Linear forest: a vision for the Périphérique.

The landscape structure map of Paris. The Atlas of landscape, HRC 2023

An Atlas and its issues

The landscape structure and challenges



The ring road
The Seine river
The boulevards
The parc system
The monuments system

Drought - faces of flowerbeds and lawns,
monocultures, endangered species, heat island
biodiversity cool accessibility: island courtyards,
public accessibility - courtyards added to **landscape**
structure uses and open spaces

The future public space in front
of the Town hall in Paris
Atlas de paysages de Paris,
Apur Lexigon- HRC, EPFL

An Atlas and its issues

The landscape entities and challenges

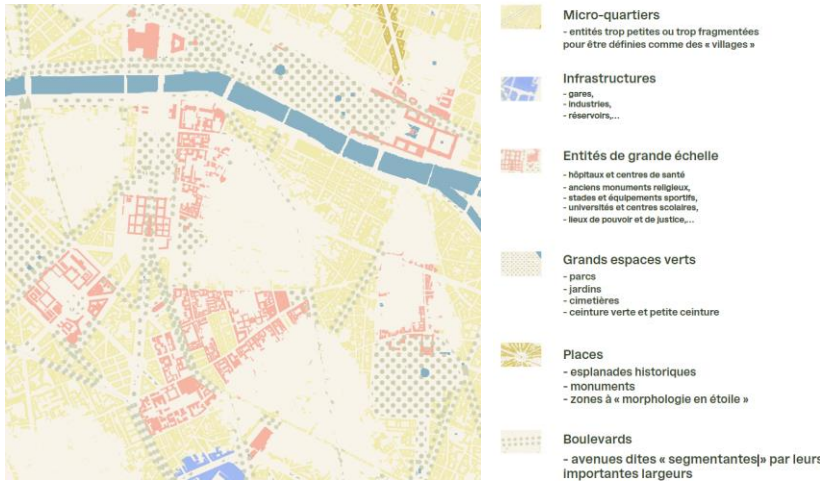


The Inter-village map of Paris. The Atlas of landscape, HRC 2023

The Villages

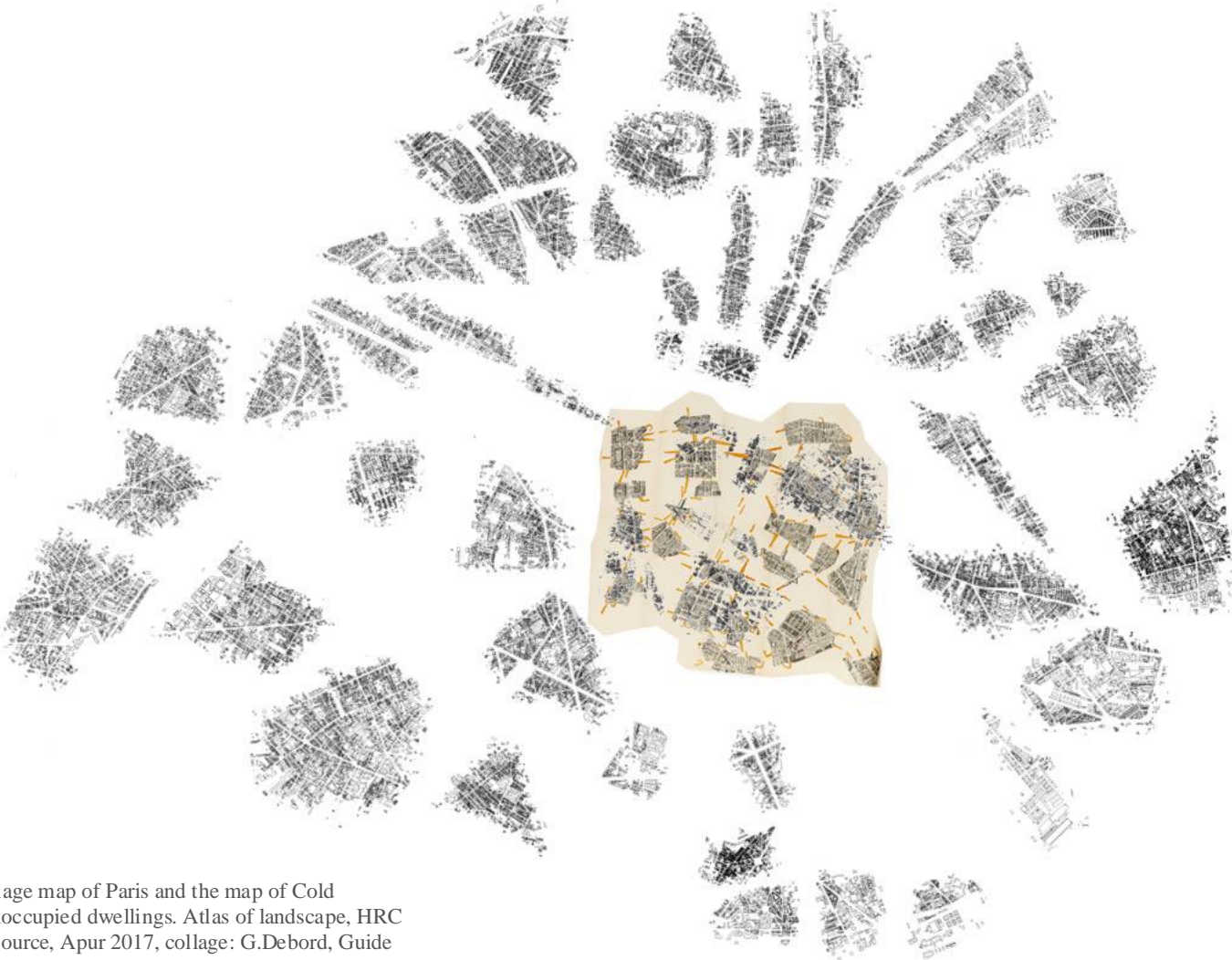
The Metropolitan Common

Villages and inter-villages hospitable qualities of landscapes, which are why we use the term "villages lits chauds / lits froids" (hot-bed / cold-bed villages). It's hard to call entities in the center of Paris "village", probably due to hyper-tourism and over-consumption. There's no longer any community life in these places, because it's Disneyland. > What does the bioclimatic PLU say? Differentiation or homogenization? Gentrification, social mixing, separation of populations and disappearance of schools. Rejection of middle-class and poorer populations



An Atlas and its issues

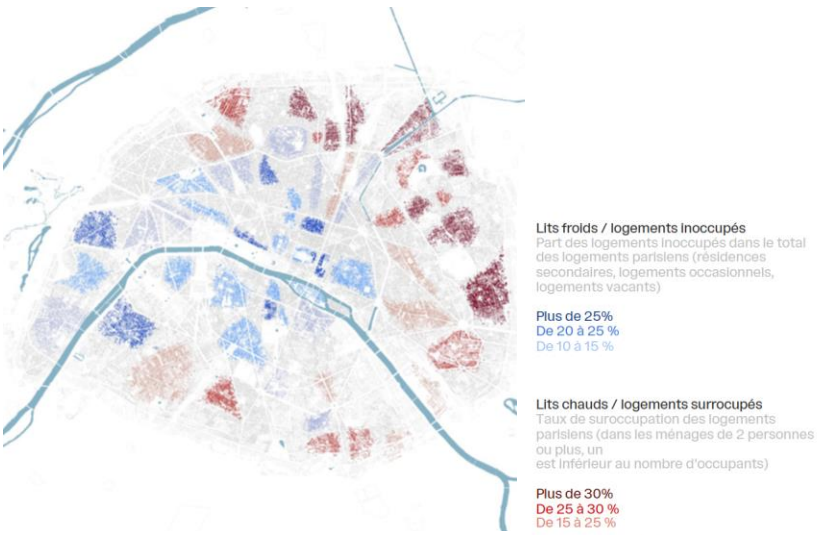
The landscape entities and challenges



The Villages

The Metropolitan Common

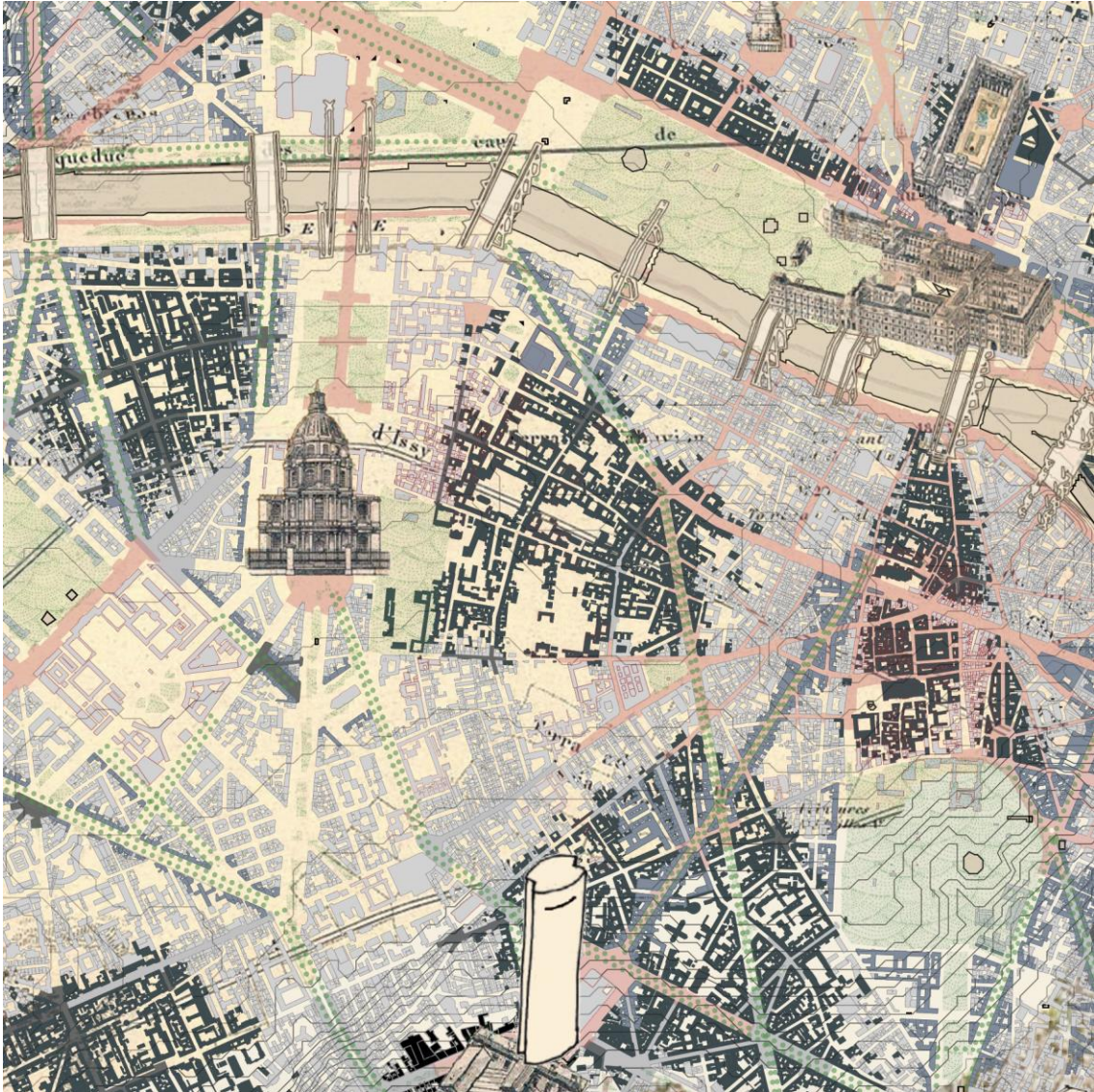
The centrality of the **village** as a spatial, social and historical entity derives from its multiple paths, its geomorphology and culture, but even more, from its contemporary relevance. Villages are physical entities and metaphorical places of the metropolis, today partially absorbed by the logic of global and local gentrification processes.



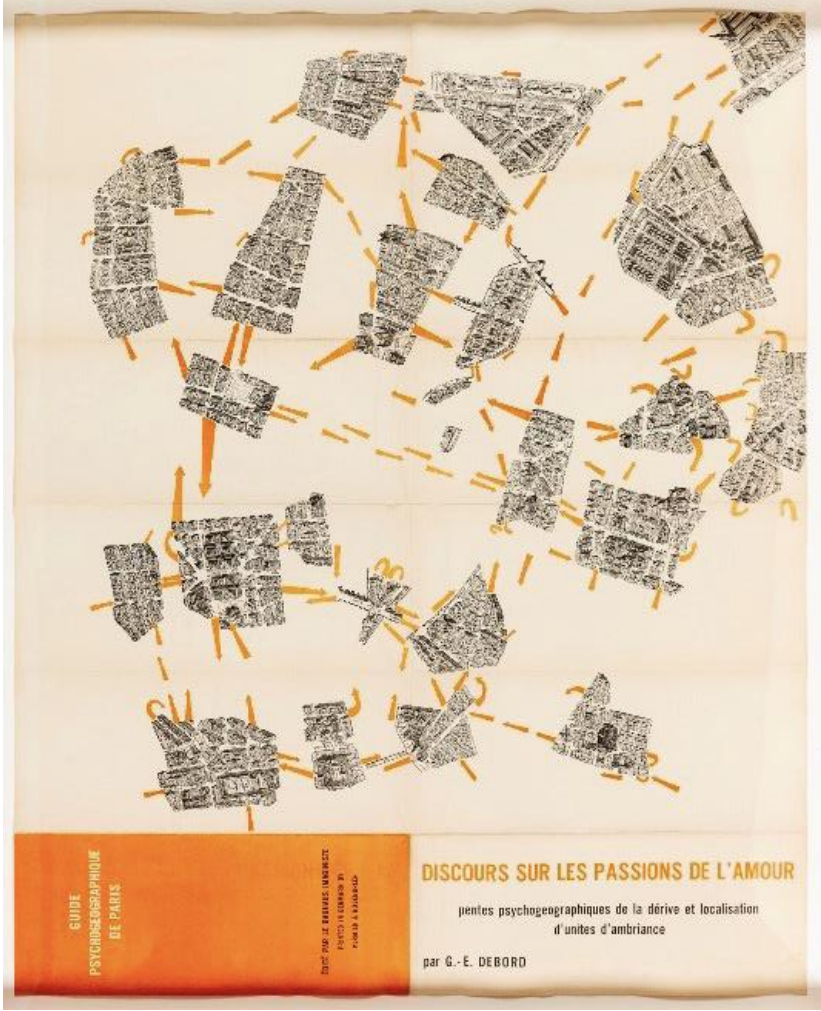
The village map of Paris and the map of Cold beds/unoccupied dwellings. Atlas of landscape, HRC 2023. Source, Apur 2017, collage: G.Debord, Guide psychogéographique de Paris, Discours sur les passions de l'Amour, 1957.

An Atlas and its issues

The landscape entities and challenges



The Villages The Metropolitan Common



An Atlas and its issues

The landscape elements and challenges

Ponts



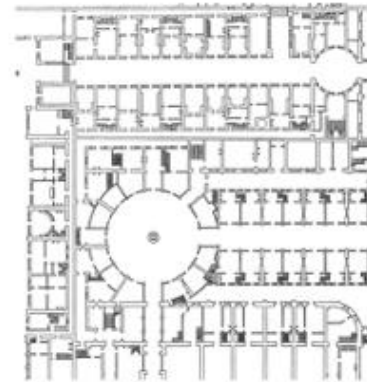
Espace verts



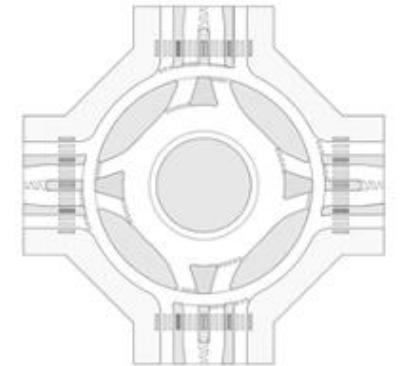
Fortifications



Passages



Sols et matérialité



The concept of 'difference' is associated with the work of Gilles Deleuze, who maintains that difference is the fundamental reality and that everything is a product of difference. On the other hand, the term 'repetition' refers to the act or process of repeating elements. The use of recurring elements, such as motifs or spatial structures, creates a sense of unity and coherence. The concept of repetition is associated with the work of Friedrich Nietzsche, who argued that repetition is a fundamental aspect of human existence and that we constantly repeat certain actions and thoughts in order to find meaning in our daily lives.

An Atlas and its issues

The landscape elements and challenges

The Seine crosses Paris from east to west over 13 km and has 37 bridges and footbridges=> $13:37=0.35\text{km}$ ratio of distance between bridges / 2.85 bridges per 1km.

potential for greening the banks of the river which were made to crossed and not to be common ground // tension created between metropolitan practices and the naturalization of the river



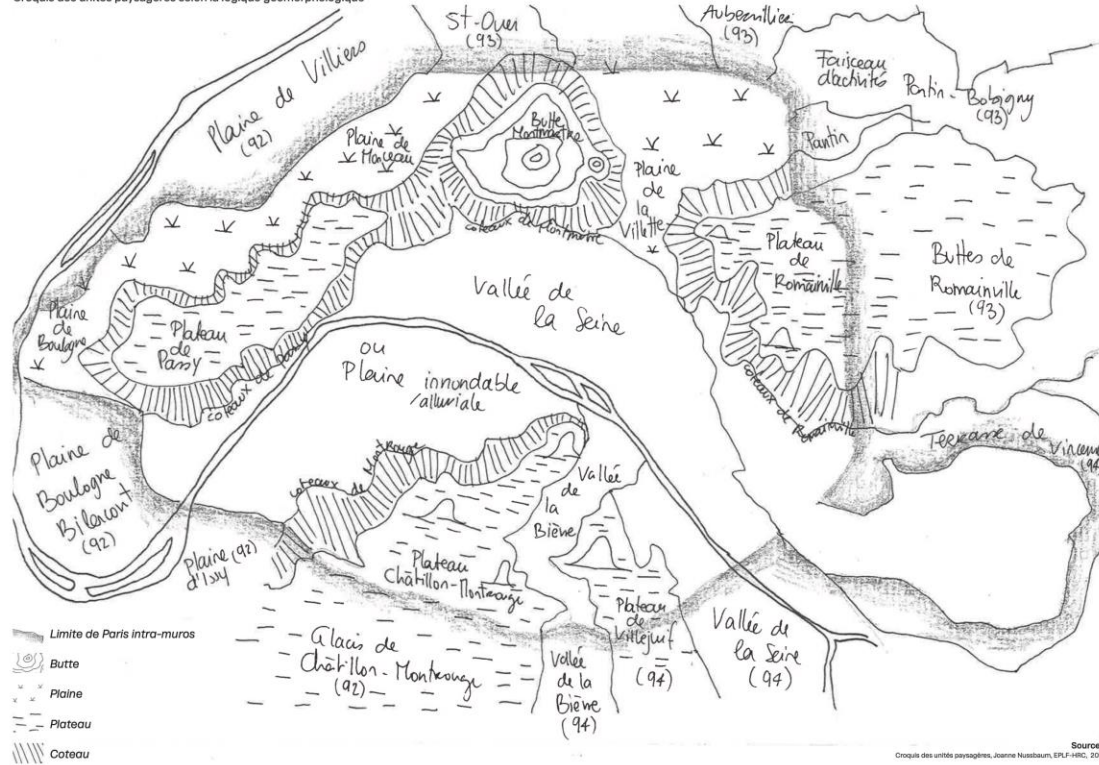
- 1) Pont Aval;
- 2) Pont de Garigliano;
- 3) Pont Mirabeau;
- 4) Pont de Grenelle;
- 5) Pont Rouelle;
- 6) Pont de Bir-Hakeim;
- 7) Pont d'Iéna;
- 8) Passerelle Debilly;
- 9) Pont de l'Alma;
- 10) Pont des Invalides;
- 11) Pont Alexandre-III;
- 12) Pont de la Concorde;
- 13) Passerelle Léopold-Sédar-Senghor;
- 14) Pont-Royal;
- 15) Pont du Carrousel;
- 16) Pont des Arts;
- 17) Pont-Neuf;
- 18) Pont-au-Change;
- 19) Pont St-Michael;
- 20) Pont Notre-Dame;
- 21) Petit-Pont;
- 22) Pont d'Arcole;
- 23) Pont-au-Double;
- 24) Pont Louis-Philippe;
- 25) Pont St-Louis;
- 26) Pont de l'Archevêché;
- 27) Pont Marie;
- 28) Pont de la Tournelle;
- 29) Ponts de Sully;
- 30) Pont Morland;
- 31) Pont d'Austerlitz;
- 32) Viaduc d'Austerlitz;
- 33) Pont Charles-de-Gaulle;
- 34) Pont de Bercy;
- 35) Passerelle Simone-de-Beauvoir;
- 36) Pont de Tolbiac;
- 37) Pont National;
- 38) Pont du Boulevard Périphérique.

The 39 bridges of Paris. The Atlas of landscape, HRC 2023

An Atlas and its issues

The landscape unities and challenges

Croquis des unités paysagères selon la logique géomorphologique



Sources: Croquis des unités paysagères, Joanne Nussbaum, EPLF-HRC, 2023

The map of landscape unities illustrates the different landscapes that make up the city of Paris, representing specific characteristics such as topography, hydrology and geography, as well as the different uses of these spaces in terms of vegetation cover or the development of human activities. Each landscape unities is delimited and categorized within a perimeter, according to its geomorphological characteristics and differences from the surrounding units. In this way, landscape unities and their juxtaposition with landscape structures and landscape entities enable us to refine our understanding of the city of Paris and its relationship with the rest of France.

The landscape unities map of Paris. The Atlas of landscape, HRC 2023

Theoretical frame, context & hypothesis

The Atlas of Landscape of Paris

Exhibition in the Pavillion de l'Arsenal in Paris

The themes

Paris Imaginaires

Paris Sort/Métabolique

Paris Change

Paris Vivant

An Atlas and its issues

The Landscape structures and challenges

The Landscape entities

The Landscape elements

The Landscape unities

Teaching methods and program

Teaching Methods

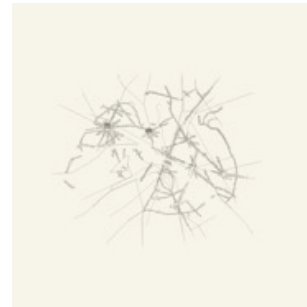
Mapping the landscape structures, entities and elements transcribe the transition of the landscapes of Paris and **weave relationships between points of view**; opening up dialogues between different experiences of places that may belong to different temporalities, past or contemporary eras. A **“storytelling space”**, as Jean-Marc Besse puts it, where plural approaches and viewpoints can be deployed to tell the story of the **“richness and variety of Paris’s urban fabric”** (Paola Lucan, ADP, 2023).



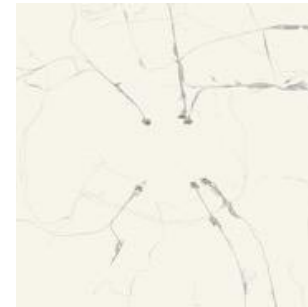
1. Topographie
Source: IGN



2. La Seine
Sources: opendata.apur.org,
métadonnée,
PLAN EAU, fichier .shp



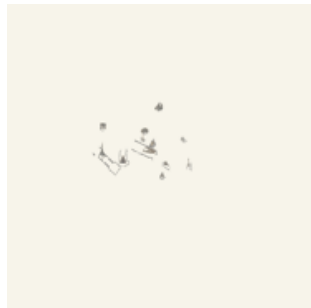
3. Axes persistants
et Boulevards
Sources: Epoque de formation
des voies, Michel Huard 2012



4. Gares et réseau ferroviaire
Sources: opendata.paris.fr,
métadonnées, Plan de voirie -
Emprises Ferroviaires, fichier .shp



5. Le périphérique
Sources: opendata.paris.fr,
métadonnée, Plan de voirie –
Aires mixtes véhicules et
piétons, fichier .shp



6. Les monuments
Sources: Nouveau plan de Paris
Monumental, L.GUILMIN



A. Villages
Sources: opendata.paris.fr,
métadonnée, Volume bâti
Paris, fichier PDF



B. Bois
Sources: environs de paris
levés géométriquement, jean
delagrive, 1740

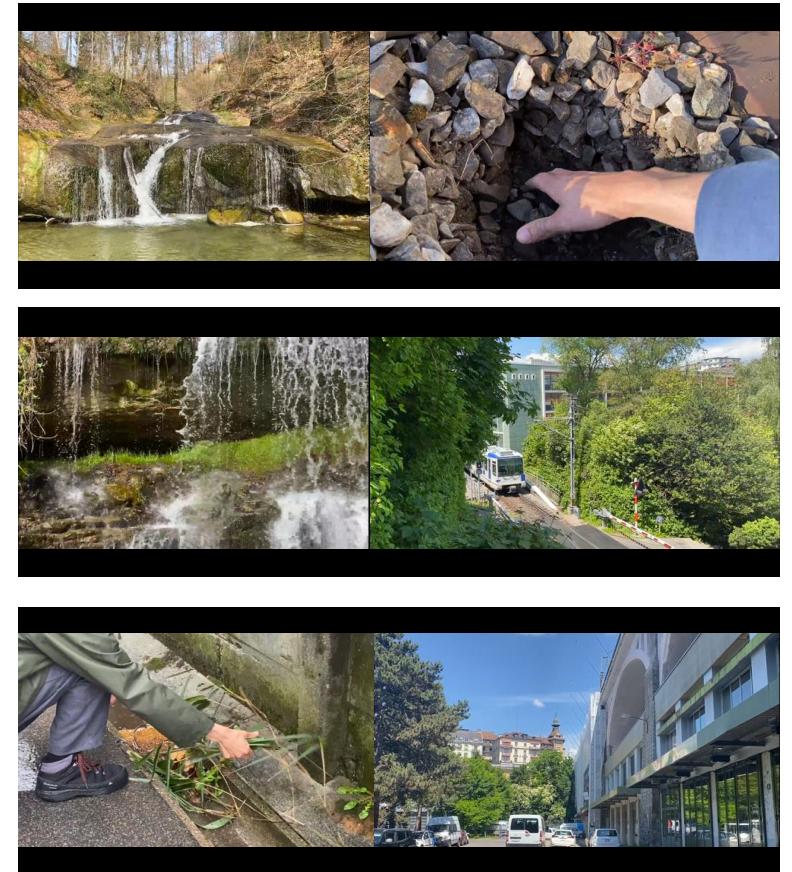
Design tools

Design as a descriptive tool

On site, mapping, videos, ...



Du Sol et du Travail. Habitat Research Center - Lab-U, 2020. With students Design studios MA1-2_2018-2019, prof. P. Viganò

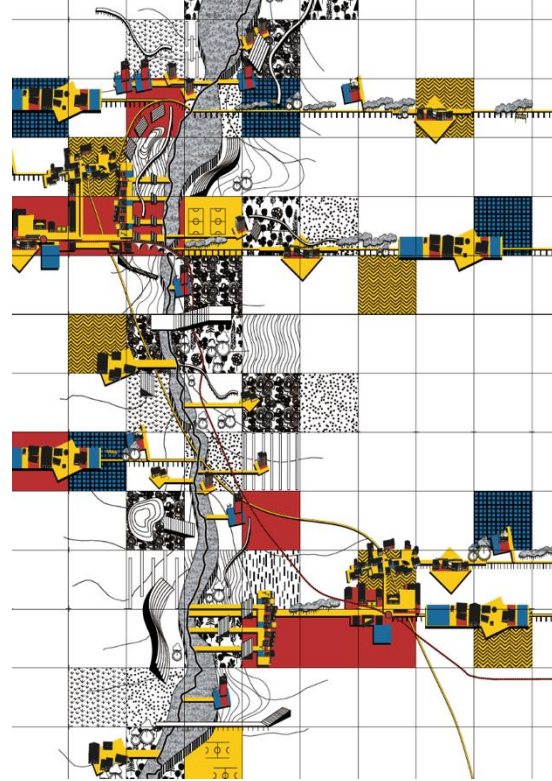
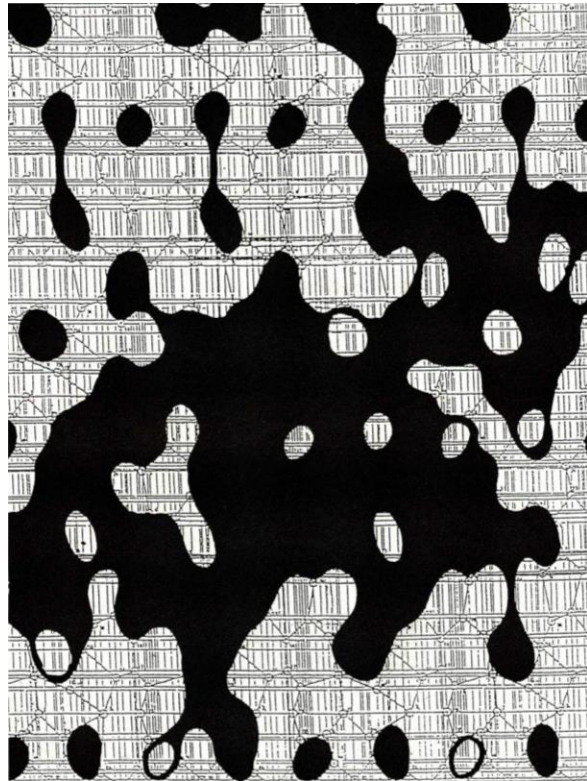


Design Studio BA6_2021, EPFL, Prof. P. Viganò, S. Nguyen, E. Calafati. Students: F. Reichel, Hanna Lindenberg

Design tools

Design as a conceptual tool

Conceptualization, Diagrams, Figures



Exploring space of abstraction in which to reformulates all of pre-existing thinking and imagining in relation to the territories of the contemporary.

Process of design as elaboration of new (spatial) concepts whilst also making use of concepts from other fields, re-interpreting them.

Cesare Leonardi, *Struttura Reticolare Acentrata*, 1988. PDM EPFL 2019, Noélie Lecoanet. Prof. Paola Viganò, maître EPFL Tommaso Pietropoli. Yves Zurstrassen, *Dance*, 2017 (detail), *Summertime*, 2016 (detail).

Design tools

Design as description of future situations and future challenges

Scenarios, Prototypes



©Simon Cerf-Carpentier



Field of practice for the implementation and evaluation of hypothesis.

Eco-socio-spatial proposals for action developed through a continuous exchange with situations and themes.

Credits Images : Simon Cerf-Carpentier, Serge Ecker, Lexigon Apur.

The Program

Rencontres / On site



Atelier / Mini-workshops



Critics / Readings / Public debates



Events

20 Sept. 2022

Seminar: Les enjeux du Paysages de Paris
Jean-Marc Besse, Pieter Uyttenhove/ Habitat
Research Center

06-8 October. 2023

Voyage d'étudiants à Paris
Les Promenades de Paysages

09 October. 2023

Seminar: Les Paysages de Paris
Chiara Santini, Pieter Uyttenhove/ Habitat
Research Center

1. Visite et conférence à l'ENSA Paris Malaquais
2. Promenade sur les quais de Seine
3. Visite du quartier Latin
4. Traversée de la Seine en péniche, Péniche Alternat
5. « Café littérature », place de la Bastille
6. Promenade le long de la coulée verte
7. Dans le métro
8. Promenade sur l'île aux Cygnes

