



Laboratory of Construction and Architecture

Riccardo VANNUCCI

FAR FROM HOME - ARCHITECTS FROM THE BORDER







FAR Laboratory of Construction and Architecture

Design studio BA5-MA1

2024-2025

FAR from home - Architects from the border

A MATTER OF GENDER

Women's Centre in Wau, South Sudan

Riccardo VANNUCCI

Google Earth 17.08.2023



Image © 2023 Airbus

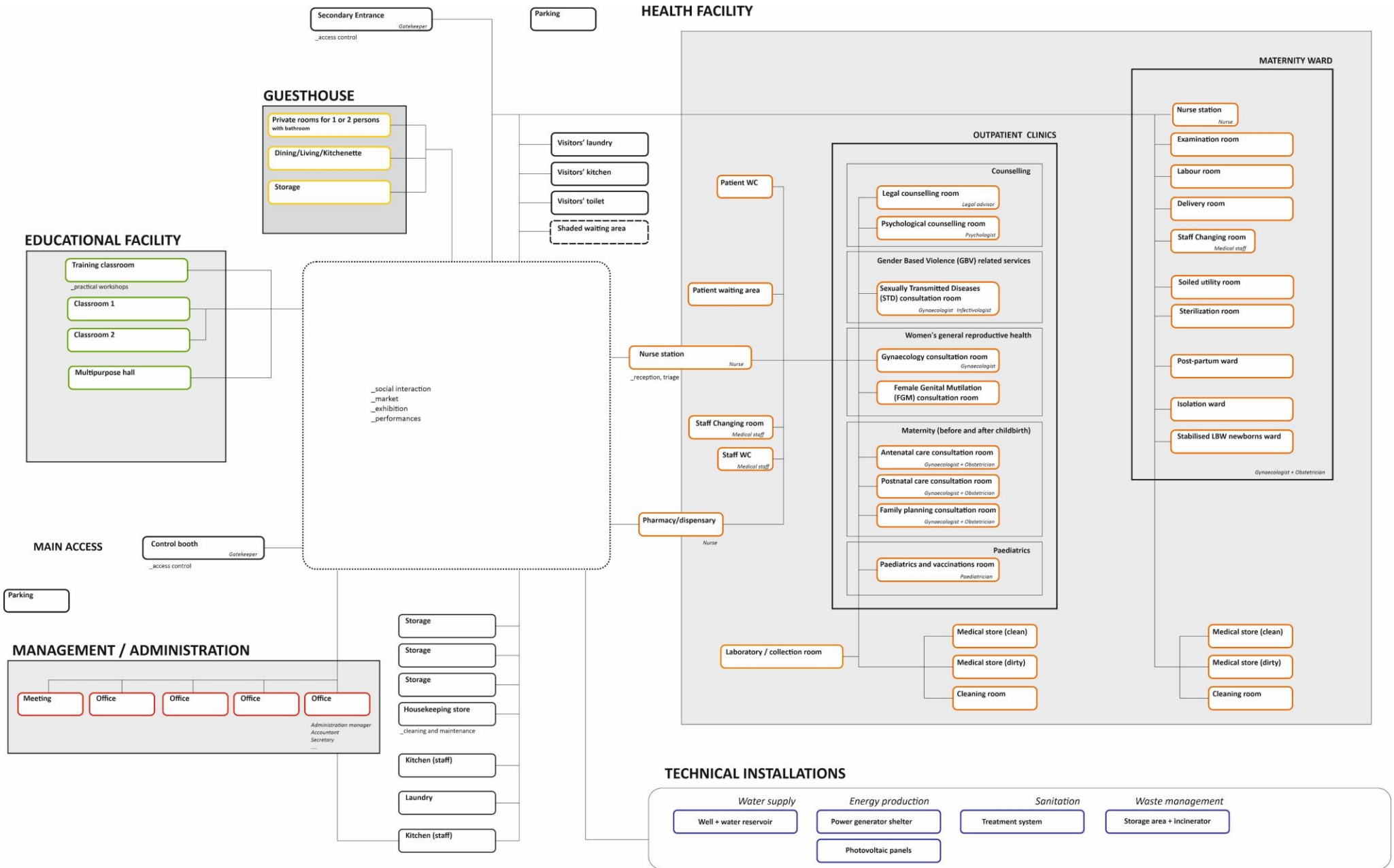
113 m

Google Earth

1985

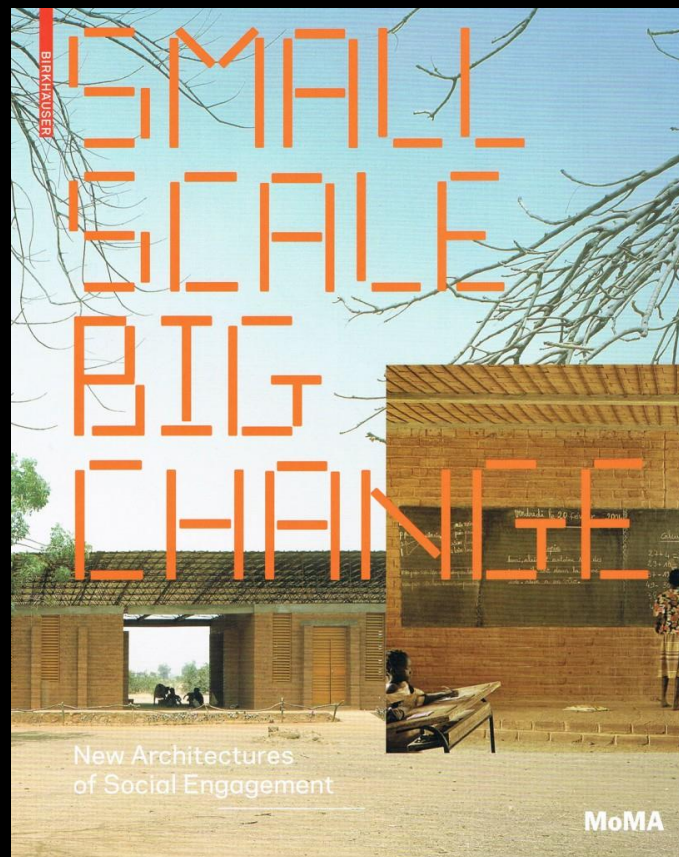
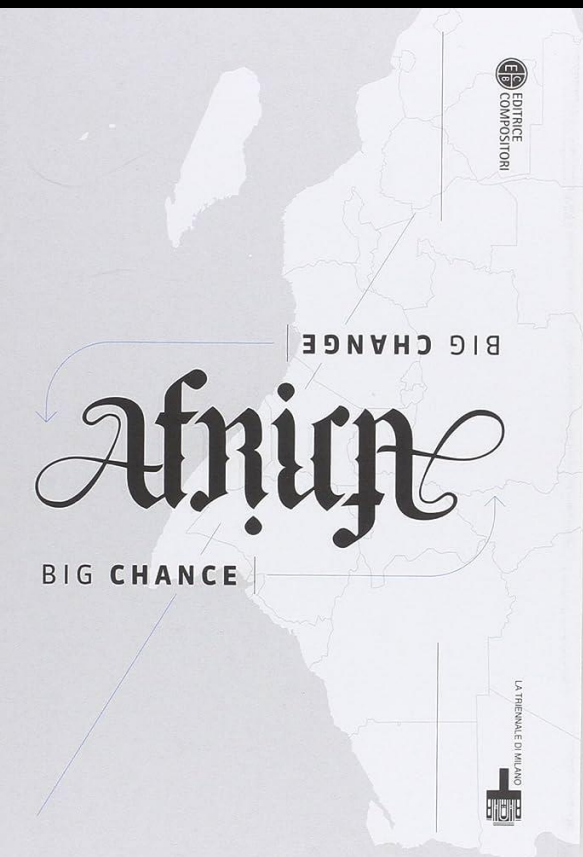
Imagery Date: 4/20/2023 7°41'43.43" N 27°58'32.56" E elev 0 m eye alt 488 m

2035



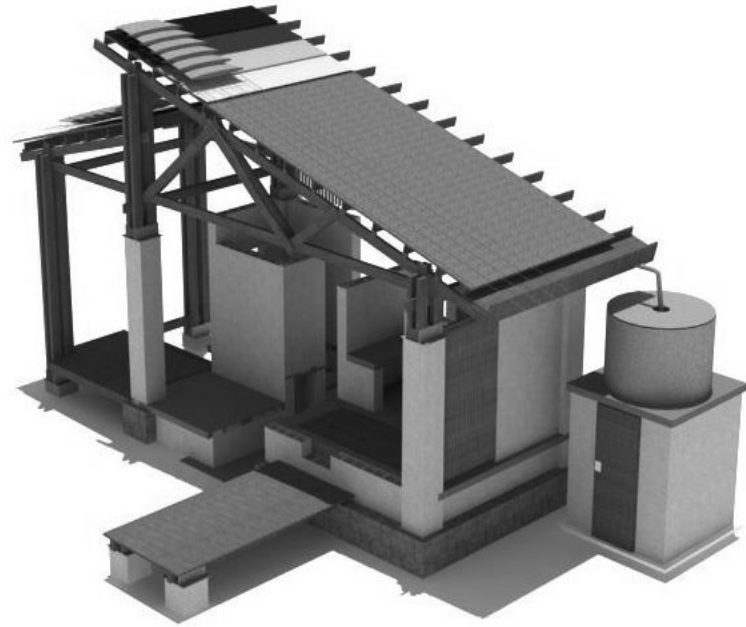


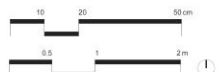
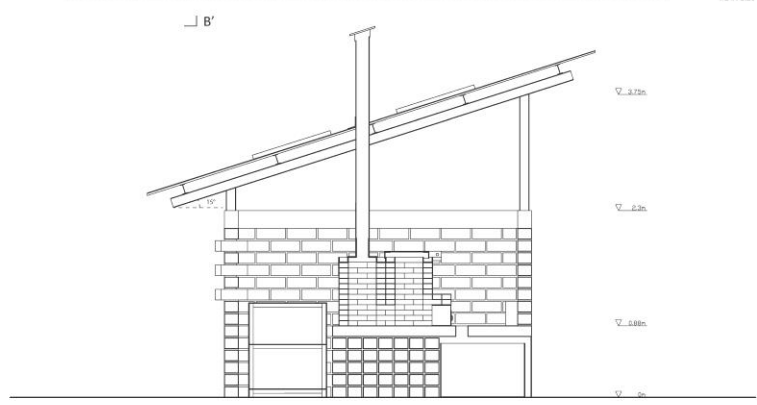
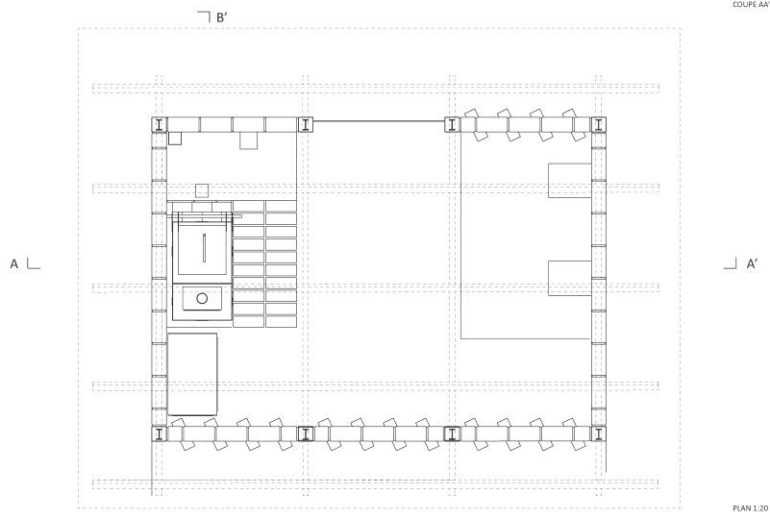
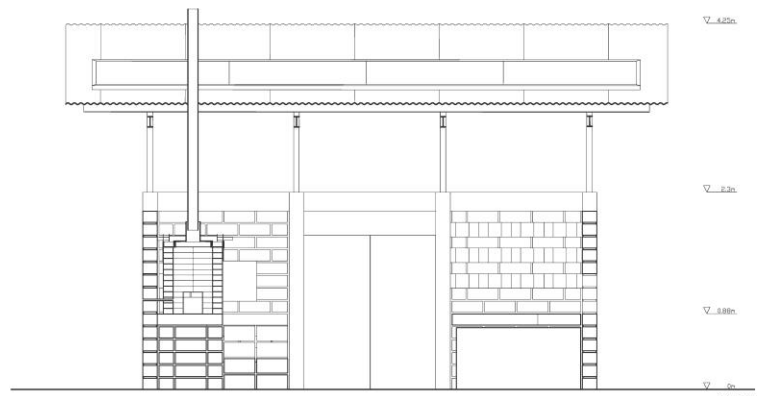
Hollmén Reuter Sandman, Women's Centre, Rufisque, Senegal, 2001





Diébédo Francis Kéré, Primary School, Gando, Burkina Faso, 1999-2001

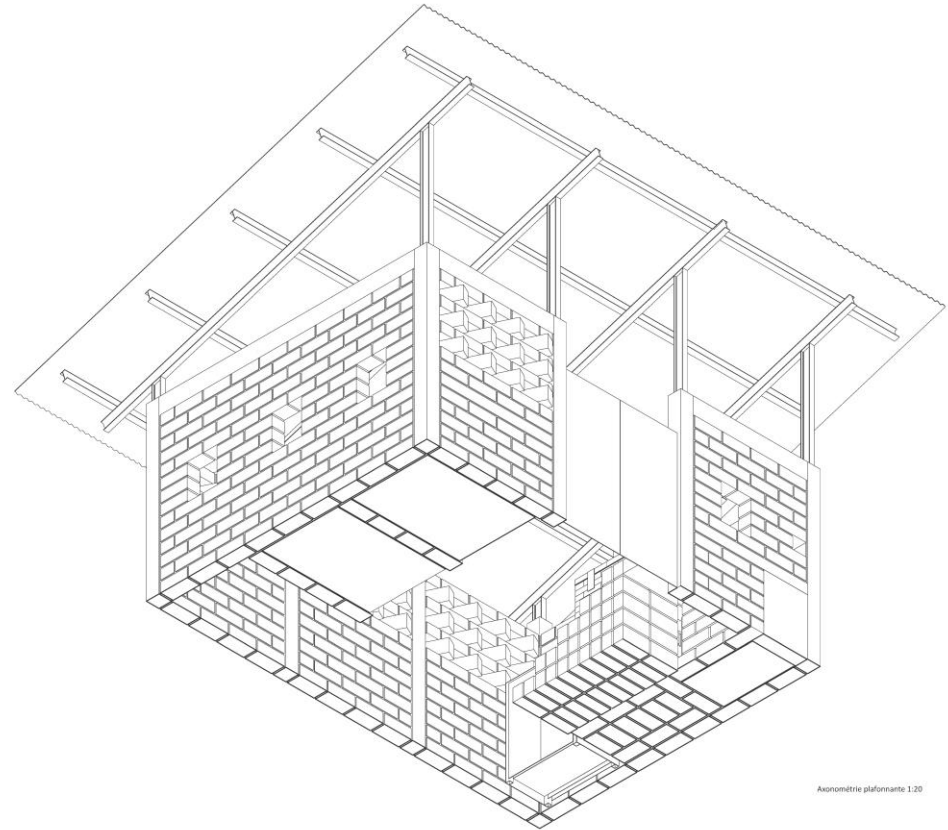




1:5, 1:20 / A1

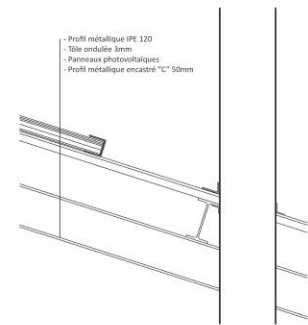
TACHE 02
CENTRE DE TRI ET INCINERATEUR

2019.10.14 Kimberlyne NGUYEN

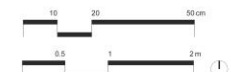


Materiaux	Dimensions		m2	m3	masse volum	masse (kg)	
Brique en laterite	36 x 17 x 13 cm	2300 unités		18.2988	2150	39342.42	
Brique refractaire	23 x 11.5 x 6.5 cm	300 unités		0.515775	2100	1083.1275	
Béton		3.144 m3			1.14	1100	1254
Mortier		0.81 m3			0.35	1100	385
Tôle ondulée	3mm	40.46 m2		0.12138	7800	946.764	
Profilé en C		24.34 m	0.00042857	0.0104313	7800	81.3641122	
Profilé IPE 120		77.6 m	0.00132102	0.10251131	7800	799.588196	
Tôle 3mm		30.54 m2		0.09162	7800	714.636	
Tuyau acier	diam 120mm x 3mm	3 m	0.00079341	0.00238024	7800	18.5658642	
Poids total						44625.4657	

Tableau matériaux et charges



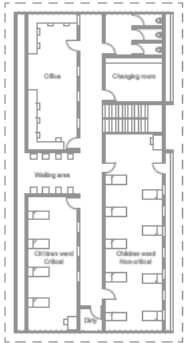
Détail toiture jonctions 1:5



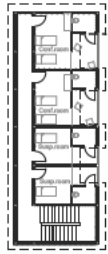
1:5, 1:20 / A1

TACHE 02
CENTRE DE TRI ET INCINERATEUR

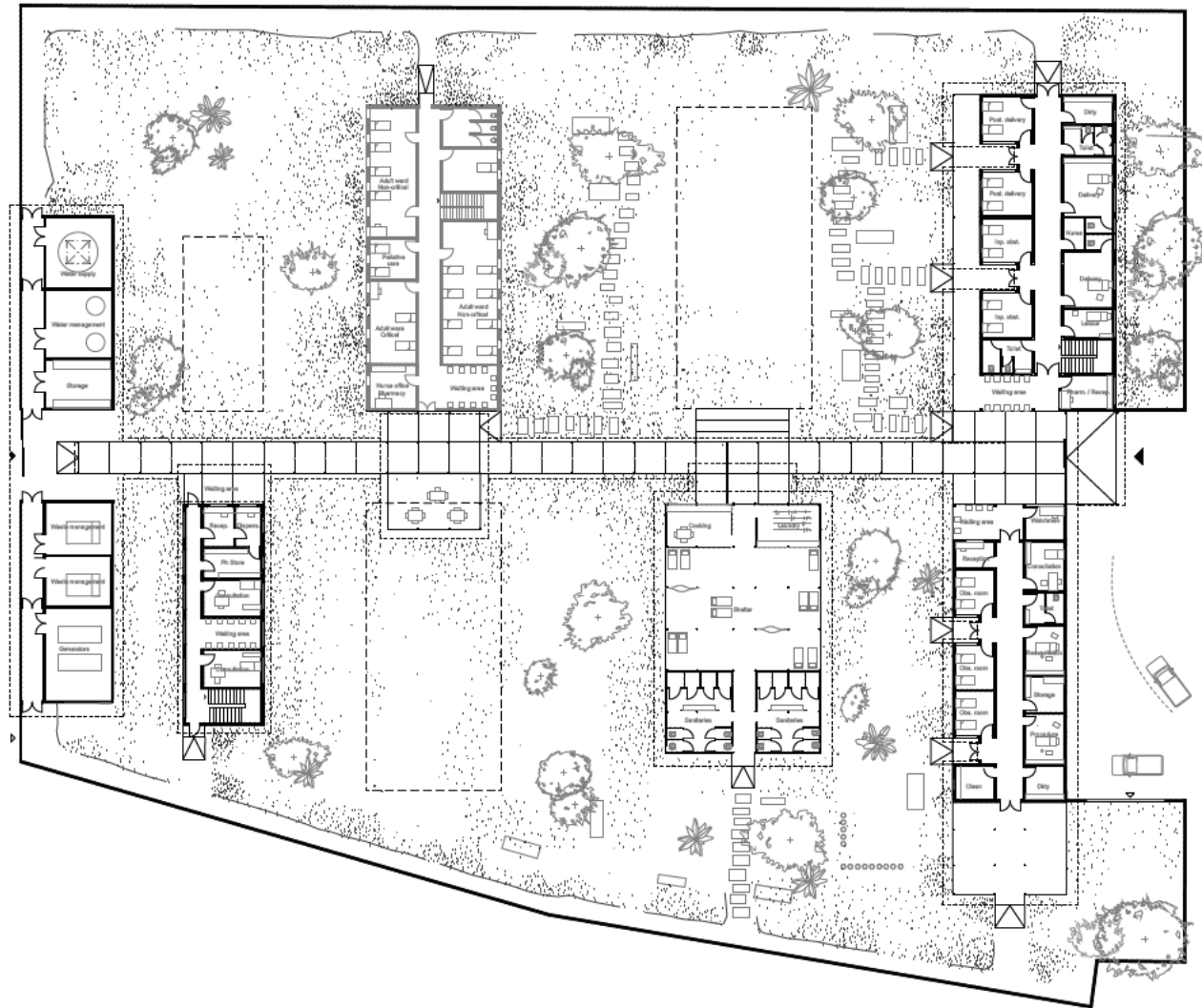
2019.10.14 Kimberlyne NGUYEN



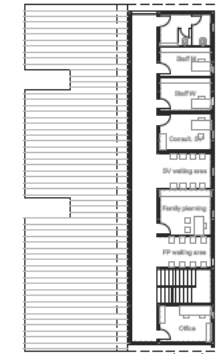
Stage plan - Impatient - 1:250



Stage plan - TB - 1:250

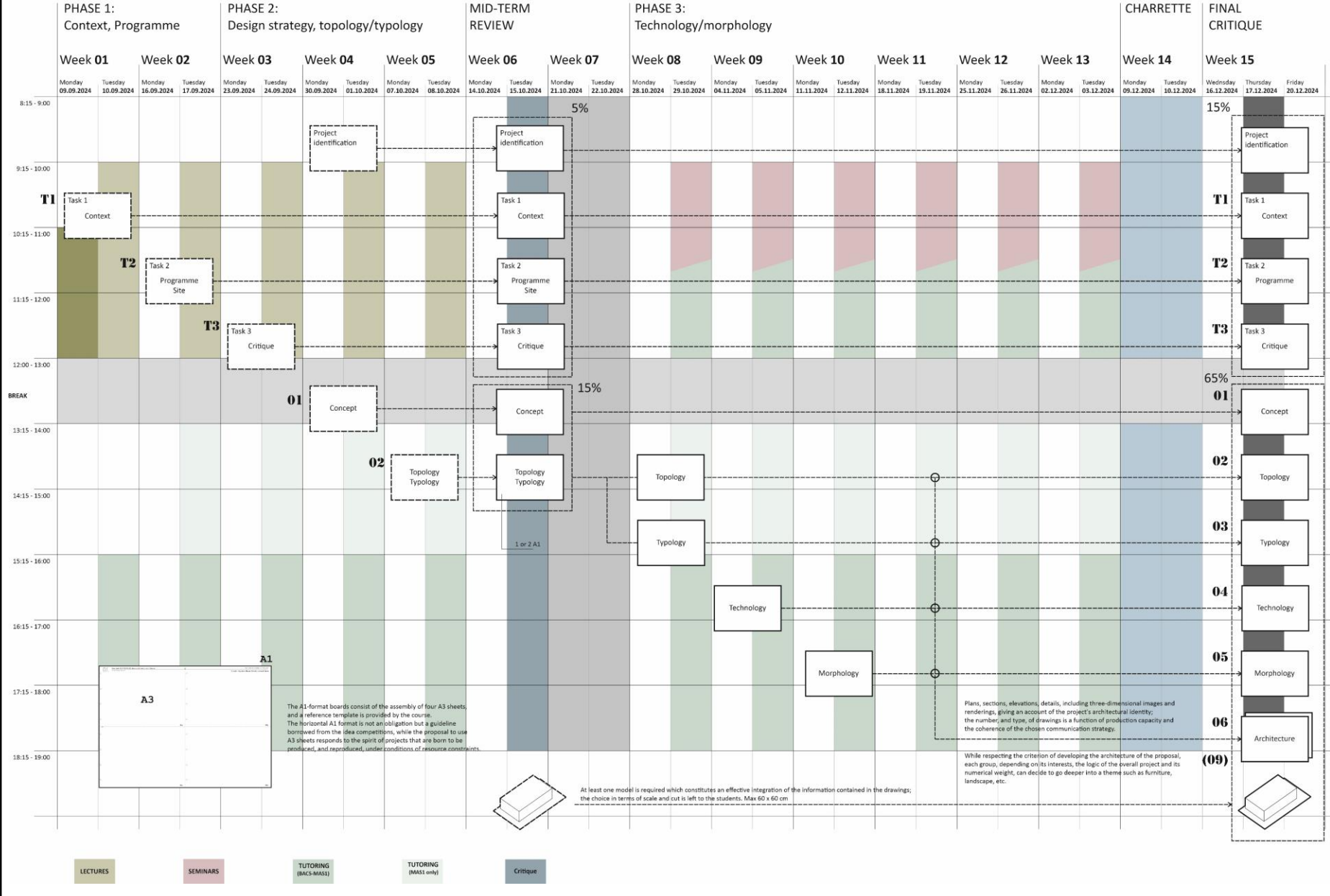


Floor plan - 1:250



Stage - Maternity - 1:250

FALL SEMESTER





FAR Laboratory of Construction and Architecture

Design studio BA6-MA2

2024-2025

FAR from home - Architects from the border

WARGAMES


Early Childhood Development Centre in Zaatari Refugee Camp, Jordan

Riccardo VANNUCCI






UNHCR
The UN Refugee Agency

 **UNHCR**
The UN Refugee Agency


الوكالة
لللاجئين
والمغتربين

 **UNHCR**
The UN Refugee Agency

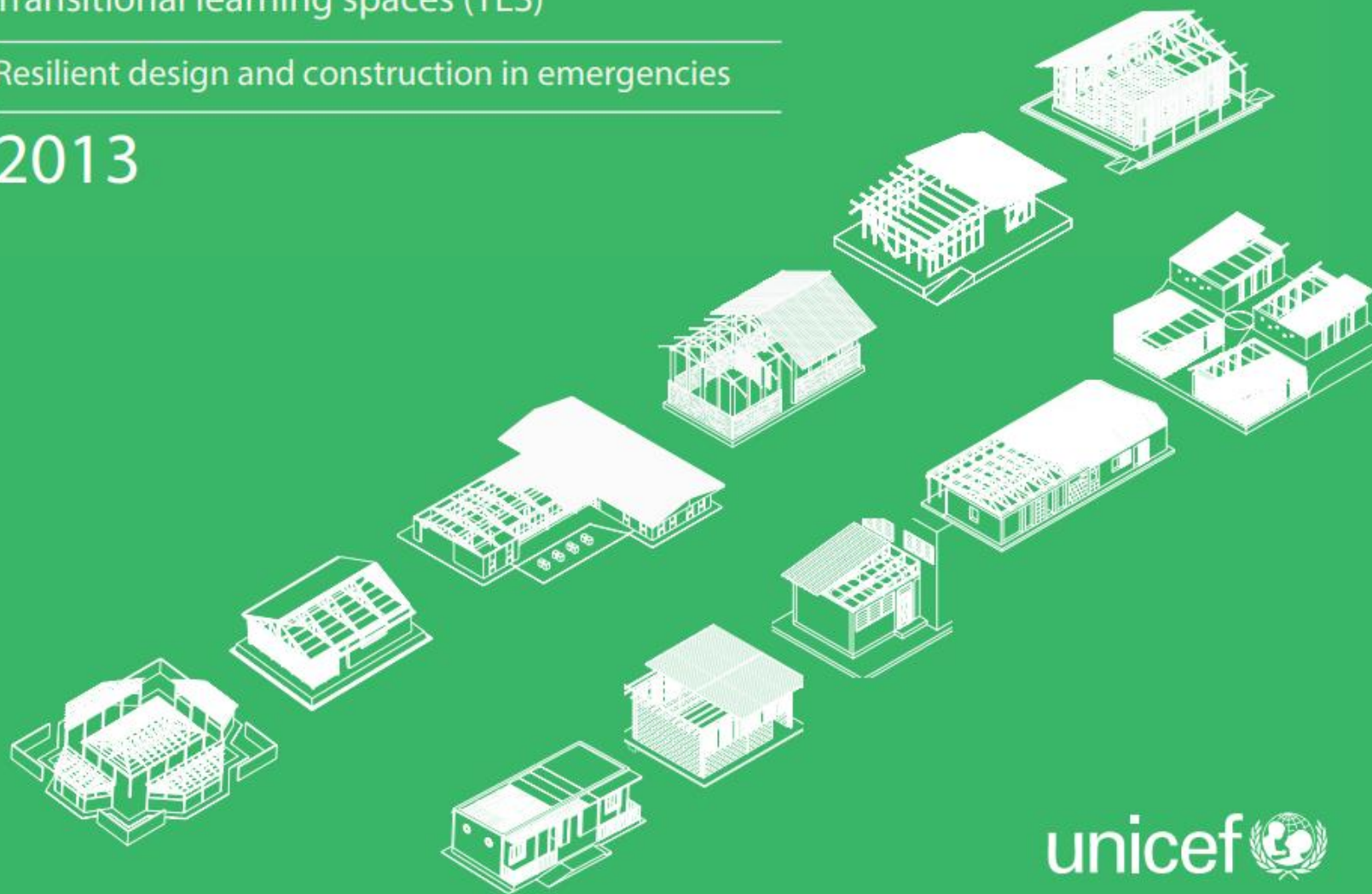


Compendium

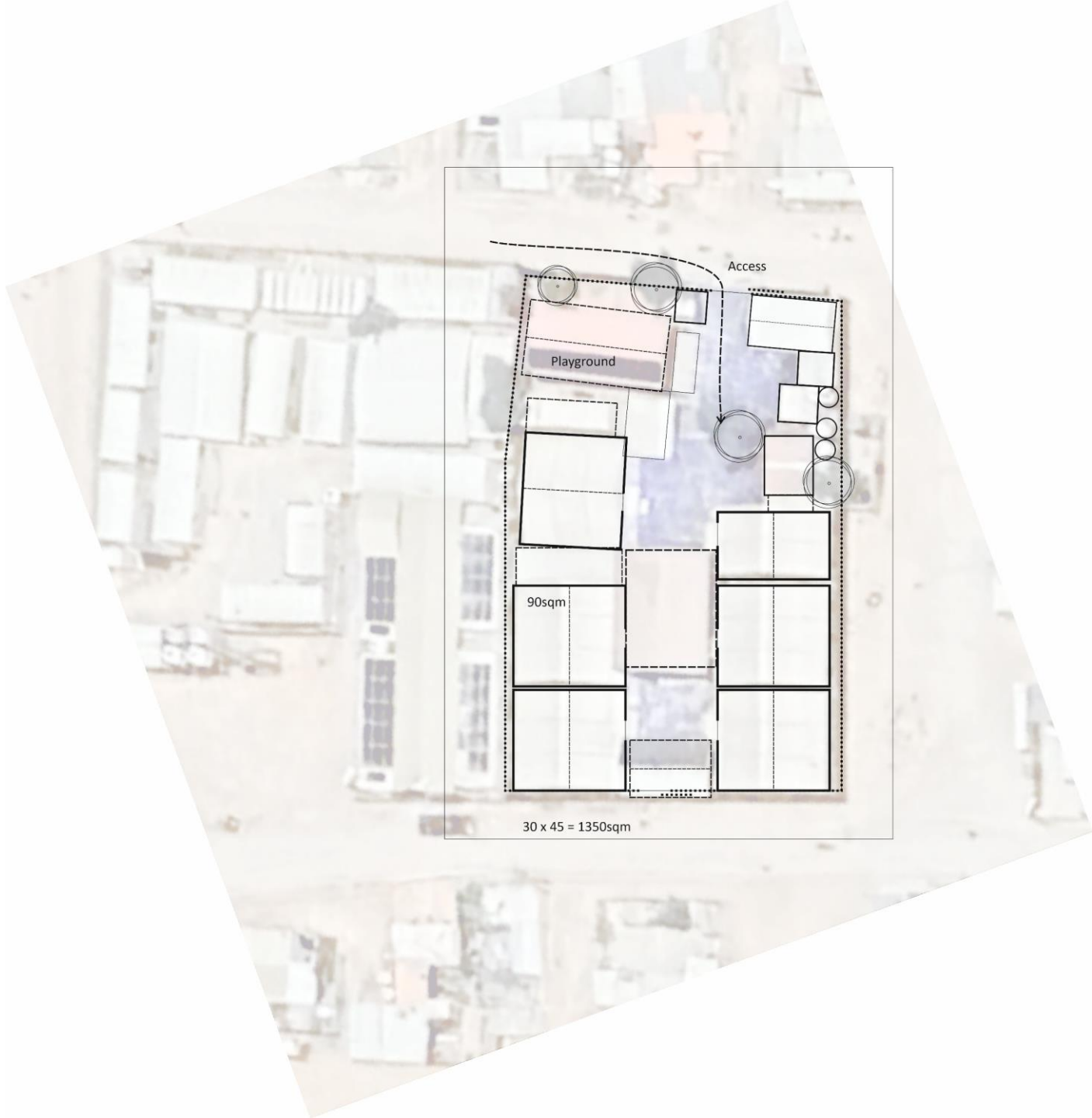
Transitional learning spaces (TLS)

Resilient design and construction in emergencies

2013



unicef 



Access

Playground

90sqm

30 x 45 = 1350sqm



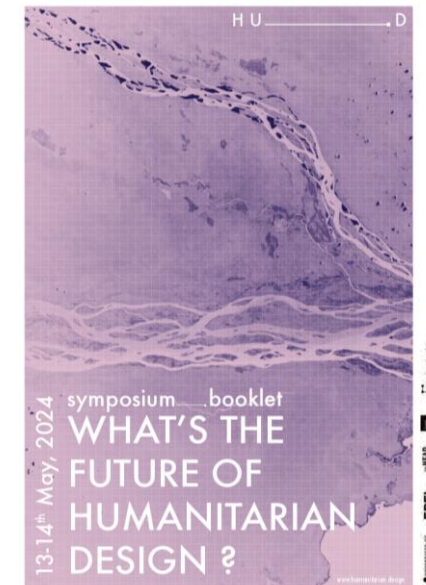
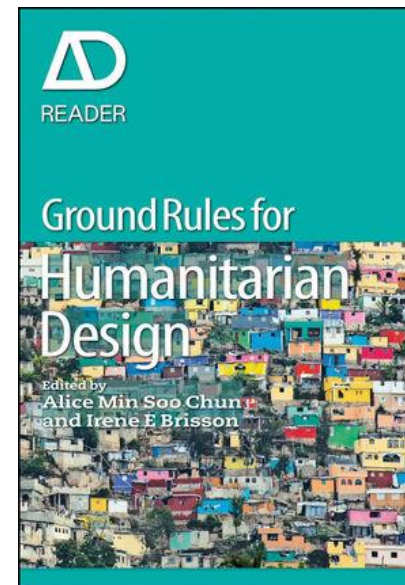
Save the Children
Rainbow Early Childhood Development Centre
Zaatari Refugee Camp, Jordan, 2017



Better Shelter by IKEA, 2013



Shigeru Ban, Temporary 'paper log house', Philippines, 2013





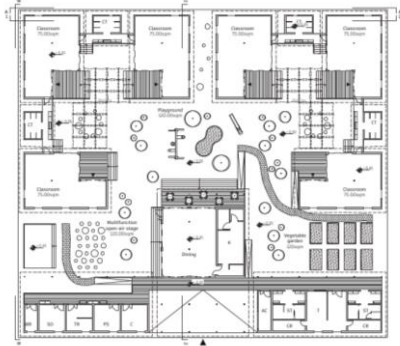
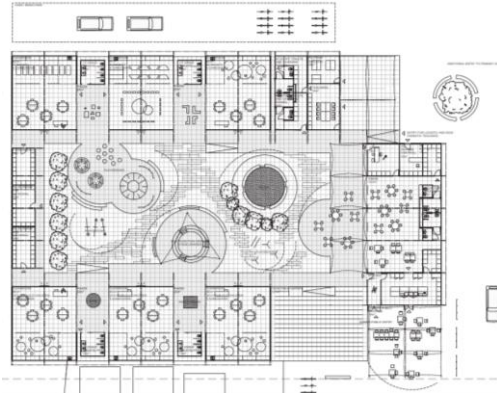
Emergency Architecture & Human Rights (EAHR)
Za'atari Classroom
Zaatari Refugee Camp, Jordan, 2017



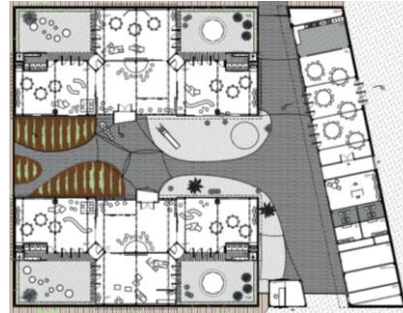
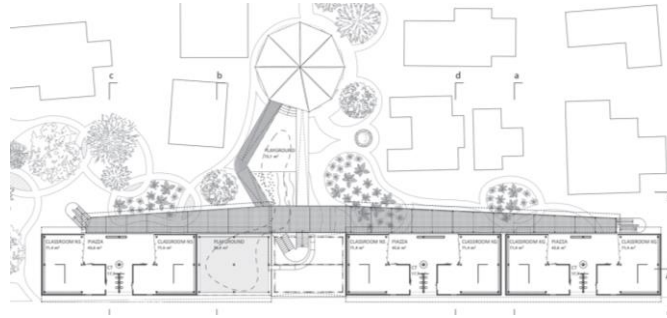
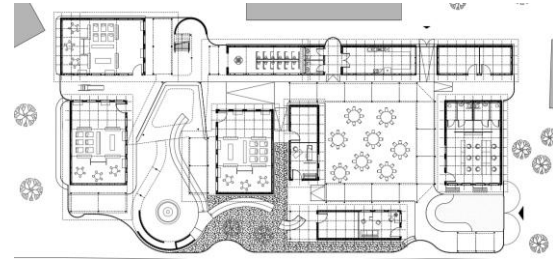
Cameron Sinclair and Pouya Khazaeli for Relief International
Schools for Refugee Children
Za'atari Refugee Camp, Jordan, 2015



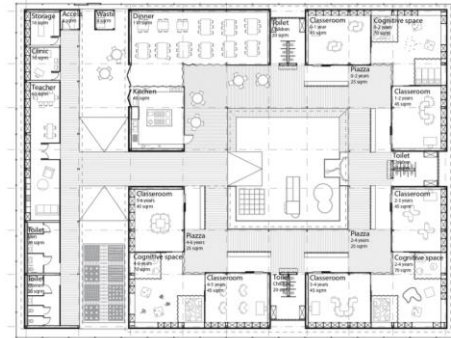
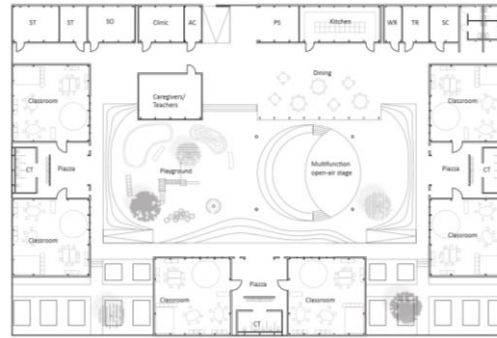
Zaha Hadid Architects & Education Above All
Tents for education, shelter, clinics
Turkey, Pakistan, Yemen, Syria 2015-....



GROUND FLOOR PLAN 1 128



Site plan 128





Thank you

for any information: riccardo.vannucci@epfl.ch